

# Ultra-Reliable Low Pass Filter

## VLP-16

50Ω DC to 1350 MHz



### Maximum Ratings

Operating Temperature	-55°C to 100°C
Storage Temperature	-55°C to 100°C
RF Power Input*	15W max. at 25°C

\* Passband rating, derate linearly to 0.4xPmax at 100°C ambient. Permanent damage may occur if any of these limits are exceeded.

### Features

- rugged unibody construction
- low insertion loss passband, less than 1 dB typ.
- excellent power handling, 15W
- low cost

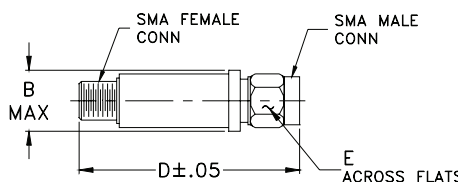
### Applications

- harmonic rejection
- transmitters/receivers
- lab use

CASE STYLE: FF704

Connectors	Model	Price	Qty.
SMA	VLP-16	\$24.95 ea.	(1-9)

### Outline Drawing



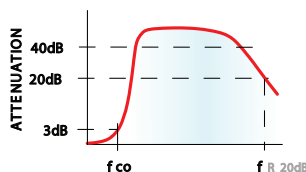
### Outline Dimensions (inch/mm)

B	D	E	wt
.410	1.43	.312	grams
10.41	36.32	7.92	10.0

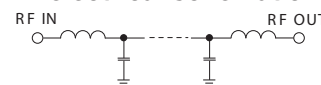
### Electrical Specifications (T<sub>AMB</sub>=25°C)

PASSBAND (MHz) (loss < 1 dB)	f <sub>co</sub> , MHz Nom. (loss 3 dB)	STOP BAND (MHz)			VSWR (:1) Passband Typ.
		(loss > 20 dB)	(loss > 40 dB)	fr20 dB Typ.	
DC-1350	1550	2100	2700-4000	7000	1.1

### typical frequency response

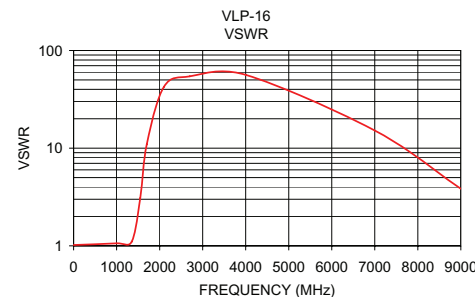


### electrical schematic



### Typical Performance Data

Frequency (MHz)	Insertion Loss (dB)	VSWR (:1)
1.00	0.06	1.02
1000.00	0.57	1.06
1350.00	0.89	1.10
1550.00	3.01	3.08
1700.00	8.83	10.93
2100.00	24.47	42.44
2700.00	45.40	54.42
4000.00	43.77	56.34
7000.00	22.60	15.17
9000.00	20.52	3.84



**Mini-Circuits®**  
ISO 9001 ISO 14001 AS 9100 CERTIFIED

**minicircuits.com**

P.O. Box 350166, Brooklyn, New York 11235-0003 (718) 934-4500 Fax (718) 332-4661 For detailed performance specs & shopping online see Mini-Circuits web site

**PEP** The Design Engineers Search Engine Provides ACTUAL Data Instantly From MINI-CIRCUITS At: [www.minicircuits.com](http://www.minicircuits.com)

IF/RF MICROWAVE COMPONENTS

REV. A  
M85674  
VLP-16  
ED-10545B/1  
WZ/AD/CP  
070301