

# Ultra-Reliable Low Pass Filter

## VLP-11

50Ω DC to 850 MHz



### Maximum Ratings

Operating Temperature	-55°C to 100°C
Storage Temperature	-55°C to 100°C
RF Power Input*	16W max. at 25°C

\* Passband rating, derate linearly to 0.4xPmax at 100°C ambient. Permanent damage may occur if any of these limits are exceeded.

### Features

- rugged unibody construction
- low insertion loss passband, less than 1 dB typ.
- excellent power handling, 16W
- low cost

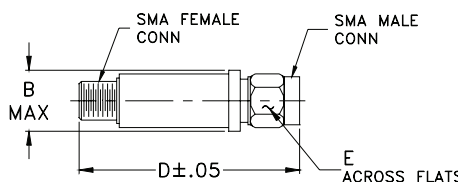
### Applications

- harmonic rejection
- transmitters/receivers
- lab use

CASE STYLE: FF704

Connectors	Model	Price	Qty.
SMA	VLP-11	\$24.95 ea.	(1-9)

### Outline Drawing



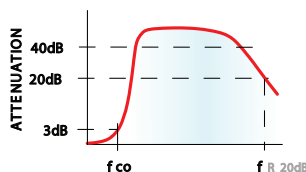
### Outline Dimensions (inch/mm)

B	D	E	wt
.410	1.43	.312	grams
10.41	36.32	7.92	10.0

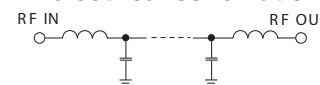
### Electrical Specifications (T<sub>AMB</sub>=25°C)

PASSBAND (MHz) (loss < 1 dB)	f <sub>co</sub> , MHz Nom. (loss 3 dB)	STOP BAND (MHz)			VSWR (:1) Passband
		(loss > 20 dB)	(loss > 40 dB)	fr20 dB Typ.	
Typ.	Typ.	1500	2000-3500	5500	Typ.
DC-850	1078				1.2

### typical frequency response

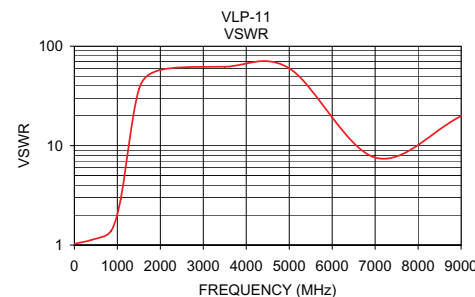


### electrical schematic



### Typical Performance Data

Frequency (MHz)	Insertion Loss (dB)	VSWR (:1)
1.00	0.10	1.03
400.00	0.42	1.13
850.00	0.93	1.38
1078.00	3.07	2.91
1500.00	25.53	36.68
2000.00	46.14	57.67
3500.00	43.58	62.18
5000.00	32.07	59.99
7000.00	18.86	7.58
9000.00	21.82	19.83



**Mini-Circuits®**  
ISO 9001 ISO 14001 AS 9100 CERTIFIED

**minicircuits.com**

P.O. Box 350166, Brooklyn, New York 11235-0003 (718) 934-4500 Fax (718) 332-4661 For detailed performance specs & shopping online see Mini-Circuits web site

**PDZ** The Design Engineers Search Engine Provides ACTUAL Data Instantly From MINI-CIRCUITS At: [www.minicircuits.com](http://www.minicircuits.com)

IF/RF MICROWAVE COMPONENTS

REV. A  
M85674  
VLP-11  
ED-10545B/3  
WZ/AD/CP  
070301