

Low Pass Filter

VLFX-950

50Ω DC to 950 MHz (40 dB Isolation up to 20 GHz)

Maximum Ratings

Operating Temperature -55°C to 100°C

Storage Temperature -55°C to 100°C

RF Power Input* 10W max. at 25°C

*Passband rating, derate linearly to 3.5W at 100°C ambient.

Features

- very good isolation, 40 dB up to 20 GHz
- 21 sections
- excellent power handling, 10W
- temperature stable LTCC internal structure
- re-entry frequency > 20 GHz
- rugged unibody construction
- protected by US patent 6,943,646

Applications

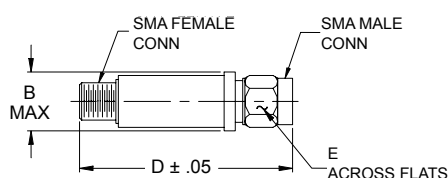
- harmonic rejection
- transmitters/receivers
- lab use
- test instrumentation



CASE STYLE: FF1118

Connectors	Model	Price	Qty.
SMA	VLFX-950	\$39.95 ea.	(1-9)

Outline Drawing



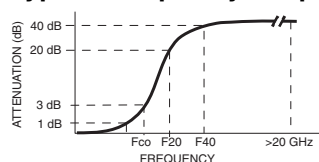
Outline Dimensions (inch/mm)

B	D	E	wt.
.410	2.67	.312	grams
10.41	67.82	7.92	17.0

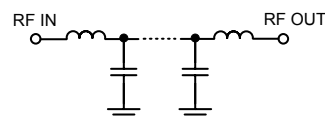
Low Pass Filter Electrical Specifications @ 25°C

MODEL NO.	PASSBAND (MHz) (Loss < 1.2dB) Max.	Fco, MHz Nom (Loss 3 dB) Typ	STOPBAND (MHz) (Loss, dB)		VSWR (:1)		NO. OF SECTIONS
			F20 Min.	F40 Typ.	Stopband Typ.	Passband Typ.	
VLFX-950	DC-950	1400	1750	2250-20000	10	1.3	21

Typical Frequency Response

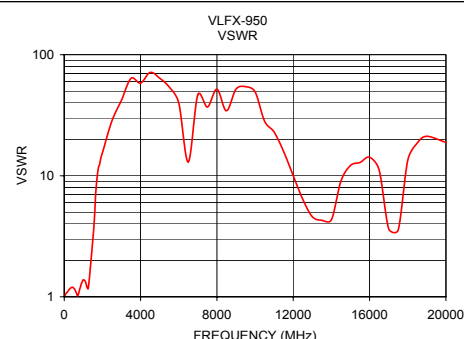
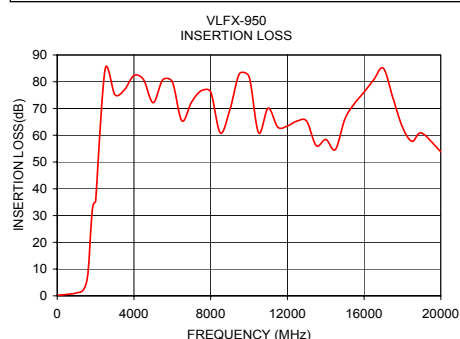


Functional Schematic



Typical Performance Data @ 25°C

Frequency (MHz)	Insertion Loss (dB)	VSWR (:1)
50	0.27	1.03
300	0.42	1.17
600	0.60	1.11
950	1.02	1.34
1100	1.21	1.34
1275	1.67	1.23
1400	2.68	1.99
1550	5.78	3.72
1650	12.61	7.15
1750	24.55	10.59
2250	60.02	21.95
4000	82.32	58.20
6000	79.95	39.93
8000	76.22	51.88
10000	81.90	49.29
12000	63.46	10.03
14000	58.41	4.32
16000	76.13	14.24
18000	63.01	13.40
20000	53.82	18.85



Mini-Circuits®
ISO 9001 ISO 14001 CERTIFIED

ALL NEW
minicircuits.com

P.O. Box 350166, Brooklyn, New York 11235-0003 (718) 934-4500 Fax (718) 332-4661 For detailed performance specs & shopping online see Mini-Circuits web site



The Design Engineers Search Engine Provides ACTUAL Data Instantly From MINI-CIRCUITS At: www.minicircuits.com

RF/IF MICROWAVE COMPONENTS

REV. A
M97025
VLFX-950
EDU-0399
ED-11930A/13
URJ/RS/CP
080916
Page 1 of 1