

# Low Pass Filter

## VLFX-825

50Ω DC to 825 MHz (40 dB Isolation up to 20 GHz)

### Maximum Ratings

Operating Temperature -55°C to 100°C

Storage Temperature -55°C to 100°C

RF Power Input\* 10W max. at 25°C

\*Passband rating, derate linearly to 3.5W at 100°C ambient.

### Features

- very good isolation, 40 dB up to 20 GHz
- 21 sections
- excellent power handling, 10W
- temperature stable LTCC internal structure
- re-entry frequency > 20 GHz
- rugged unibody construction
- protected by US patent 6,943,646

### Applications

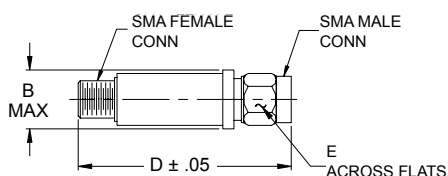
- harmonic rejection
- transmitters/receivers
- lab use
- test instrumentation



CASE STYLE: FF1118

Connectors	Model	Price	Qty.
SMA	VLFX-825	\$39.95 ea.	(1-9)

### Outline Drawing



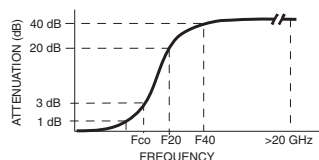
### Outline Dimensions (inch mm)

B	D	E	wt.
.410	2.67	.312	grams
10.41	67.82	7.92	17.0

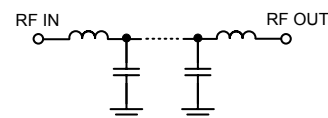
### Low Pass Filter Electrical Specifications @ 25°C

MODEL NO.	PASSBAND (MHz) (Loss < 1.2dB) Max.	fco, MHz Nom (Loss 3 dB) Typ	STOPBAND (MHz) (Loss, dB)		VSWR (:1)		NO. OF SECTIONS
			F20 Min.	F40 Typ.	Stopband Typ.	Passband Typ.	
VLFX-825	DC-825	1275	1550	1850-20000	10	1.20	21

### Typical Frequency Response

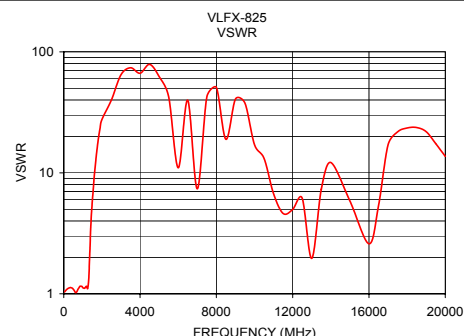
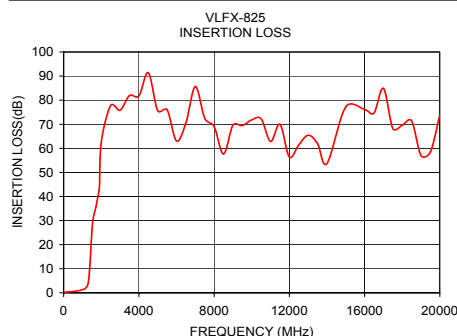


### Functional Schematic



### Typical Performance Data @ 25°C

Frequency (MHz)	Insertion Loss (dB)	VSWR (:1)
50	0.21	1.04
250	0.34	1.11
500	0.56	1.09
825	0.95	1.14
950	1.19	1.15
1100	1.58	1.11
1275	3.33	1.18
1400	11.97	3.20
1550	29.79	7.49
1850	41.44	20.81
2000	62.70	27.62
3000	75.79	64.73
4000	81.73	66.53
5000	75.62	62.40
7500	72.55	42.41
10000	71.84	17.08
12500	61.43	6.17
15000	77.23	5.85
17500	68.24	21.82
20000	73.81	13.68



**Mini-Circuits®**  
ISO 9001 ISO 14001 CERTIFIED

ALL NEW  
minicircuits.com

P.O. Box 350166, Brooklyn, New York 11235-0003 (718) 934-4500 Fax (718) 332-4661 For detailed performance specs & shopping online see Mini-Circuits web site



The Design Engineers Search Engine Provides ACTUAL Data Instantly From MINI-CIRCUITS At: [www.minicircuits.com](http://www.minicircuits.com)

RF/IF MICROWAVE COMPONENTS

REV. A  
M97025  
VLFX-825  
EDU-0399  
ED-11930A/12  
URJ/RS/CP  
080916  
Page 1 of 1