

Low Pass Filter

VLFX-80

50Ω DC to 80 MHz (40 dB Isolation up to 20 GHz)

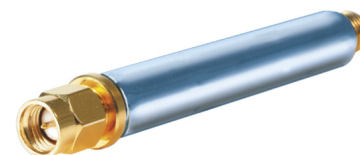
Maximum Ratings

Operating Temperature	-55°C to 100°C
Storage Temperature	-55°C to 100°C
RF Power Input*	10W max. at 25°C

*Passband rating, derate linearly to 3.5W at 100°C ambient.

Features

- very good isolation, 40 dB up to 20 GHz
- 21 sections
- excellent power handling, 10W
- temperature stable LTCC internal structure
- re-entry frequency > 20 GHz
- rugged unibody construction
- protected by US patent 6,943,646



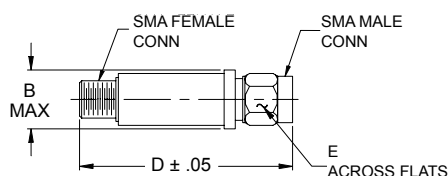
CASE STYLE: FF1118

Connectors	Model	Price	Qty.
SMA	VLFX-80	\$39.95 ea.	(1-9)

Applications

- harmonic rejection
- transmitters/receivers
- lab use
- test instrumentation

Outline Drawing



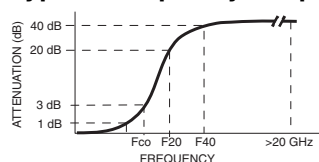
Outline Dimensions (inch mm)

B	D	E	wt.
.410	2.67	.312	grams
10.41	67.82	7.92	17.0

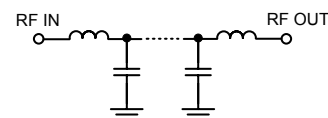
Low Pass Filter Electrical Specifications @ 25°C

MODEL NO.	PASSBAND (MHz) (Loss < 1.2dB) Max.	Fco, MHz Nom (Loss 3 dB) Typ	STOPBAND (MHz) (Loss, dB)		VSWR (:1)		NO. OF SECTIONS
			F20 Min.	F40 Typ.	Stopband Typ.	Passband Typ.	
VLFX-80	DC-80	145	200	220-20000	10	1.2	21

Typical Frequency Response

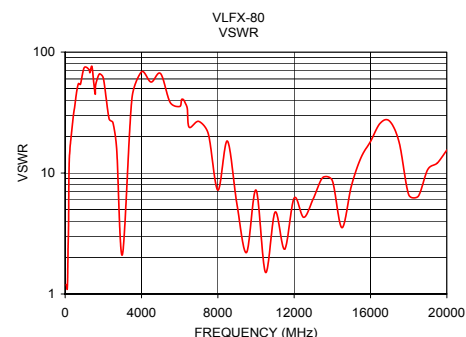
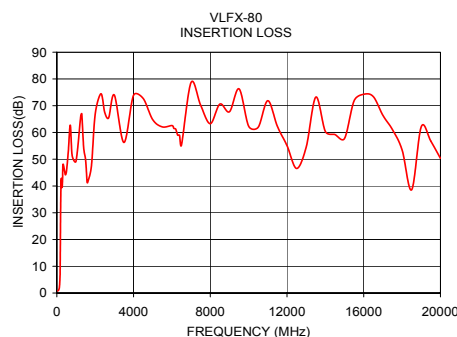


Functional Schematic



Typical Performance Data @ 25°C

Frequency (MHz)	Insertion Loss (dB)	VSWR (:1)
50	0.75	1.19
65	0.88	1.19
80	0.98	1.17
90	1.08	1.12
100	1.17	1.09
120	1.62	1.20
145	3.08	1.98
160	4.90	2.75
200	33.12	10.24
220	41.24	13.35
300	42.63	19.05
400	45.66	26.84
500	45.31	35.47
1000	49.28	74.28
2500	67.46	26.17
5000	64.78	66.41
7500	70.16	21.10
10000	62.34	7.22
15000	57.77	7.86
20000	50.35	15.48



P.O. Box 350166, Brooklyn, New York 11235-0003 (718) 934-4500 Fax (718) 332-4661 For detailed performance specs & shopping online see Mini-Circuits web site



The Design Engineers Search Engine Provides ACTUAL Data Instantly From MINI-CIRCUITS At: www.minicircuits.com

RF/IF MICROWAVE COMPONENTS

REV. B
M120155
VLFX-80
EDU-0399
ED-11930A/1
UR/JAD/CP
081105
Page 1 of 1