

Low Pass Filter

VLFX-540

50Ω DC to 540 MHz (40 dB Isolation up to 20 GHz)

Maximum Ratings

Operating Temperature -55°C to 100°C

Storage Temperature -55°C to 100°C

RF Power Input* 10W max. at 25°C

*Passband rating, derate linearly to 3.5W at 100°C ambient.

Features

- very good isolation, 40 dB up to 20 GHz
- 21 sections
- excellent power handling, 10W
- temperature stable LTCC internal structure
- re-entry frequency > 20 GHz
- rugged unibody construction
- protected by US patent 6,943,646

Applications

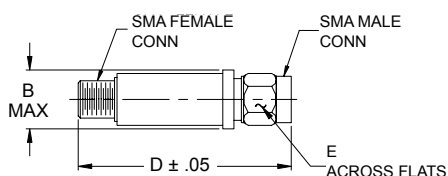
- harmonic rejection
- transmitters/receivers
- lab use
- test instrumentation



CASE STYLE: FF1118

Connectors	Model	Price	Qty.
SMA	VLFX-540	\$39.95 ea.	(1-9)

Outline Drawing



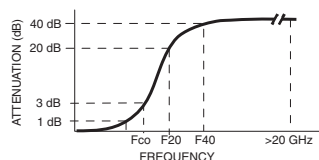
Outline Dimensions (inch mm)

B	D	E	wt.
.410	2.67	.312	grams
10.41	67.82	7.92	17.0

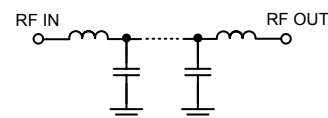
Low Pass Filter Electrical Specifications @ 25°C

MODEL NO.	PASSBAND (MHz) (Loss < 1.2dB) Max.	Fco, MHz Nom (Loss 3 dB) Typ	STOPBAND (MHz) (Loss, dB)		VSWR (:1)		NO. OF SECTIONS
			F20 Min.	F40 Typ.	Stopband Typ.	Passband Typ.	
VLFX-540	DC-540	810	1000	1100-20000	10	1.2	21

Typical Frequency Response

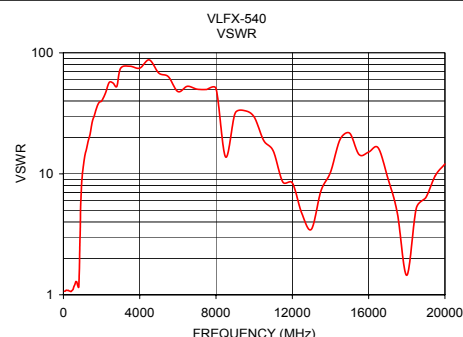
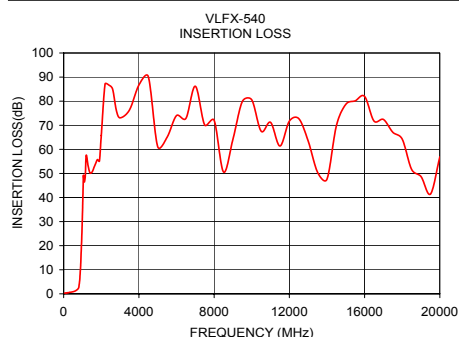


Functional Schematic



Typical Performance Data @ 25°C

Frequency (MHz)	Insertion Loss (dB)	VSWR (:1)
50	0.32	1.07
250	0.46	1.09
400	0.69	1.06
540	0.95	1.15
620	1.21	1.24
700	1.64	1.28
810	3.08	1.25
880	8.81	3.45
1000	32.81	10.22
1100	46.43	13.44
1500	50.47	26.44
2000	65.72	39.98
3000	73.08	74.63
5000	61.13	68.07
7500	70.11	49.82
10000	80.55	29.49
12500	72.73	4.71
15000	78.70	21.69
17500	67.07	4.77
20000	56.88	12.07



Mini-Circuits®
ISO 9001 ISO 14001 CERTIFIED

ALL NEW
minicircuits.com

P.O. Box 350166, Brooklyn, New York 11235-0003 (718) 934-4500 Fax (718) 332-4661 For detailed performance specs & shopping online see Mini-Circuits web site



The Design Engineers Search Engine Provides ACTUAL Data Instantly From MINI-CIRCUITS At: www.minicircuits.com

RF/IF MICROWAVE COMPONENTS

REV. A
M97025
VLFX-540
EDU-0399
ED-11930A/9
URJ/AD/CP
080916
Page 1 of 1