

Low Pass Filter

VLFX-500

50Ω DC to 500 MHz (40 dB Isolation up to 20 GHz)

Maximum Ratings

Operating Temperature	-55°C to 100°C
Storage Temperature	-55°C to 100°C
RF Power Input*	10W max. at 25°C

*Passband rating, derate linearly to 3.5W at 100°C ambient.

Features

- very good isolation, 40 dB up to 20 GHz
- 21 sections
- excellent power handling, 10W
- temperature stable LTCC internal structure
- re-entry frequency > 20 GHz
- rugged unibody construction
- protected by US patent 6,943,646



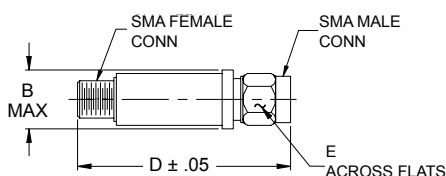
CASE STYLE: FF1118

Connectors	Model	Price	Qty.
SMA	VLFX-50	\$39.95 ea.	(1-9)

Applications

- harmonic rejection
- transmitters/receivers
- lab use
- test instrumentation

Outline Drawing



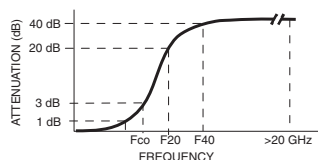
Outline Dimensions (inch/mm)

B	D	E	wt.
.410	2.67	.312	grams
10.41	67.82	7.92	17.0

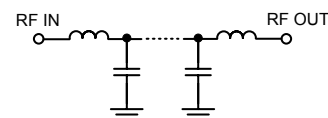
Low Pass Filter Electrical Specifications @ 25°C

MODEL NO.	PASSBAND (MHz) (Loss < 1.2dB) Max.	Fco, MHz Nom (Loss 3 dB) Typ	STOPBAND (MHz) (Loss, dB)		VSWR (:1)		NO. OF SECTIONS
			F20 Min.	F40 Typ.	Stopband Typ.	Passband Typ.	
VLFX-500	DC-500	750	900	1100-20000	10	1.15	21

Typical Frequency Response

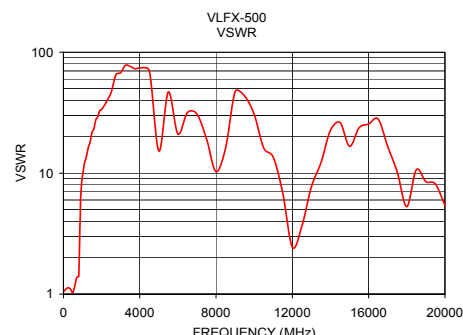
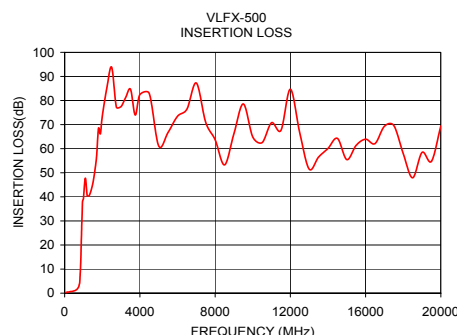


Functional Schematic



Typical Performance Data @ 25°C

Frequency (MHz)	Insertion Loss (dB)	VSWR (:1)
50	0.29	1.06
150	0.38	1.11
375	0.71	1.10
500	0.94	1.03
575	1.17	1.13
650	1.53	1.29
750	2.70	1.39
820	7.04	1.70
900	25.98	6.19
1100	47.73	12.07
2000	73.43	33.59
3000	77.47	67.57
4000	82.46	74.00
5000	61.14	15.25
7500	70.97	19.22
10000	64.81	30.61
12500	66.48	3.65
15000	55.46	16.68
17500	69.61	10.20
20000	69.43	5.42



P.O. Box 350166, Brooklyn, New York 11235-0003 (718) 934-4500 Fax (718) 332-4661 For detailed performance specs & shopping online see Mini-Circuits web site



The Design Engineers Search Engine Provides ACTUAL Data Instantly From MINI-CIRCUITS At: www.minicircuits.com

RF/IF MICROWAVE COMPONENTS