

# Low Pass Filter

## VLFX-225

50Ω DC to 225 MHz (40 dB Isolation up to 20 GHz)

### Maximum Ratings

Operating Temperature -55°C to 100°C

Storage Temperature -55°C to 100°C

RF Power Input\* 10W max. at 25°C

\*Passband rating, derate linearly to 3.5W at 100°C ambient.

### Features

- very good isolation, 40 dB up to 20 GHz
- 21 sections
- excellent power handling, 10W
- temperature stable LTCC internal structure
- re-entry frequency > 20 GHz
- rugged unibody construction
- protected by US patent 6,943,646

### Applications

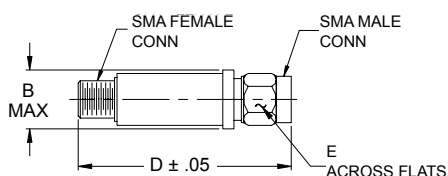
- harmonic rejection
- transmitters/receivers
- lab use
- test instrumentation



CASE STYLE: FF1118

Connectors	Model	Price	Qty.
SMA	VLFX-225	\$39.95 ea.	(1-9)

### Outline Drawing



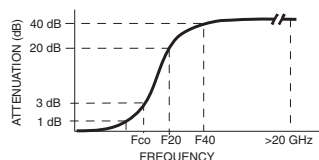
### Outline Dimensions (inch mm)

B	D	E	wt.
.410	2.67	.312	grams
10.41	67.82	7.92	17.0

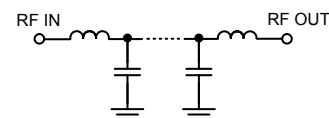
### Low Pass Filter Electrical Specifications @ 25°C

MODEL NO.	PASSBAND (MHz) (Loss < 1.2dB) Max.	Fco, MHz Nom (Loss 3 dB) Typ	STOPBAND (MHz) (Loss, dB)		VSWR (:1)		NO. OF SECTIONS
			F20 Min.	F40 Typ.	Stopband Typ.	Passband Typ.	
VLFX-225	DC-225	350	460	520-20000	10	1.15	21

### Typical Frequency Response

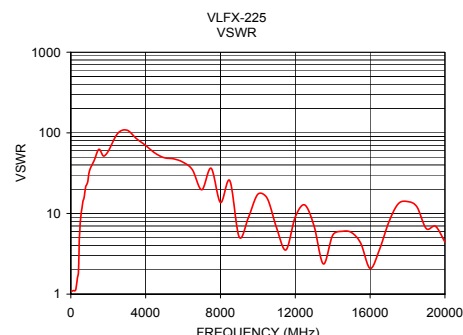
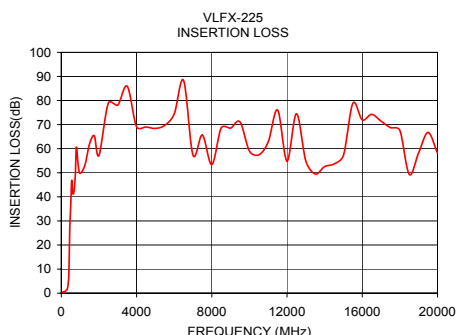


### Functional Schematic



### Typical Performance Data @ 25°C

Frequency (MHz)	Insertion Loss (dB)	VSWR (:1)
50	0.18	1.08
100	0.52	1.10
160	0.61	1.11
225	0.92	1.10
260	1.16	1.13
300	1.52	1.28
350	3.09	1.56
400	6.96	1.78
460	28.98	5.16
520	41.12	8.40
600	41.60	11.87
750	49.81	18.37
1000	49.72	33.93
2500	78.92	98.08
5000	68.41	49.08
7500	65.61	36.38
10000	59.00	17.35
12500	74.50	12.80
15000	57.27	5.82
20000	58.14	4.44



**Mini-Circuits®**  
ISO 9001 ISO 14001 CERTIFIED

ALL NEW  
minicircuits.com

P.O. Box 350166, Brooklyn, New York 11235-0003 (718) 934-4500 Fax (718) 332-4661 For detailed performance specs & shopping online see Mini-Circuits web site



The Design Engineers Search Engine Provides ACTUAL Data Instantly From MINI-CIRCUITS At: [www.minicircuits.com](http://www.minicircuits.com)

RF/IF MICROWAVE COMPONENTS

REV. A  
M97025  
VLFX-225  
EDU-0399  
ED-11930A/3  
URJ/AD/CP  
080916  
Page 1 of 1