

Low Pass Filter

VLFX-1125

50Ω DC to 1125 MHz (40 dB Isolation up to 20 GHz)

Maximum Ratings

Operating Temperature	-55°C to 100°C
Storage Temperature	-55°C to 100°C
RF Power Input*	10W max. at 25°C

*Passband rating, derate linearly to 3.5W at 100°C ambient.

Features

- very good isolation, 40 dB up to 20 GHz
- 21 sections
- excellent power handling, 10W
- temperature stable LTCC internal structure
- re-entry frequency > 20 GHz
- rugged unibody construction
- protected by US patent 6,943,646



CASE STYLE: FF1118

Connectors	Model	Price	Qty.
SMA	VLFX-1125	\$39.95 ea.	(1-9)

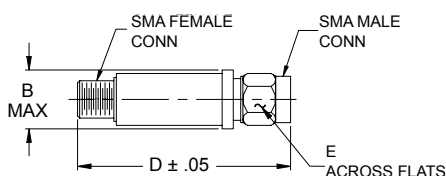
Applications

- harmonic rejection
- transmitters/receivers
- lab use
- test instrumentation

Low Pass Filter Electrical Specifications @ 25°C

MODEL NO.	PASSBAND (MHz) (Loss < 1.2dB) Max.	Fco, MHz Nom (Loss 3 dB) Typ	STOPBAND (MHz) (Loss, dB)		VSWR (:1)		NO. OF SECTIONS
			F20 Min.	F40 Typ.	Stopband Typ.	Passband Typ.	
VLFX-1125	DC-1125	1825	2125	2300-20000	10	1.4	21

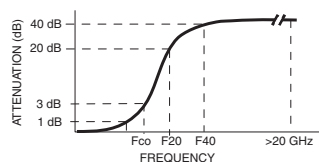
Outline Drawing



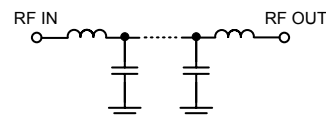
Outline Dimensions (inch mm)

B	D	E	wt.
.410	2.67	.312	grams
10.41	67.82	7.92	17.0

Typical Frequency Response

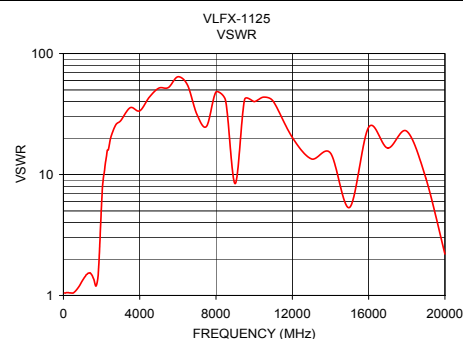
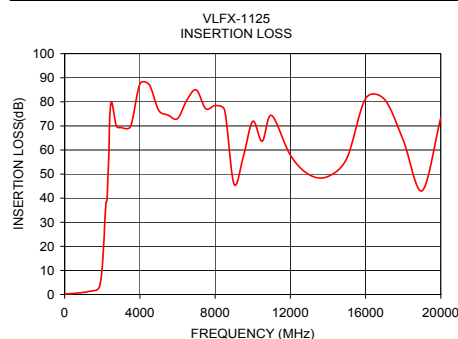


Functional Schematic



Typical Performance Data @ 25°C

Frequency (MHz)	Insertion Loss (dB)	VSWR (:1)
50	0.20	1.05
250	0.29	1.06
500	0.47	1.05
1000	0.98	1.33
1125	1.00	1.42
1250	1.22	1.50
1500	1.51	1.47
1825	2.87	1.57
1950	7.42	3.84
2125	28.25	10.09
2300	48.17	15.86
4000	87.43	33.59
6000	73.04	64.26
8000	78.45	48.12
10000	71.93	40.02
12000	57.91	20.21
14000	49.00	15.03
16000	81.35	24.55
18000	64.13	22.79
20000	73.49	2.20



P.O. Box 350166, Brooklyn, New York 11235-0003 (718) 934-4500 Fax (718) 332-4661 For detailed performance specs & shopping online see Mini-Circuits web site



The Design Engineers Search Engine Provides ACTUAL Data Instantly From MINI-CIRCUITS At: www.minicircuits.com

RF/IF MICROWAVE COMPONENTS

REV. A
M97025
VLFX-1125
EDU-0399
ED-11930A/17
URJ/RS/CP
080916
Page 1 of 1