

Low Pass Filter

VLFX-105

50Ω DC to 105 MHz (40 dB Isolation up to 20 GHz)

Maximum Ratings

Operating Temperature -55°C to 100°C

Storage Temperature -55°C to 100°C

RF Power Input* 10W max. at 25°C

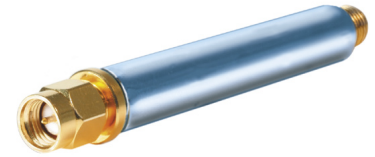
*Passband rating, derate linearly to 3.5W at 100°C ambient.

Features

- very good isolation, 40 dB up to 20 GHz
- 21 sections
- excellent power handling, 10W
- temperature stable LTCC internal structure
- re-entry frequency > 20 GHz
- rugged unibody construction
- protected by US patent 6,943,646

Applications

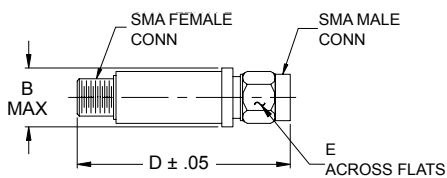
- harmonic rejection
- transmitters/receivers
- lab use
- test instrumentation



CASE STYLE: FF1118

Connectors	Model	Price	Qty.
SMA	VLFX-105	\$39.95 ea.	(1-9)

Outline Drawing



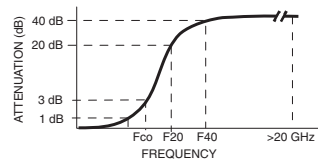
Outline Dimensions (inch mm)

B	D	E	wt.
.410	2.67	.312	grams
10.41	67.82	7.92	17.0

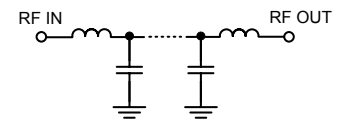
Low Pass Filter Electrical Specifications @ 25°C

MODEL NO.	PASSBAND (MHz) (Loss < 1.2dB) Max.	Fco, MHz Nom (Loss 3 dB) Typ	STOPBAND (MHz) (Loss, dB)		VSWR (:1)		NO. OF SECTIONS
			F20 Min.	F40 Typ.	Stopband Typ.	Passband Typ.	
VLFX-105	DC-105	165	250	400-20000	10	1.2	21

Typical Frequency Response

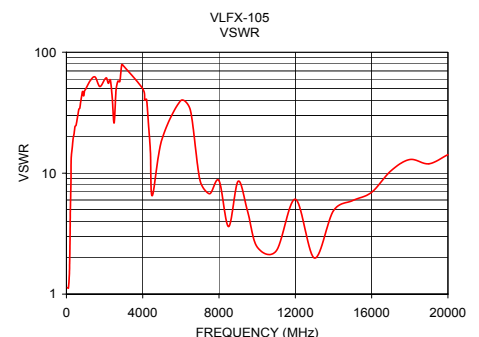
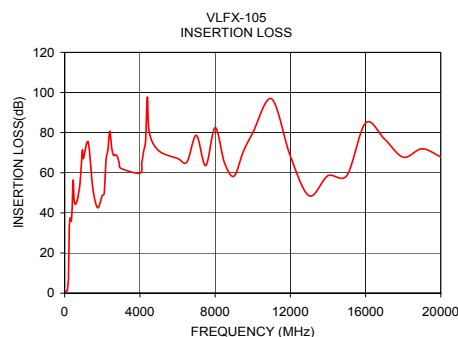


Functional Schematic



Typical Performance Data @ 25°C

Frequency (MHz)	Insertion Loss (dB)	VSWR (:1)
50	0.63	1.13
80	0.81	1.12
105	1.00	1.13
114	1.13	1.17
120	1.22	1.19
140	1.51	1.32
165	3.18	1.70
200	6.70	4.53
250	33.72	13.14
400	42.35	21.10
500	46.66	24.83
750	50.37	39.03
1000	67.08	49.17
2500	72.46	26.01
5000	70.98	18.90
7500	63.56	6.76
10000	79.87	2.45
12000	68.30	6.09
16000	84.80	6.95
20000	67.90	14.23



Mini-Circuits®
ISO 9001 ISO 14001 CERTIFIED

ALL NEW
minicircuits.com

P.O. Box 350166, Brooklyn, New York 11235-0003 (718) 934-4500 Fax (718) 332-4661 For detailed performance specs & shopping online see Mini-Circuits web site



The Design Engineers Search Engine Provides ACTUAL Data Instantly From MINI-CIRCUITS At: www.minicircuits.com

RF/IF MICROWAVE COMPONENTS

REV. A
M97025
VLFX-105
EDU-0399
ED-11930A/2
URJ/AD/CP
080916
Page 1 of 1