

# Low Pass Filter

## VLF-6400+

50Ω DC to 6400 MHz

### Maximum Ratings

Operating Temperature	-55°C to 100°C
Storage Temperature	-55°C to 100°C
RF Power Input*	8W at 25°C
DC Current Input to Output	0.5A max. at 25°C

\*Passband rating, derate linearly to 3 W at 100°C ambient  
Permanent damage may occur if any of these limits are exceeded.

### Features

- Rugged uni-body construction, small size
- 7 sections
- Excellent power handling, 8W
- Temperature stable
- Low cost
- Protected by US patent 6,943,646

### Applications

- Harmonic rejection
- Transmitters/receivers
- Lab use



CASE STYLE: FF704

Connectors	Model	Price	Qty.
SMA	VLF-6400+	\$ 21.95 ea.	(1-9)

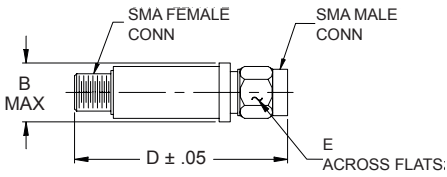
+ RoHS compliant in accordance with EU Directive (2002/95/EC)

The +suffix has been added in order to identify RoHS Compliance. See our web site for RoHS Compliance methodologies and qualifications.

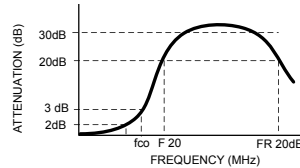
### Low Pass Filter Electrical Specifications (T<sub>AMB</sub> = 25°C)

PASSBAND (MHz) (loss < 2 dB) Max.	f <sub>co</sub> , MHz Nom. (loss 3 dB) Typ.	STOP BAND (MHz) (loss, dB)			VSWR (:1)		NO. OF SECTIONS
		F 20 Min.	30 Typ.	FR 20 Typ.	Stopband Typ.	Passband Typ.	
DC - 6400	7200	8300	7770 - 10200	12500	17	1.2	7

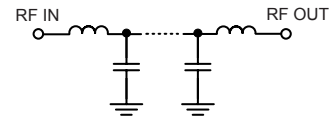
### Outline Drawing



### Typical frequency response



### Electrical schematic



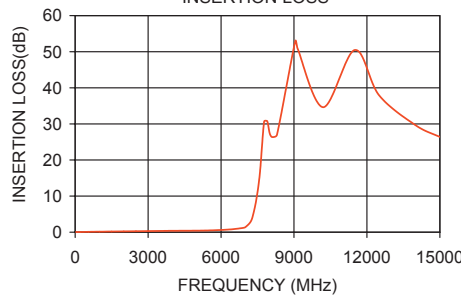
### Outline Dimensions (inch/mm)

B	D	E	wt.
.410	1.43	.312	grams
10.41	36.32	7.92	10

### Typical Performance Data at 25°C

Frequency (MHz)	Insertion Loss (dB)	VSWR (:1)
40	0.06	1.04
500	0.08	1.03
2000	0.22	1.17
4000	0.39	1.28
5500	0.48	1.11
6400	0.79	1.33
7000	1.41	1.25
7200	2.73	1.92
7350	5.61	3.58
7500	11.17	6.94
7680	22.01	11.77
7770	30.63	13.81
8300	26.96	20.70
10200	34.63	31.03
11000	39.63	40.41
12500	37.94	69.49
15000	26.38	57.91

VLF-6400+  
INSERTION LOSS



VLF-6400+  
VSWR

