

Low Pass Filter

VLF-5500+

50Ω DC to 5500 MHz

Maximum Ratings

Operating Temperature -55°C to 100°C

Storage Temperature -55°C to 100°C

RF Power Input* 8W at 25°C

DC Current Input to Output 0.5A max. at 25°C

*Passband rating, derate linearly to 3 W at 100°C ambient
Permanent damage may occur if any of these limits are exceeded.

Features

- Rugged uni-body construction, small size
- 7 sections
- Excellent power handling, 8W
- Temperature stable
- Low cost
- Protected by US Patent 6,943,646

Applications

- Harmonic rejection
- Transmitters/receivers
- Lab use



CASE STYLE: FF704

Connectors	Model	Price	Qty.
SMA	VLF-5500+	\$ 21.95 ea.	(1-9)

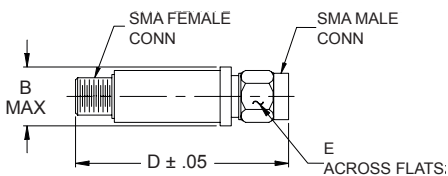
+ RoHS compliant in accordance with EU Directive (2002/95/EC)

The +suffix has been added in order to identify RoHS Compliance. See our web site for RoHS Compliance methodologies and qualifications.

Low Pass Filter Electrical Specifications (T_{AMB} = 25°C)

PASSBAND (MHz) (loss < 2 dB) Max.	f _{co} , MHz Nom. (loss 3 dB) Typ.	STOP BAND (MHz) (loss, dB)			VSWR (:1)		NO. OF SECTIONS
		F 20 Min.	30 Typ.	FR 20 Typ.	Stopband Typ.	Passband Typ.	
DC - 5500	6200	7200	6770 - 9500	12100	17	1.3	7

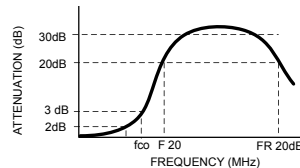
Outline Drawing



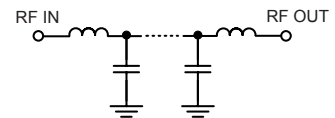
Outline Dimensions (inch mm)

B	D	E	wt.
.410	1.43	.312	grams
10.41	36.32	7.92	10

Typical frequency response



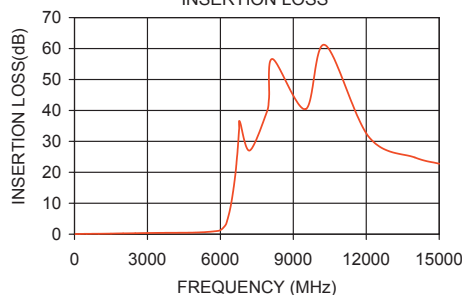
Electrical schematic



Typical Performance Data at 25°C

Frequency (MHz)	Insertion Loss (dB)	VSWR (:1)
40	0.04	1.04
500	0.12	1.04
1500	0.20	1.14
3000	0.39	1.33
4800	0.51	1.13
5500	0.81	1.37
6200	2.80	1.99
6300	4.85	3.30
6400	8.25	5.72
6550	15.66	10.96
6700	26.89	15.96
6770	34.76	17.75
7200	26.40	24.48
9500	40.75	37.77
10500	51.98	48.26
12100	32.16	64.35
15000	25.07	37.77

VLF-5500+
INSERTION LOSS



VLF-5500+
VSWR

