

Coaxial Low Pass Filter

50Ω DC to 225 MHz

VLF-225+ VLF-225



Maximum Ratings

| | |
|----------------------------|-------------------|
| Operating Temperature | -55°C to 100°C |
| Storage Temperature | -55°C to 100°C |
| RF Power Input* | 8.5W max. at 25°C |
| DC Current Input to Output | 0.5A max. at 25°C |

* Passband rating, derate linearly to 3.5W at 100°C ambient. Permanent damage may occur if any of these limits are exceeded.

Features

- rugged uni-body construction, small size
- 7 sections
- excellent power handling, 8.5W
- temperature stable
- low cost
- protected by U.S. Patent 6,943,646

Applications

- harmonic rejection
- transmitters/receivers
- lab use

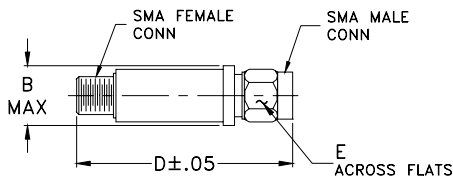
CASE STYLE: FF704

| Connectors | Model | Price | Qty. |
|------------|------------|-------------|-------|
| SMA | VLF-225(+) | \$21.95 ea. | (1-9) |

+ RoHS compliant in accordance with EU Directive (2002/95/EC)

The +Suffix identifies RoHS Compliance. See our web site for RoHS Compliance methodologies and qualifications.

Outline Drawing



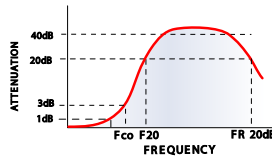
Outline Dimensions (inch/mm)

| B | D | E | wt |
|-------|-------|------|-------|
| .410 | 1.43 | .312 | grams |
| 10.41 | 36.32 | 7.92 | 10.0 |

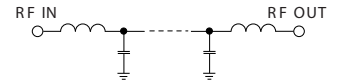
Electrical Specifications (T_{AMB}=25°C)

| PASSBAND (MHz) (loss < 1.2 dB) | fco, MHz Nom. (loss 3 dB) | STOP BAND (MHz) (loss, dB) | | | VSWR (:1) | | NO. OF SECTIONS |
|-----------------------------------|---------------------------------|-------------------------------|----------|-------|-----------|----------|-----------------|
| | | f 20 | 40 | fr 20 | Stopband | Passband | |
| Max. | Typ. | Min. | Typ. | Typ. | Typ. | Typ. | |
| DC-225 | 350 | 460 | 510-2500 | 5500 | 20 | 1.2 | 7 |

typical frequency response

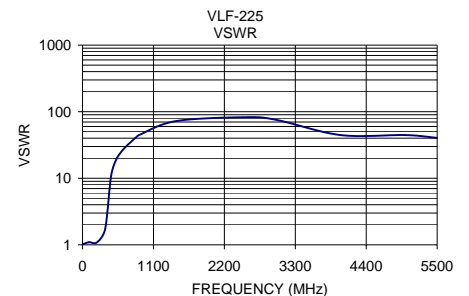
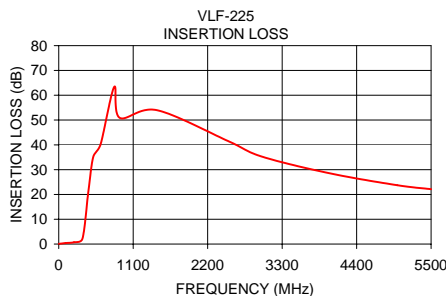


electrical schematic



Typical Performance Data at 25°C

| Frequency (MHz) | Insertion Loss (dB) | VSWR (:1) |
|-----------------|---------------------|-----------|
| 1 | 0.09 | 1.02 |
| 100 | 0.38 | 1.09 |
| 225 | 0.72 | 1.09 |
| 350 | 2.21 | 1.71 |
| 440 | 21.59 | 10.43 |
| 510 | 35.18 | 17.93 |
| 620 | 40.34 | 26.33 |
| 820 | 63.40 | 40.41 |
| 900 | 50.90 | 45.72 |
| 1450 | 53.99 | 72.39 |
| 2500 | 41.57 | 82.73 |
| 3000 | 35.27 | 75.53 |
| 4000 | 28.53 | 44.55 |
| 5000 | 23.72 | 44.55 |
| 5500 | 22.12 | 40.41 |



Mini-Circuits®

ISO 9001 ISO 14001 AS 9100 CERTIFIED

P.O. Box 350166, Brooklyn, New York 11235-0003 (718) 934-4500 Fax (718) 332-4661 The Design Engineers Search Engine Provides ACTUAL Data Instantly at minicircuits.com

IF/RF MICROWAVE COMPONENTS

For detailed performance specs & shopping online see web site

Notes: 1. Performance and quality attributes and conditions not expressly stated in this specification sheet are intended to be excluded and do not form a part of this specification sheet. 2. Electrical specifications and performance data contained herein are based on Mini-Circuit's applicable established test performance criteria and measurement instructions. 3. The parts covered by this specification sheet are subject to Mini-Circuits standard limited warranty and terms and conditions (collectively, "Standard Terms"); Purchasers of this part are entitled to the rights and benefits contained therein. For a full statement of the Standard Terms and the exclusive rights and remedies thereunder, please visit Mini-Circuits' website at www.minicircuits.com/MCLStore/terms.jsp.

REV. G
M112160
VLF-225
ED-6588/1
RVN/AD/CP
090824