

# Low Pass Filter

## VLF-190+

50Ω DC to 190 MHz

### Maximum Ratings

Operating Temperature -55°C to 100°C

Storage Temperature -55°C to 100°C

RF Power Input\* 8W at 25°C

DC Current Input to Output 0.5A max. at 25°C

\*Passband rating, derate linearly to 3 W at 100°C ambient  
Permanent damage may occur if any of these limits are exceeded.

### Features

- Rugged uni-body construction, small size
- 7 sections
- Excellent power handling, 8W
- Temperature stable
- Low cost
- Protected by US patent 6,943,646

### Applications

- Harmonic rejection
- Transmitters/receivers
- Lab use



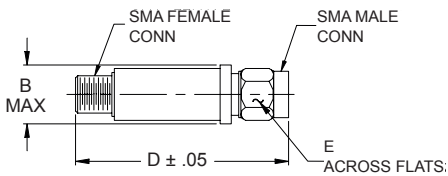
CASE STYLE: FF704

Connectors	Model	Price	Qty.
SMA	VLF-190+	\$ 21.95 ea.	(1-9)

+ RoHS compliant in accordance with EU Directive (2002/95/EC)

The +suffix has been added in order to identify RoHS Compliance. See our web site for RoHS Compliance methodologies and qualifications.

### Outline Drawing



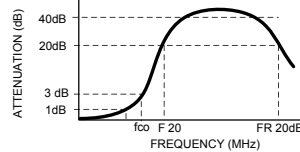
### Outline Dimensions (inch mm)

B	D	E	wt.
.410	1.43	.312	grams
10.41	36.32	7.92	10

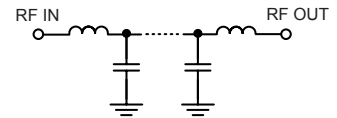
### Low Pass Filter Electrical Specifications (T<sub>AMB</sub> = 25°C)

PASSBAND (MHz) (loss < 1 dB) Max.	f <sub>co</sub> , MHz Nom. (loss 3 dB) Typ.	STOP BAND (MHz) (loss, dB)			VSWR (:1)		NO. OF SECTIONS
		F 20 Min.	40 Typ.	FR 20 Typ.	Stopband Typ.	Passband Typ.	
DC - 190	280	400	510 - 2850	6550	17	1.2	7

### Typical frequency response



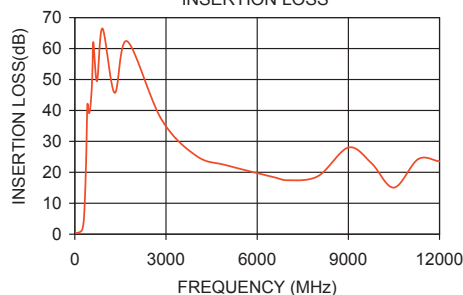
### Electrical schematic



### Typical Performance Data at 25°C

Frequency (MHz)	Insertion Loss (dB)	VSWR (:1)
40	0.26	1.08
100	0.44	1.08
170	0.71	1.10
190	0.83	1.12
250	1.65	1.47
280	3.15	2.13
310	6.83	3.46
340	13.47	4.47
375	25.46	3.89
400	37.43	3.86
510	40.97	12.99
850	57.21	52.65
1500	48.19	64.35
2850	37.12	64.35
6550	18.42	32.18
9000	28.00	6.03
12000	23.53	4.26

VLF-190+  
INSERTION LOSS



VLF-190+  
VSWR

