

# Ultra-Reliable High Pass Filter

## VHP-16

50Ω 1900 to 2700 MHz



### Maximum Ratings

Operating Temperature	-55°C to 100°C
Storage Temperature	-55°C to 100°C
RF Power Input*	14W max. at 25°C

\* Passband rating, derate linearly to 0.4x Pmax at 100°C ambient. Permanent damage may occur if any of these limits are exceeded.

### Features

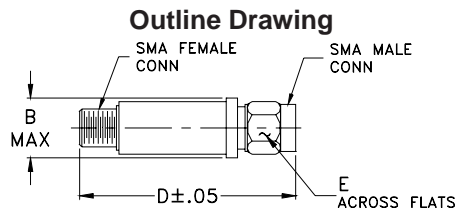
- rugged unibody construction, small size
- pass band insertion loss 1.0 dB typ.
- excellent power handling, 14W
- low cost

### Applications

- sub-harmonic rejection of VCO
- transmitters/receivers
- lab use

CASE STYLE: FF704

Connectors	Model	Price	Qty.
SMA	VHP-16	\$29.95 ea.	(1-9)



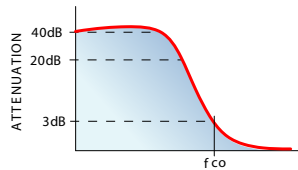
### Electrical Specifications (T<sub>AMB</sub>=25°C)

STOP BAND (MHz)		f <sub>co</sub> , MHz Nom.	PASSBAND (MHz)	VSWR (:1)	
(loss > 40 dB)	(loss > 20 dB)	(loss 3 dB)	(loss < 1.3 dB)	Stopband	Passband
		Typ.		Typ.	Typ.
DC-1030	1300	1580	1900-2700	18	1.3

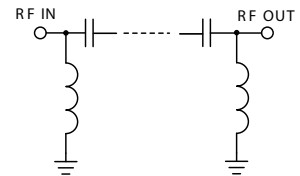
### Outline Dimensions (inch/mm)

B	D	E	wt
.410	1.43	.312	grams
10.41	36.32	7.92	10.0

### typical frequency response

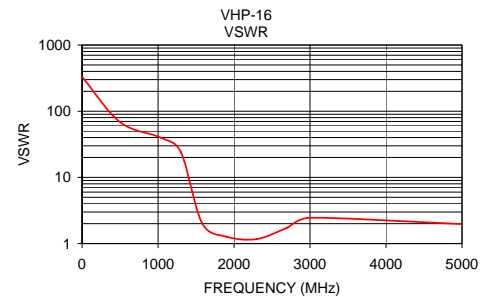
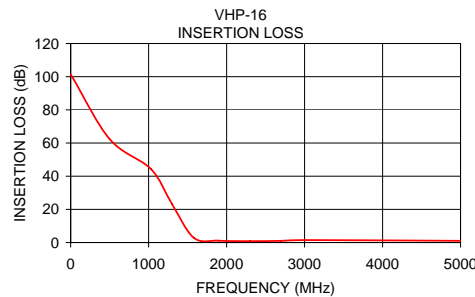


### electrical schematic



### Typical Performance Data

Frequency (MHz)	Insertion Loss (dB)	VSWR (:1)
1.00	101.37	330.92
500.00	62.34	68.33
1030.00	44.28	40.07
1300.00	23.15	24.17
1580.00	2.82	2.03
1900.00	1.12	1.27
2300.00	0.80	1.17
2700.00	1.01	1.74
3000.00	1.47	2.45
5000.00	1.03	1.97



**Mini-Circuits®**  
ISO 9001 ISO 14001 AS 9100 CERTIFIED

P.O. Box 350166, Brooklyn, New York 11235-0003 (718) 934-4500 Fax (718) 332-4661 The Design Engineers Search Engine Provides ACTUAL Data Instantly at [minicircuits.com](http://minicircuits.com)

For detailed performance specs & shopping online see web site

**Notes:** 1. Performance and quality attributes and conditions not expressly stated in this specification sheet are intended to be excluded and do not form a part of this specification sheet. 2. Electrical specifications and performance data contained herein are based on Mini-Circuit's applicable established test performance criteria and measurement instructions. 3. The parts covered by this specification sheet are subject to Mini-Circuits standard limited warranty and terms and conditions (collectively, "Standard Terms"); Purchasers of this part are entitled to the rights and benefits contained therein. For a full statement of the Standard Terms and the exclusive rights and remedies thereunder, please visit Mini-Circuits' website at [www.minicircuits.com/MCLStore/terms.jsp](http://www.minicircuits.com/MCLStore/terms.jsp).

REV. A  
M92137  
VHP-16  
ED10545B/2  
WZ/AD/CP/AM  
090824