

Plug-In

Frequency Mixer

Level 13 (LO Power +13 dBm) 10 to 4200 MHz

TFM-42MH+



CASE STYLE: B13
PRICE: \$74.45 ea. QTY (1-9)

+ RoHS compliant in accordance with EU Directive (2002/95/EC)

The +Suffix has been added in order to identify RoHS Compliance. See our web site for RoHS Compliance methodologies and qualifications.

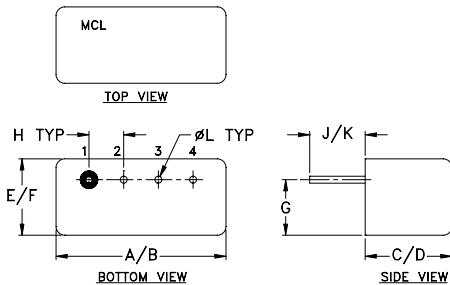
Maximum Ratings

Operating Temperature	-55°C to 100°C
Storage Temperature	-55°C to 100°C
RF Power	200mW
IF Current	40mA
Permanent damage may occur if any of these limits are exceeded.	

Pin Connections

LO	1
RF	4
IF	2
GROUND	3
CASE GROUND	3

Outline Drawing



Outline Dimensions (inch/mm)

A	B	C	D	E	F
.480	.500	.390	.405	.210	.230
12.19	12.70	9.91	10.29	5.33	5.84
G	H	J	K	L	wt
.16	.100	.14	.20	.020	grams
4.06	2.54	3.56	5.08	0.51	2.3

Features

- low conversion loss, 7.46 dB typ.
- wideband, 10 to 4200 MHz
- excellent isolation, 40 dB typ. L-R, 35 dB typ. L-I
- rugged welded construction
- hermetically sealed

Applications

- satellite down converters
- cellular
- line of sight links
- PCS

Electrical Specifications

FREQUENCY (MHz)		CONVERSION LOSS (dB)				LO-RF ISOLATION (dB)						LO-IF ISOLATION (dB)					
LO/RF	IF	Mid-Band		Total Range Max.	Typ.	L		M		U		L		M		U	
f_L - f_U		\bar{X}	σ			Typ.	Min.	Typ.	Min.	Typ.	Min.	Typ.	Min.	Typ.	Min.	Typ.	Min.
10-4200	10-1000	7.46	0.12	8.5	11	35	25	40	25	35	25	35	20	35	25	27	20

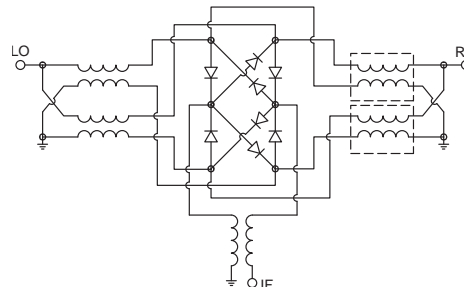
1 dB COMP: +9 dBm typ.

L = low range [f_L to $10 f_L$]
m = mid band [$2 f_L$ to $f_U/2$]
U = upper range [$f_U/2$ to f_U]

Typical Performance Data

Frequency (MHz)		Conversion Loss (dB)	Isolation L-R (dB)	Isolation L-I (dB)	VSWR RF Port (:1)	VSWR LO Port (:1)
RF	LO	LO +13dBm	LO +13dBm	LO +13dBm	LO +13dBm	LO +13dBm
10.00	40.00	7.94	20.28	21.61	2.29	2.30
20.00	50.00	7.65	27.98	29.30	1.39	1.76
200.00	170.00	7.32	31.88	32.33	1.38	1.54
295.00	265.00	7.53	32.40	33.77	1.48	1.47
500.00	470.00	7.77	31.96	33.79	1.65	1.42
722.50	692.50	7.70	32.05	32.52	1.88	1.42
1000.00	970.00	7.67	32.59	29.95	2.09	1.45
1150.00	1120.00	7.63	32.84	29.21	2.18	1.37
1435.00	1405.00	6.82	35.06	28.00	2.18	1.47
1577.50	1547.50	7.65	34.54	27.23	2.08	1.58
1862.50	1832.50	7.75	36.03	27.46	1.96	1.73
2005.00	1975.00	8.44	34.15	27.88	2.05	1.95
2290.00	2260.00	8.70	30.53	30.66	2.44	2.32
2500.00	2470.00	8.40	31.06	30.74	2.78	2.05
2717.50	2687.50	8.50	29.50	31.68	3.21	2.02
3000.00	2970.00	8.07	33.65	32.53	3.16	1.58
3145.00	3115.00	7.62	33.58	31.08	3.37	1.34
3500.00	3470.00	7.57	32.49	26.48	3.33	1.23
3857.50	3827.50	7.73	28.41	24.34	2.13	1.96
4200.00	4170.00	8.84	29.31	25.00	1.19	2.35

Electrical Schematic



Mini-Circuits
ISO 9001 ISO 14001 AS 9100 CERTIFIED

P.O. Box 350166, Brooklyn, New York 11235-0003 (718) 934-4500 Fax (718) 332-4661 *The Design Engineers Search Engine* Provides ACTUAL Data Instantly at minicircuits.com

For detailed performance specs & shopping online see web site

Notes: 1. Performance and quality attributes and conditions not expressly stated in this specification sheet are intended to be excluded and do not form a part of this specification sheet. 2. Electrical specifications and performance data contained herein are based on Mini-Circuit's applicable established test performance criteria and measurement instructions. 3. The parts covered by this specification sheet are subject to Mini-Circuits standard limited warranty and terms and conditions (collectively, "Standard Terms"); Purchasers of this part are entitled to the rights and benefits contained therein. For a full statement of the Standard Terms and the exclusive rights and remedies thereunder, please visit Mini-Circuits' website at www.minicircuits.com/MCLStore/terms.jsp.

REV. A
M98898
TFM-42MH+
DJ/TD/CP/AM
091006
Page 1 of 2

