

Surface Mount Attenuator/Switch

50Ω Bi-Phase 2 to 400 MHz

TFAS-1SM+



CASE STYLE: NNN150
PRICE: \$18.20 ea. QTY. (1-9)

+ RoHS compliant in accordance with EU Directive (2002/95/EC)

The +Suffix has been added in order to identify RoHS Compliance. See our web site for RoHS Compliance methodologies and qualifications.

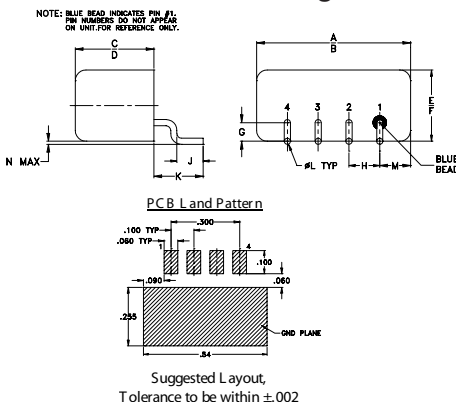
Maximum Ratings

Operating Temperature	-55°C to 100°C
Storage Temperature	-55°C to 100°C
Control Current	30mA
Permanent damage may occur if any of these limits are exceeded.	

Pin Connections

INPUT	1
OUTPUT	4
CONTROL	2
GROUND EXT.	3
CASE GROUND	3

Outline Drawing

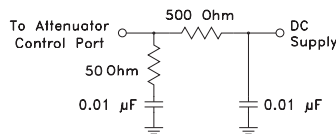


Outline Dimensions (inch/mm)

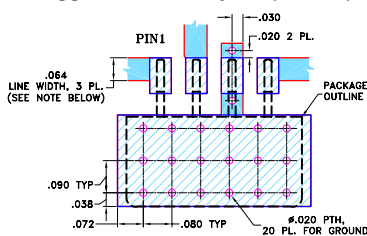
A	B	C	D	E	F	G
.50	.48	.255	.240	.23	.21	.06
12.70	12.19	6.48	6.10	5.84	5.33	1.52

H	J	K	L	M	N	wt
.100	.09	.16	.020	.09	.005	grams
2.54	2.29	4.06	0.51	2.29	0.13	1.9

suggested control port biasing configuration



Demo Board MCL P/N: TB-201 Suggested PCB Layout (PL-081)



Features

- low insertion loss, 1.6 dB typ.
- excellent phase and amplitude unbalance

Applications

- electronic attenuator

Attenuator/Switch Electrical Specifications

FREQUENCY (MHz)	INSERTION LOSS (dB) ±20 mA	MAX. INPUT PWR (dBm) ±20 mA	IN-OUT ISOLATION (dB) 0 mA						BI-PHASE X (±20 mA) Typ.						
			L		M		U		ΔAMP (dB)		Phase (deg.) deviation from 180°				
IN	CON	Mid-Band m	Total Range	1 dB compr.	no damage	Typ.	Min.	Typ.	Min.	Typ.	Min.	m	Total Range	m	Total Range
2-400	DC-0.05	1.4 2.0 1.6 3.0	20*	25	65	45	45	33	35	25	0.1	0.1	1.0	2.0	

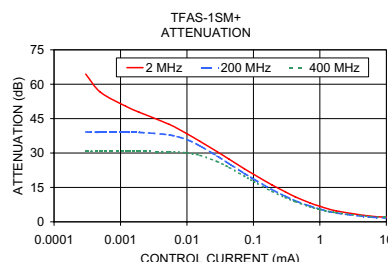
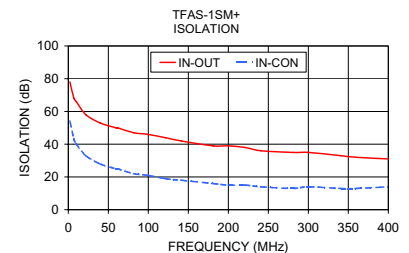
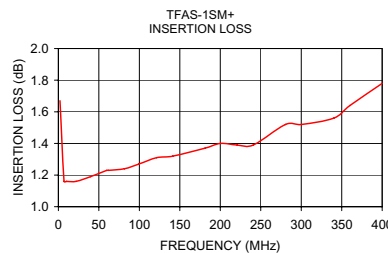
L = low range [f_L to $10 f_L$] M = mid range [$10 f_L$ to $f_U/2$] U = upper range [$f_U/2$ to f_U] m = [$2 f_L$ to $f_U/2$]

* 15 dBm from 2-10 MHz.

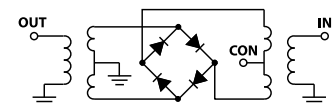
Performance specifications apply for input power up to 10 dB below stated 1 dB compression.

Typical Performance Data

Freq. (MHz)	I. Loss (dB) at 20mA	±Control		20mA Isolation (dB) (in-out)	20mA Isolation (dB) (in-con)	Input R. Loss (dB)	Control Current (mA)	Attenuation (dB)			Phase Δ ref at 15mA Ctrl			Input VSWR			
		ΔAMP (dB)	ΔPhase (deg.)					2 MHz	200 MHz	400 MHz	2 MHz	200 MHz	400 MHz	2 MHz	200 MHz	400 MHz	
\bar{x}	σ	\bar{x}	\bar{x}	\bar{x}	\bar{x}	\bar{x}											
2.0	1.67	0.000	0.01	179.9	78	54	18.1	0.0000	72.7	39.0	30.6	27.2	-87.7	-95.3	7.7	7.2	4.4
7.0	1.16	0.001	0.00	180.0	68	43	15.4	0.0003	64.4	39.2	30.7	22.2	-86.0	-94.6	7.7	7.2	4.4
10.0	1.16	0.001	0.00	180.0	66	40	27.6	0.0005	56.5	39.0	30.8	28.6	-84.3	-93.7	7.6	7.2	4.4
21.9	1.16	0.001	0.00	180.0	58	33	31.0	0.0012	50.4	39.0	30.7	17.6	-80.5	-92.0	7.6	7.2	4.4
39.8	1.19	0.001	0.00	180.1	53	28	31.9	0.0019	47.8	39.0	30.7	14.1	-77.4	-90.3	7.5	7.2	4.4
59.7	1.23	0.001	0.00	180.1	50	25	32.1	0.0054	42.5	37.9	30.6	8.2	-56.2	-79.9	7.4	7.0	4.3
61.7	1.23	0.001	0.00	180.1	50	25	32.1	0.0100	38.4	35.8	30.1	7.6	-37.3	-67.6	7.2	6.9	4.3
81.6	1.24	0.001	0.00	180.2	47	22	32.2	0.0157	35.1	33.1	29.0	8.8	-25.3	-55.1	7.1	6.7	4.2
99.5	1.27	0.001	0.00	180.2	46	21	32.3	0.0284	30.6	28.7	26.3	8.8	-12.8	-37.6	6.7	6.3	4.0
121.4	1.31	0.001	0.01	180.3	44	19	32.4	0.0433	27.3	25.3	23.7	9.2	-7.2	-26.9	6.3	5.9	3.8
141.3	1.32	0.001	0.01	180.4	42	18	32.4	0.0722	23.2	21.2	20.0	9.3	-3.1	-17.7	5.6	5.3	3.5
181.1	1.37	0.001	0.01	180.6	39	16	32.2	0.1012	20.7	18.6	17.6	9.0	-1.4	-13.2	5.2	4.9	3.3
200.0	1.40	0.001	0.01	180.6	39	15	32.0	0.1898	16.1	14.1	13.3	8.2	0.4	-8.0	4.1	3.9	2.8
220.9	1.39	0.001	0.01	180.8	38	15	31.6	0.3008	13.1	11.2	10.6	7.4	0.9	-5.5	3.4	3.2	2.4
240.8	1.39	0.001	0.01	180.9	36	14	30.3	0.4259	10.9	9.2	8.8	6.7	1.1	-4.2	2.9	2.7	2.1
280.6	1.52	0.001	0.05	181.1	35	13	26.6	0.7017	8.3	6.9	6.6	5.4	1.1	-2.8	2.2	2.1	1.7
300.5	1.52	0.001	0.04	181.1	35	14	24.8	0.9968	6.8	5.6	5.4	4.4	0.9	-2.1	1.9	1.8	1.5
340.3	1.56	0.001	0.03	181.4	33	13	21.4	1.7486	4.8	3.9	4.0	3.0	0.7	-1.3	1.5	1.5	1.3
360.2	1.64	0.002	0.06	181.6	32	13	19.8	5.6920	2.5	2.1	2.3	0.9	0.2	-0.3	1.2	1.1	1.2
400.0	1.78	0.003	0.09	181.7	31	14	17.1	15.1258	1.8	1.5	1.8	0.0	0.0	0.1	1.3	1.1	1.3



electrical schematic



For detailed performance specs & shipping online see web site

Mini-Circuits
ISO 9001 ISO 14001 AS 9100 CERTIFIED
The Design Engineers Search Engine Provides ACTUAL Data Instantly at minicircuits.com

P.O. Box 350166, Brooklyn, New York 11235-0003 (718) 934-4500 Fax (718) 934-4661

Notes: 1. Performance and quality attributes and conditions not expressly stated in this specification sheet are intended to be excluded and do not form a part of this specification sheet. 2. Electrical specifications and performance data contained herein are based on Mini-Circuit's applicable established test performance criteria and measurement instructions. 3. The parts covered by this specification sheet are subject to Mini-Circuits standard limited warranty and terms and conditions (collectively, "Standard Terms"); Purchasers of this part are entitled to the rights and benefits contained therein. For a full statement of the Standard Terms and the exclusive rights and remedies thereunder, please visit Mini-Circuits' website at www.minicircuits.com/MCLStore/terms.jsp.

REV. C
M126372
TFAS-1SM
WP/TD/CP/AM
100215