

# Surface Mount Power Splitter/Combiner

## TCP-2-33+

2 Way-0° 50Ω 1000 to 3000 MHz



CASE STYLE: DB714  
PRICE: \$1.99 ea. QTY. (25)

+ RoHS compliant in accordance with EU Directive (2002/95/EC)

The +Suffix has been added in order to identify RoHS Compliance. See our web site for RoHS Compliance methodologies and qualifications.

### Maximum Ratings

Operating Temperature	-40°C to 85°C
Storage Temperature	-55°C to 100°C
Power Input (as a splitter)	0.5W max.

Permanent damage may occur if any of these limits are exceeded.

### Pin Connections

SUM PORT	2,5,6
PORT 1	3
PORT 2	4
GROUND	1
EXT. RESISTOR 200Ω	3,4

### Features

- low insertion, 0.8 dB typ.
- excellent amplitude unbalance, 0.3 dB typ.
- very good phase unbalance, 1.0 deg. typ.
- external resistor required
- aqueous washable
- leads for excellent solderability
- low cost

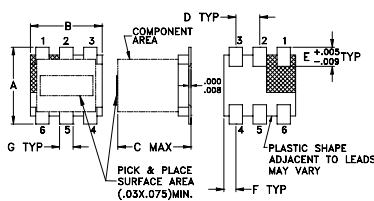
### Applications

- cellular
- PCN
- GPS

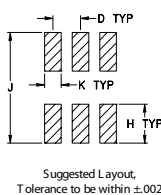
### Electrical Specifications

FREQ. RANGE (MHz)	ISOLATION (dB)		INSERTION LOSS (dB) ABOVE 3.0 dB		PHASE UNBALANCE (Degrees)	AMPLITUDE UNBALANCE (dB)
	Typ.	Min	Typ.	Max.	Max.	Max.
$f_L$ - $f_U$						
1000-3000	18	15	0.8	1.9	5.0	0.9

### Outline Drawing



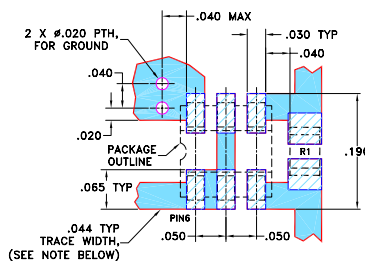
### PCB Land Pattern



### Outline Dimensions (inch/mm)

A	B	C	D	E	F				
.160	.150	.160	.050	.040	.025				
4.06	3.81	4.06	1.27	1.02	0.64				
G	H	J	K			wt			
.028	.065	.190	.030			grams			
0.71	1.65	4.83	0.76			0.15			

### Demo Board MCL P/N: TB-464+ Suggested PCB Layout (PL-008)



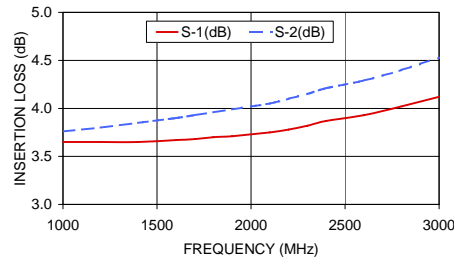
RESISTOR R1: 475 ± 1% Ohm, 0805 SIZE

- NOTES: 1. TRACE WIDTH IS SHOWN FOR ROGERS R04350B WITH DIELECTRIC THICKNESS 0.020" ± 0.0015"; COPPER: 1/2 OZ. EACH SIDE. FOR OTHER MATERIALS TRACE WIDTH MAY NEED TO BE MODIFIED.
2. BOTTOM SIDE OF THE PCB IS CONTINUOUS GROUND PLANE.
- DENOTES PCB COPPER LAYOUT WITH SMOBC (SOLDER MASK OVER BARE COPPER)
  - DENOTES COPPER LAND PATTERN FREE OF SOLDER MASK

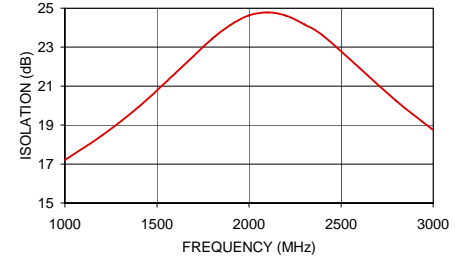
### Typical Performance Data

Frequency (MHz)	Insertion Loss (dB)		Amplitude Unbalance (dB)	Isolation (dB)	Phase Unbalance (deg.)	VSWR S	VSWR 1	VSWR 2
	S-1	S-2						
1000.00	3.65	3.76	0.11	17.21	0.35	1.89	1.42	1.44
1200.00	3.65	3.80	0.15	18.46	0.37	1.85	1.47	1.49
1400.00	3.65	3.85	0.20	19.93	0.41	1.81	1.51	1.54
1600.00	3.67	3.90	0.23	21.66	0.50	1.76	1.56	1.59
1700.00	3.68	3.93	0.25	22.55	0.53	1.74	1.58	1.61
1800.00	3.70	3.96	0.26	23.43	0.59	1.73	1.61	1.64
1900.00	3.71	3.99	0.28	24.14	0.65	1.71	1.63	1.67
2000.00	3.73	4.02	0.29	24.63	0.74	1.69	1.66	1.70
2100.00	3.75	4.05	0.30	24.78	0.82	1.67	1.69	1.73
2200.00	3.78	4.10	0.31	24.62	0.91	1.67	1.73	1.76
2300.00	3.82	4.15	0.32	24.17	0.97	1.66	1.76	1.79
2400.00	3.87	4.21	0.34	23.60	1.16	1.66	1.80	1.84
2600.00	3.93	4.29	0.35	21.94	1.27	1.68	1.88	1.89
2800.00	4.02	4.40	0.38	20.24	1.45	1.72	1.94	1.96
3000.00	4.12	4.53	0.41	18.75	1.73	1.76	2.00	2.00

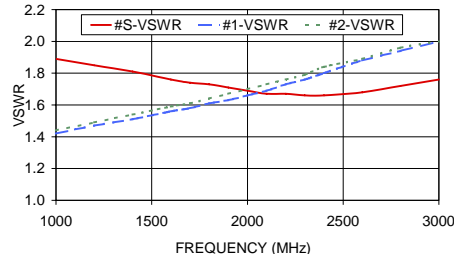
TCP-2-33+  
INSERTION LOSS



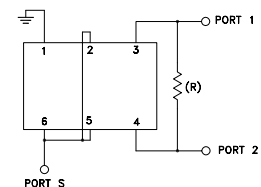
TCP-2-33+  
ISOLATION



TCP-2-33+  
VSWR



### electrical schematic



MODEL	R (Ohm)
TCP-2-25	475
TCP-2-33	200

For detailed performance specs & shopping online see web site

**Mini-Circuits®**  
ISO 9001 ISO 14001 AS 9100 CERTIFIED

P.O. Box 350166, Brooklyn, New York 11235-0003 (718) 934-4500 Fax (718) 332-4661 The Design Engineers Search Engine Provides ACTUAL Data Instantly at [minicircuits.com](http://minicircuits.com)

IF/RF MICROWAVE COMPONENTS

Notes: 1. Performance and quality attributes and conditions not expressly stated in this specification sheet are intended to be excluded and do not form a part of this specification sheet. 2. Electrical specifications and performance data contained herein are based on Mini-Circuit's applicable established test performance criteria and measurement instructions. 3. The parts covered by this specification sheet are subject to Mini-Circuits standard limited warranty and terms and conditions (collectively, "Standard Terms"); Purchasers of this part are entitled to the rights and benefits contained therein. For a full statement of the Standard Terms and the exclusive rights and remedies thereunder, please visit Mini-Circuits' website at [www.minicircuits.com/MCLStore/terms.jsp](http://www.minicircuits.com/MCLStore/terms.jsp).

REV. A  
M115986  
TCP-2-33+  
ED-13156  
DY/CP  
080211