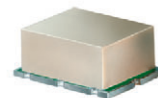


Surface Mount Frequency Mixer

SYM-30DLHW+ SYM-30DLHW

Level 10 (LO Power +10 dBm) 5 to 3000 MHz



Maximum Ratings

Operating Temperature	-40°C to 85°C
Storage Temperature	-55°C to 100°C
RF Power	50mW
IF Current	40mA

Permanent damage may occur if any of these limits are exceeded.

Pin Connections

LO	2
RF	1
IF	3
GROUND	4,5,6

Features

- wideband, 5 to 3000 MHz
- good L-R isolation, 36 dB typ.
- excellent L-I isolation, 45 dB typ.
- low conversion loss, 6.5 dB typ.

Applications

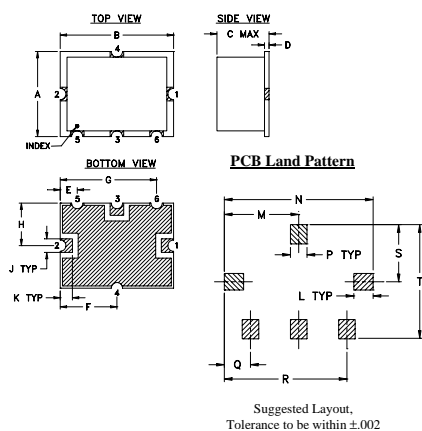
- CDMA
- GSM
- DCS
- PCN

CASE STYLE: TTT167
PRICE: \$8.95 ea. QTY (10-49)

**+ RoHS compliant in accordance
with EU Directive (2002/95/EC)**

The +Suffix identifies RoHS Compliance. See our web site for RoHS Compliance methodologies and qualifications.

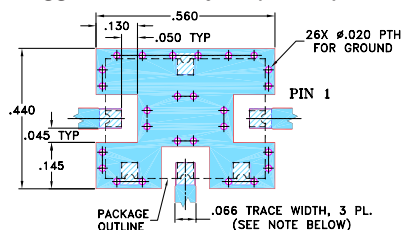
Outline Drawing



Outline Dimensions (inch/mm)

A	B	C	D	E	F	G	H	J	K
.38	.50	.23	.020	.075	.250	.425	.187	.050	.050
9.65	12.70	5.84	0.51	1.91	6.35	10.80	4.75	1.27	1.27
L	M	N	P	Q	R	S	T	wt.	
.070	.270	.540	.060	.095	.445	.208	.415	grams	
1.78	6.86	13.72	1.52	2.41	11.30	5.28	10.54	0.8	

Demo Board MCL P/N: TB-12 Suggested PCB Layout (PL-079)



Electrical Specifications

FREQUENCY (MHz)	IF	CONVERSION LOSS* (dB)				LO-RF ISOLATION (dB)			LO-IF ISOLATION (dB)			IP3* at center band (dBm)						
		Mid-Band m	Total Range Max.	L	M	U	L	M	U									
5-3000	5-1500	6.5	.15	8.4	9.2	36	28	37	29	33	23	41	32	45	37	47	31	19

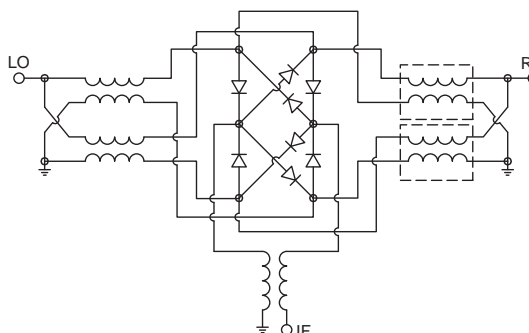
1 dB COMP: +5 dBm typ.
*IP3 at 800-900 MHz, and 1800-1900 MHz

L = low range [f_c to $10 f_c$]
M = mid range [$10 f_c$ to $f_c/2$]
U = upper range [$f_c/2$ to f_c]
m = mid band [$2 f_c$ to $f_c/2$]

Typical Performance Data

Frequency (MHz)	Conversion Loss (dB)	Isolation L-R (dB)	Isolation L-I (dB)	VSWR RF Port (:1)	VSWR LO Port (:1)	
						RF
5.10	35.11	6.58	35.88	38.87	1.13	1.62
100.10	130.11	6.53	36.17	43.33	1.08	1.61
221.15	251.16	6.50	36.39	43.27	1.13	1.60
434.31	464.32	6.51	36.54	43.55	1.26	1.57
647.47	677.48	6.40	36.89	43.37	1.43	1.53
860.63	890.64	6.55	37.21	44.80	1.62	1.50
1073.78	1103.79	6.73	38.11	47.46	1.76	1.46
1215.89	1245.90	6.36	38.74	50.49	1.80	1.44
1429.05	1459.06	6.22	38.31	55.18	1.69	1.37
1600.10	1630.11	6.19	37.88	58.14	1.50	1.33
1815.49	1845.50	6.36	35.43	54.55	1.29	1.22
2030.87	2060.88	6.80	32.79	49.03	1.27	1.13
2246.25	2276.26	7.17	31.15	51.13	1.32	1.04
2353.95	2383.96	7.26	30.54	54.00	1.27	1.01
2461.64	2491.65	7.28	30.28	53.61	1.17	1.07
2569.33	2599.34	7.27	30.13	51.62	1.03	1.15
2677.02	2707.03	7.33	30.10	48.05	1.13	1.24
2784.72	2814.73	7.43	30.14	46.47	1.29	1.33
2892.41	2922.42	7.53	30.39	43.08	1.45	1.43
3000.10	3030.11	7.67	32.41	40.55	1.57	1.51

Electrical Schematic



Mini-Circuits
ISO 9001 ISO 14001 AS 9100 CERTIFIED

For detailed performance specs & shopping online see web site

P.O. Box 350166, Brooklyn, New York 11235-0003 (718) 934-4500 Fax (718) 332-4661 The Design Engineers Search Engine Provides ACTUAL Data Instantly at minicircuits.com

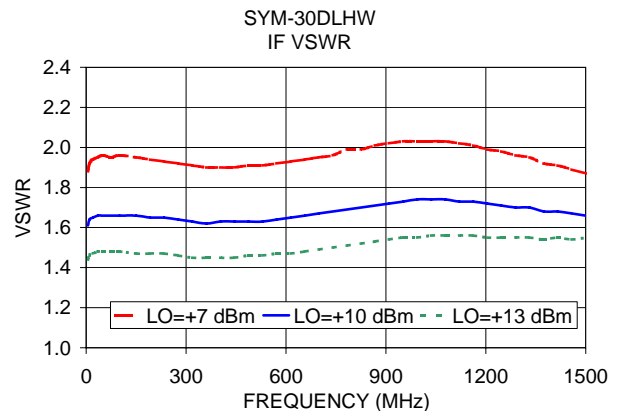
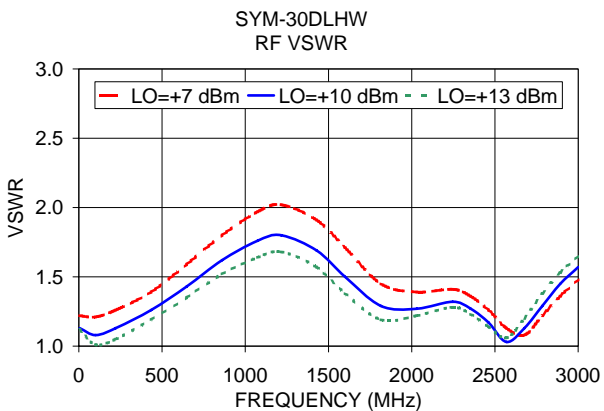
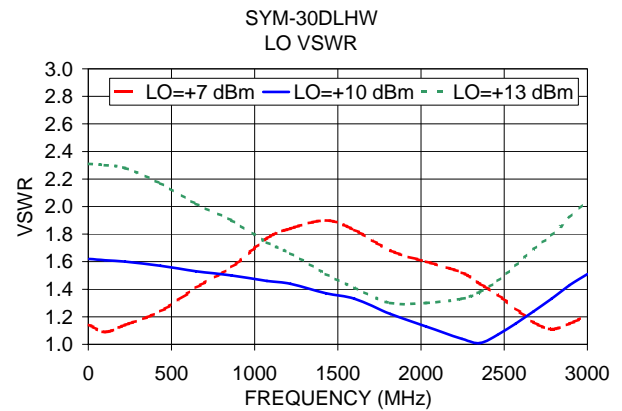
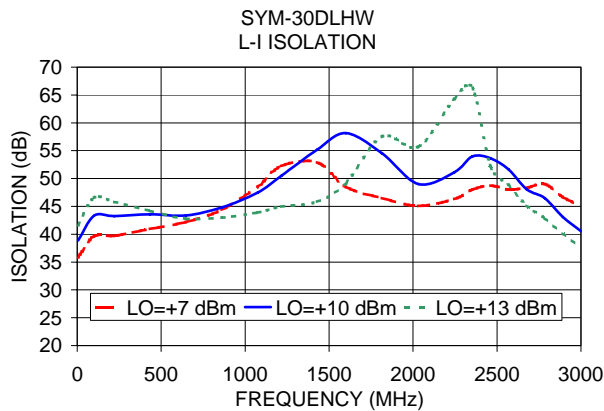
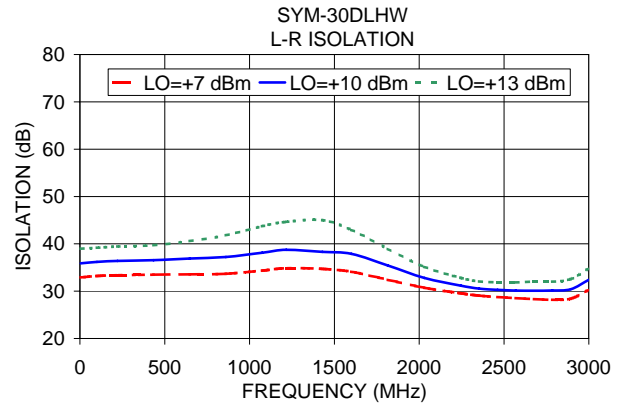
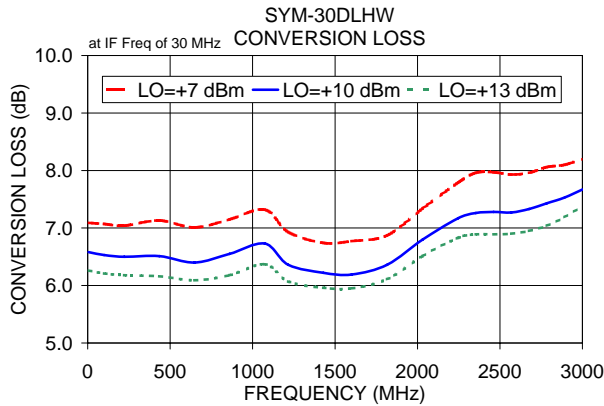
IF/RF MICROWAVE COMPONENTS

Notes: 1. Performance and quality attributes and conditions not expressly stated in this specification sheet are intended to be excluded and do not form a part of this specification sheet. 2. Electrical specifications and performance data contained herein are based on Mini-Circuit's applicable established test performance criteria and measurement instructions. 3. The parts covered by this specification sheet are subject to Mini-Circuit's standard limited warranty and terms and conditions (collectively, "Standard Terms"); Purchasers of this part are entitled to the rights and benefits contained therein. For a full statement of the Standard Terms and the exclusive rights and remedies thereunder, please visit Mini-Circuit's website at www.minicircuits.com/MCLStore/terms.jsp.

REV. C
M112207
SYM-30DLHW
DJ/TD/AM
091006
Page 1 of 2

SYM-30DLHW+ SYM-30DLHW

Performance Charts



ISO 9001 ISO 14001 AS 9100 CERTIFIED

P.O. Box 350166, Brooklyn, New York 11235-0003 (718) 934-4500 Fax (718) 332-4661

The Design Engineers Search Engine



Provides ACTUAL Data Instantly at minicircuits.com

IF/RF MICROWAVE COMPONENTS

For detailed performance specs
& shopping online see web site

Notes: 1. Performance and quality attributes and conditions not expressly stated in this specification sheet are intended to be excluded and do not form a part of this specification sheet. 2. Electrical specifications and performance data contained herein are based on Mini-Circuit's applicable established test performance criteria and measurement instructions. 3. The parts covered by this specification sheet are subject to Mini-Circuits standard limited warranty and terms and conditions (collectively, "Standard Terms"); Purchasers of this part are entitled to the rights and benefits contained therein. For a full statement of the Standard Terms and the exclusive rights and remedies thereunder, please visit Mini-Circuits' website at www.minicircuits.com/MCLStore/terms.jsp.