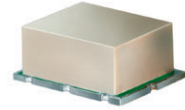


Surface Mount Attenuator/Switch

50Ω Bi-Phase 600 to 1000 MHz

SYAS-860+ SYAS-860



CASE STYLE: TTT166
PRICE: \$15.95 ea. QTY. (1-9)

+ RoHS compliant in accordance with EU Directive (2002/95/EC)

The +Suffix identifies RoHS Compliance. See our web site for RoHS Compliance methodologies and qualifications.

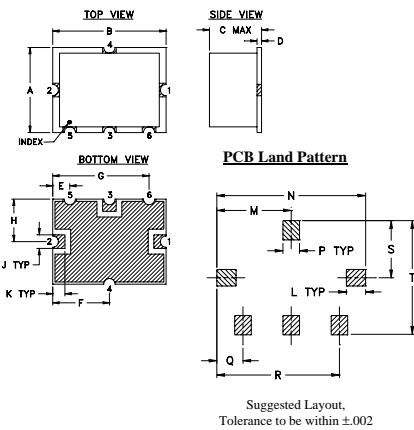
Maximum Ratings

Operating Temperature	-40°C to 85°C
Storage Temperature	-55°C to 100°C
Control Current	30mA
Permanent damage may occur if any of these limits are exceeded.	

Pin Connections

INPUT	1
OUTPUT	2
CONTROL	3
GROUND	4,5,6

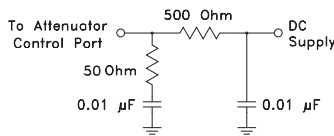
Outline Drawing



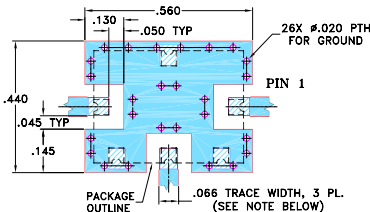
Outline Dimensions (inch/mm)

A	B	C	D	E	F	G	H	J	K	L	M	N	P	Q	R	S	T	wt.
.38	.50	.15	.020	.075	.250	.425	.187	.050	.050	.070	.270	.540	.060	.095	.445	.208	.415	grams
9.65	12.70	3.81	0.51	1.91	6.35	10.80	4.75	1.27	1.27	1.78	6.86	13.72	1.52	2.41	11.30	5.28	10.54	0.8

suggested control port biasing configuration



Demo Board MCL P/N: TB-12 Suggested PCB Layout (PL-079)



- NOTE: 1. TRACE WIDTH IS SHOWN FOR ROGERS RO4350B WITH DIELECTRIC THICKNESS .030" ± .002"; COPPER: 1/2 OZ. EACH SIDE. FOR OTHER MATERIALS TRACE WIDTH MAY NEED TO BE MODIFIED.
2. GROUND PAD SHALL BE FREE OF SOLDER MASK IF REQUIRED FOR SOLDERING.
3. BOTTOM SIDE OF THE PCB IS CONTINUOUS GROUND PLANE.
- DENOTES PCB COPPER LAYOUT WITH SMOBC (SOLDER MASK OVER BARE COPPER), SEE NOTE 2.
 - ▨ DENOTES COPPER LAND PATTERN FREE OF SOLDER MASK

P.O. Box 350166, Brooklyn, New York 11235-0003 (718) 934-4500 Fax (718) 332-4661 The Design Engineers Search Engine

Features

- wideband 600 to 1000 MHz

Applications

- bi-phase modulator

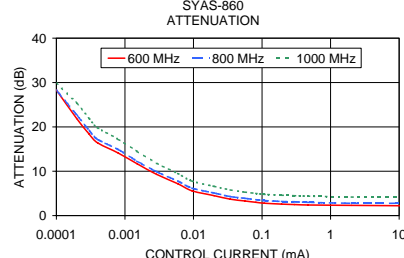
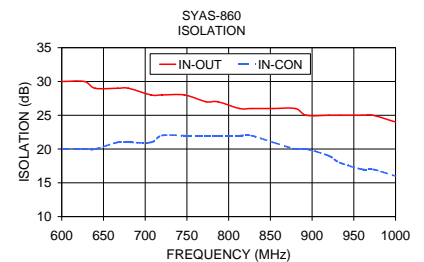
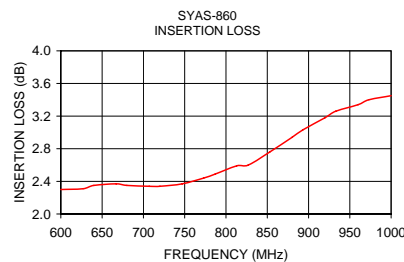
Attenuator/Switch Electrical Specifications

FREQUENCY (MHz)	INSERTION LOSS (dB) ±20 mA	MAX. INPUT PWR (dBm) ±20 mA	IN-OUT ISOLATION (dB) 0 mA		BI-PHASE X̄ (±20 mA) Typ.	
			IN	CON	Δ AMP (dB)	Phase (deg.) deviation from 180°
600-1000	DC-0.05	Total Range Typ. Max.	1 dB compr.	no damage	Typ. Min.	Total Range
		2.7 5.7	14	25	25 18	0.5 4.0

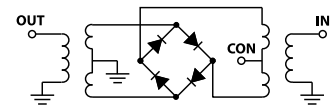
Performance specifications apply for input power up to 10 dB below stated 1 dB compression.

Typical Performance Data

Freq. (MHz)	I. Loss (dB) at 20mA	±Control ΔAMP (dB)	20mA ΔPhase (deg.)	Isolation (dB)		Input R. Loss (dB)	Control Current (mA)	Attenuation (dB)			Phase Δ ref at 15mA Ctrl			Input VSWR			
				(in-out)	(in-con)			600 MHz	800 MHz	1000 MHz	600 MHz	800 MHz	1000 MHz	600 MHz	800 MHz	1000 MHz	
600	2.30	0.015	0.07	182.1	30	20	10.8	0.0000	35.3	29.9	28.6	-60.9	-101.2	-133.3	2.9	2.3	3.1
627	2.31	0.013	0.06	182.4	30	20	11.2	0.0001	28.3	28.3	29.9	11.7	-34.3	-80.9	2.9	2.3	3.0
640	2.35	0.011	0.06	182.4	29	20	11.3	0.0002	21.8	22.6	25.3	14.5	-18.8	-51.0	2.7	2.2	2.9
667	2.37	0.007	0.06	182.6	29	21	11.4	0.0003	18.4	19.2	21.9	11.1	-16.0	-41.8	2.5	2.1	2.7
680	2.35	0.005	0.07	182.8	29	21	11.4	0.0004	16.4	17.2	19.8	9.9	-13.7	-36.0	2.4	2.0	2.6
707	2.34	0.005	0.08	182.7	28	21	11.2	0.0008	14.1	14.9	17.2	9.4	-10.4	-28.8	2.2	1.8	2.4
720	2.34	0.007	0.10	182.9	28	22	11.1	0.0015	11.7	12.3	14.5	8.8	-7.2	-21.8	1.9	1.7	2.3
747	2.37	0.008	0.13	183.0	28	22	10.7	0.0029	9.3	9.9	11.8	7.8	-4.8	-15.9	1.7	1.5	2.2
773	2.44	0.009	0.16	183.2	27	22	10.2	0.0059	7.2	7.8	9.5	6.1	-3.3	-11.3	1.4	1.4	2.2
787	2.49	0.011	0.19	183.2	27	22	10.0	0.0095	5.6	6.2	7.8	4.4	-2.3	-7.9	1.2	1.4	2.3
813	2.59	0.014	0.20	183.3	26	22	9.5	0.0200	4.5	5.1	6.6	3.1	-1.7	-5.1	1.2	1.5	2.6
827	2.60	0.018	0.24	183.6	26	22	9.2	0.0344	3.7	4.3	5.8	2.0	-1.2	-3.8	1.3	1.7	2.9
853	2.76	0.021	0.26	183.7	26	21	8.6	0.0559	3.3	3.9	5.3	1.3	-1.0	-2.7	1.4	1.8	3.2
880	2.94	0.032	0.33	183.8	26	20	8.1	0.0814	3.0	3.6	5.0	0.8	-0.9	-2.0	1.5	1.9	3.4
893	3.03	0.037	0.35	183.8	25	20	7.9	0.1072	2.8	3.4	4.8	0.7	-0.9	-1.7	1.5	1.9	3.6
920	3.18	0.040	0.40	183.9	25	19	7.4	0.1926	2.6	3.2	4.6	0.3	-0.7	-1.1	1.6	2.0	3.8
933	3.26	0.047	0.43	183.9	25	18	7.2	0.2959	2.5	3.1	4.5	0.1	-0.6	-0.8	1.6	2.1	3.9
960	3.34	0.049	0.48	183.8	25	17	6.7	0.4662	2.4	3.0	4.4	0.0	-0.5	-0.5	1.7	2.1	4.0
973	3.40	0.051	0.49	183.8	25	17	6.6	2.0106	2.3	2.8	4.2	0.0	-0.3	-0.2	1.7	2.2	4.2
1000	3.45	0.050	0.49	183.9	24	16	6.2	15.0980	2.2	2.8	4.1	0.0	-0.1	0.1	1.7	2.2	4.3



electrical schematic



For detailed performance specs & shipping online see web site

Mini-Circuits®
ISO 9001 ISO 14001 AS 9100 CERTIFIED
The Design Engineers Search Engine Provides ACTUAL Data Instantly at minicircuits.com

Notes: 1. Performance and quality attributes and conditions not expressly stated in this specification sheet are intended to be excluded and do not form a part of this specification sheet. 2. Electrical specifications and performance data contained herein are based on Mini-Circuit's applicable established test performance criteria and measurement instructions. 3. The parts covered by this specification sheet are subject to Mini-Circuits standard limited warranty and terms and conditions (collectively, "Standard Terms"); Purchasers of this part are entitled to the rights and benefits contained therein. For a full statement of the Standard Terms and the exclusive rights and remedies thereunder, please visit Mini-Circuits' website at www.minicircuits.com/MCLStore/terms.jsp.

REV. B
M111708
SYAS-860
WP/TD/AM
090728