

# Low Pass Filter

## SXLP-95+

50Ω DC to 95 MHz

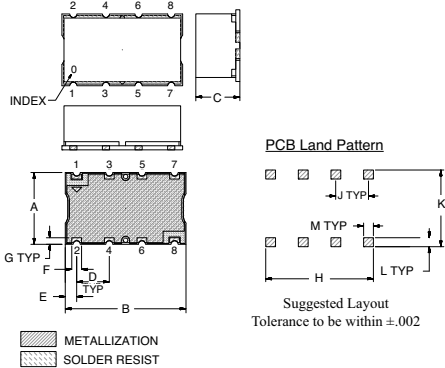
### Maximum Ratings

Operating Temperature	-40°C to 85°C
Storage Temperature	-55°C to 100°C
RF Power Input	0.5W Max.

### Pin Connections

INPUT	1
OUTPUT	8
GROUND	2, 3, 4, 5, 6, 7

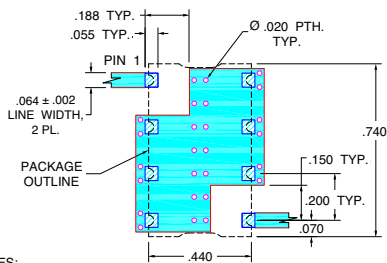
### Outline Drawing



### Outline Dimensions (inch/mm)

A	B	C	D	E	F	
.440	.740	.270	.200	0.70	0.60	
11.18	18.80	6.86	5.08	1.78	1.52	
G	H	J	K	L	M	wt.
.040	.660	.200	.470	.055	.060	grams
1.02	16.76	5.08	11.94	1.40	1.52	3.0

### Demo Board MCL P/N: TB-368 Suggested PCB Layout (PL-230)

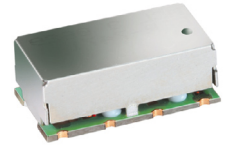


### Features

- High rejection
- Sharp cut-off
- Shielded package
- Aqueous washable
- Low cost

### Applications

- Defense communications
- Receivers / Transmitters
- Harmonic rejection



CASE STYLE: HF1139  
PRICE: \$11.45 ea. QTY (1-9)

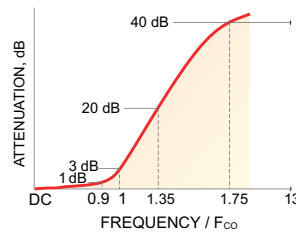
**+ RoHS compliant in accordance with EU Directive (2002/95/EC)**

The +Suffix has been added in order to identify RoHS Compliance. See our web site for RoHS Compliance methodologies and qualifications.

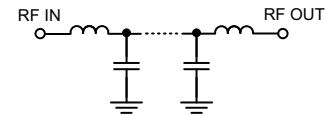
### Low Pass Filter Electrical Specifications (T<sub>AMB</sub> = 25°C)

PASSBAND (MHz)	f <sub>co</sub> , MHz Nom.	STOPBAND (MHz)		VSWR (:1)	
		(Loss > 20dB)	(Loss > 40dB)	Passband Typ.	Stopband Typ.
DC - 95	108	146 - 189	189 - 1400	1.7	18

### Typical Frequency Response

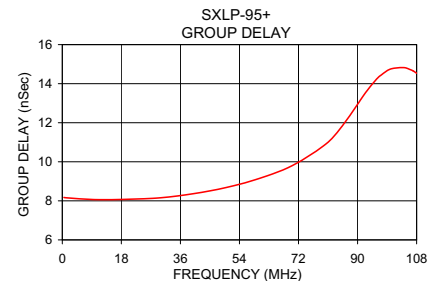
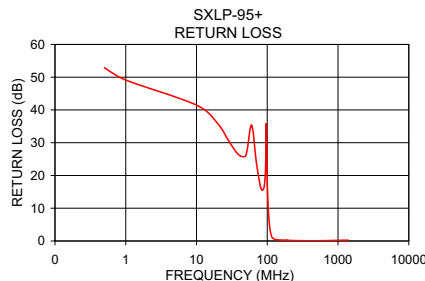
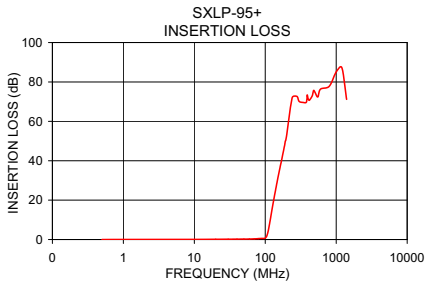


### Functional Schematic



### Typical Performance Data at 25°C

Frequency (MHz)	Insertion Loss (dB)		Return Loss (dB)	Frequency (MHz)	Group Delay (nSec)
	$\bar{x}$	$\sigma$			
0.5	0.02	0.01	52.90	0.5	8.17
1.0	0.04	0.00	49.11	10.0	8.06
10.0	0.08	0.00	41.48	20.0	8.08
30.0	0.15	0.01	29.77	30.0	8.16
70.0	0.31	0.01	24.07	40.0	8.37
95.0	0.53	0.01	23.82	50.0	8.68
100.0	0.79	0.03	18.19	60.0	9.14
104.0	1.57	0.10	8.88	70.0	9.80
108.0	3.30	0.21	4.43	80.0	10.87
115.0	8.14	0.47	1.48	85.0	11.76
120.0	12.00	0.61	0.84	90.0	12.95
146.0	28.80	0.94	0.31	91.0	13.19
189.0	48.66	1.53	0.20	92.0	13.44
200.0	53.38	2.00	0.18	93.0	13.66
400.0	72.49	2.86	0.07	94.0	13.88
800.0	80.12	3.70	0.15	95.0	14.08
1200.0	78.78	5.48	0.23	100.0	14.75
1400.0	71.99	2.28	0.26	108.0	14.53



P.O. Box 350166, Brooklyn, New York 11235-0003 (718) 934-4500 Fax (718) 332-4661 For detailed performance specs & shopping online see Mini-Circuits web site



The Design Engineers Search Engine Provides ACTUAL Data Instantly From MINI-CIRCUITS At: [www.minicircuits.com](http://www.minicircuits.com)

RF/IF MICROWAVE COMPONENTS



REV. OR  
M112220  
EDR-7488/1U  
SXLP-95+  
URJ/RAV  
071023  
page 1 of 1