

Low Pass Filter

SXLP-700+

50Ω DC to 700 MHz

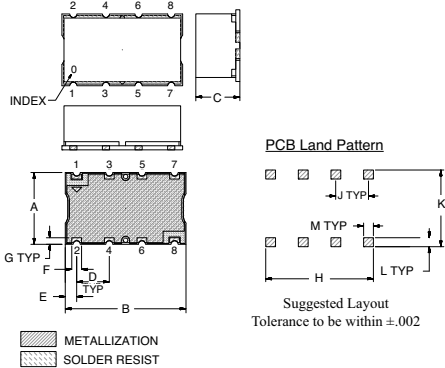
Maximum Ratings

Operating Temperature	-40°C to 85°C
Storage Temperature	-55°C to 100°C
RF Power Input	0.5W Max.

Pin Connections

INPUT	1
OUTPUT	8
GROUND	2, 3, 4, 5, 6, 7

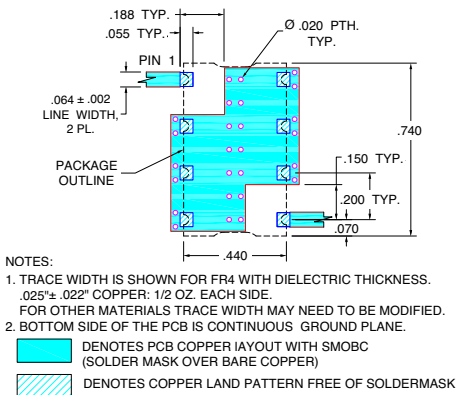
Outline Drawing



Outline Dimensions (inch/mm)

A	B	C	D	E	F	
.440	.740	.270	.200	0.70	0.60	
11.18	18.80	6.86	5.08	1.78	1.52	
G	H	J	K	L	M	wt.
.040	.660	.200	.470	.055	.060	grams
1.02	16.76	5.08	11.94	1.40	1.52	3.0

Demo Board MCL P/N: TB-368 Suggested PCB Layout (PL-230)

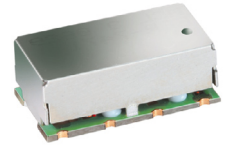


Features

- High rejection
- Sharp cut-off
- Shielded package
- Aqueous washable
- Low cost

Applications

- Defense communications
- Receivers / Transmitters
- Harmonic rejection



CASE STYLE: HF1139
PRICE: \$12.95 ea. QTY (1-9)

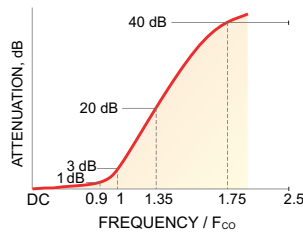
+ RoHS compliant in accordance with EU Directive (2002/95/EC)

The +Suffix has been added in order to identify RoHS Compliance. See our web site for RoHS Compliance methodologies and qualifications.

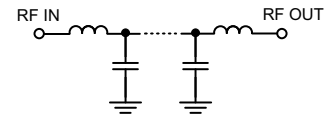
Low Pass Filter Electrical Specifications (T_{AMB} = 25°C)

PASSBAND (MHz)	f _{co} , MHz Nom.	STOPBAND (MHz)		VSWR (:1)	
		(Loss > 20dB)	(Loss > 40dB)	Passband Typ.	Stopband Typ.
DC - 700	770	1000 - 1300	1300 - 2000	1.7	18

Typical Frequency Response

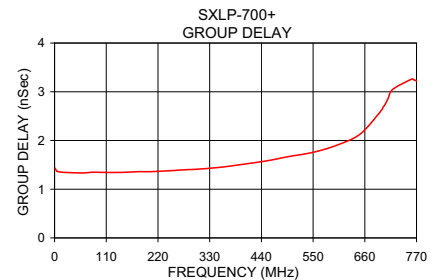
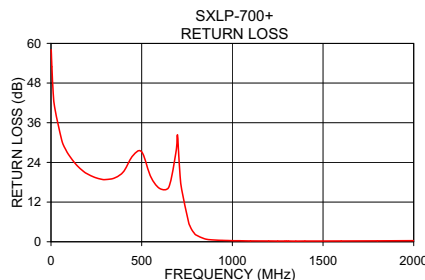
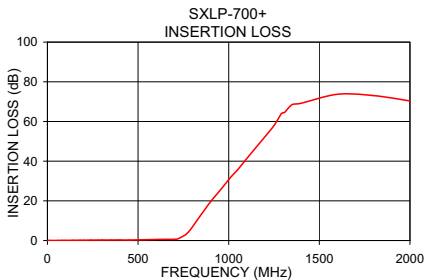


Functional Schematic



Typical Performance Data at 25°C

Frequency (MHz)	Insertion Loss (dB)		Return Loss (dB)	Frequency (MHz)	Group Delay (nSec)
	\bar{x}	σ			
1.0	0.01	0.00	58.08	1.0	1.43
60.0	0.07	0.00	30.60	10.0	1.36
100.0	0.09	0.00	26.13	20.0	1.35
200.0	0.17	0.01	20.53	60.0	1.33
500.0	0.32	0.01	27.19	80.0	1.35
700.0	0.62	0.01	30.67	100.0	1.35
720.0	0.79	0.04	16.08	140.0	1.34
760.0	2.53	0.15	5.58	200.0	1.36
770.0	3.28	0.17	4.29	240.0	1.38
800.0	6.51	0.25	2.04	300.0	1.41
850.0	13.04	0.26	0.84	350.0	1.45
900.0	19.36	0.29	0.53	400.0	1.51
1000.0	30.63	0.31	0.33	450.0	1.58
1100.0	41.29	0.35	0.26	500.0	1.67
1200.0	52.82	0.82	0.23	550.0	1.76
1300.0	64.91	2.02	0.22	600.0	1.90
1400.0	69.54	4.11	0.21	650.0	2.13
1600.0	70.63	4.33	0.24	700.0	2.70
1800.0	74.93	3.28	0.28	720.0	3.05
2000.0	71.30	1.17	0.33	770.0	3.22



P.O. Box 350166, Brooklyn, New York 11235-0003 (718) 934-4500 Fax (718) 332-4661 For detailed performance specs & shopping online see Mini-Circuits web site



The Design Engineers Search Engine Provides ACTUAL Data Instantly From MINI-CIRCUITS At: www.minicircuits.com

RF/IF MICROWAVE COMPONENTS

REV. OR
M112220
EDR-7485/1U
SXLP-700+
URJ/RAV
071023
page 1 of 1