

# Surface Mount Low Pass Filter

# SXLP-45+

50Ω DC to 45 MHz

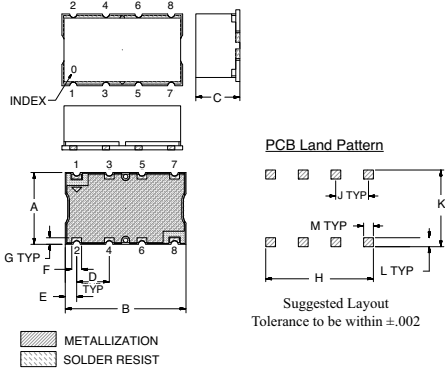
## Maximum Ratings

Operating Temperature	-40°C to 85°C
Storage Temperature	-55°C to 100°C
RF Power Input	0.5W Max.

## Pin Connections

INPUT	1
OUTPUT	8
GROUND	2, 3, 4, 5, 6, 7

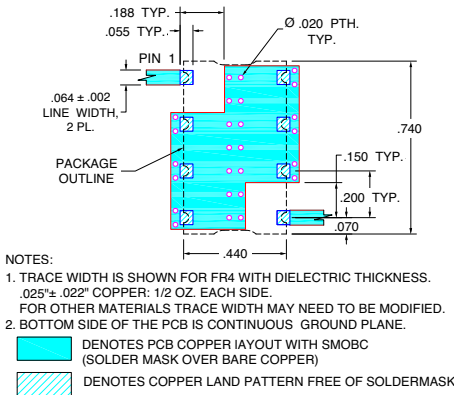
## Outline Drawing



## Outline Dimensions (inch/mm)

A	B	C	D	E	F	
.440	.740	.270	.200	0.70	0.60	
11.18	18.80	6.86	5.08	1.78	1.52	
G	H	J	K	L	M	wt.
.040	.660	.200	.470	.055	.060	grams
1.02	16.76	5.08	11.94	1.40	1.52	3.0

## Demo Board MCL P/N: TB-368 Suggested PCB Layout (PL-230)

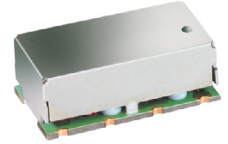


## Features

- High rejection
- Sharp cut-off
- Shielded package
- Aqueous washable
- Low cost

## Applications

- Defense communications
- Receivers / Transmitters
- Harmonic rejection



CASE STYLE: HF1139  
PRICE: \$11.45 ea. QTY (1-9)

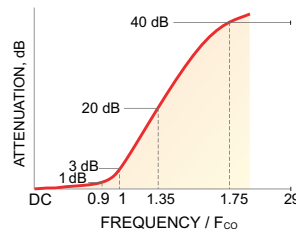
**+ RoHS compliant in accordance with EU Directive (2002/95/EC)**

The +Suffix has been added in order to identify RoHS Compliance. See our web site for RoHS Compliance methodologies and qualifications.

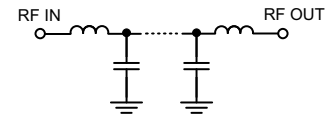
## Low Pass Filter Electrical Specifications (T<sub>AMB</sub> = 25°C)

PASSBAND (MHz)	f <sub>co</sub> , MHz Nom.	STOPBAND (MHz)		VSWR (:1)	
		(Loss > 20dB)	(Loss > 40dB)	Passband Typ.	Stopband Typ.
DC - 45	54	70 - 90	90 - 1600	1.7	18

## Typical Frequency Response

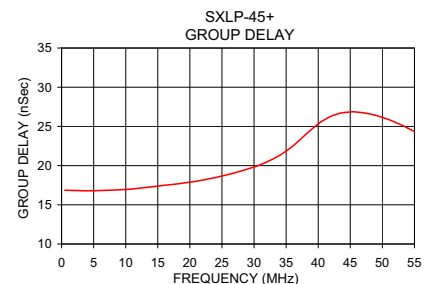
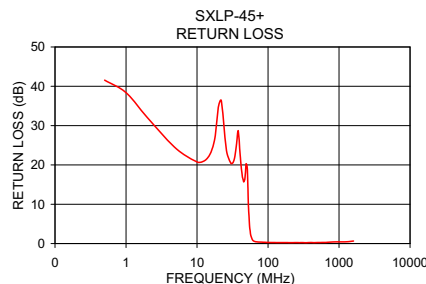
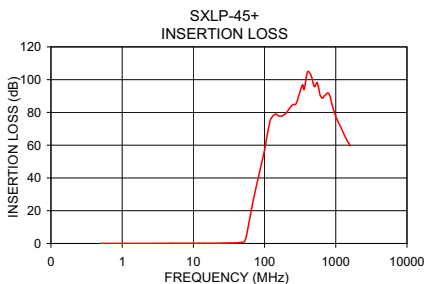


## Functional Schematic



## Typical Performance Data at 25°C

Frequency (MHz)	Insertion Loss (dB)		Return Loss (dB)	Frequency (MHz)	Group Delay (nSec)
	$\bar{x}$	$\sigma$			
0.5	0.03	0.00	41.56	0.5	16.86
5.0	0.09	0.01	24.26	2.0	16.83
26.0	0.20	0.01	23.64	10.0	16.96
42.0	0.42	0.01	19.21	12.0	17.11
45.0	0.56	0.02	15.99	14.0	17.29
45.0	0.56	0.02	15.99	16.0	17.49
51.0	0.94	0.06	19.09	18.0	17.67
53.0	1.80	0.16	9.35	20.0	17.88
54.0	2.79	0.23	6.34	22.0	18.16
57.0	7.02	0.34	2.20	26.0	18.87
60.0	12.29	0.34	1.02	32.0	20.47
70.0	27.17	0.28	0.43	34.0	21.32
90.0	48.22	0.34	0.32	36.0	22.47
100.0	56.89	0.56	0.28	38.0	23.92
200.0	82.06	2.63	0.24	40.0	25.33
400.0	100.39	4.06	0.26	42.0	26.31
600.0	93.18	2.34	0.29	45.0	26.84
1000.0	82.80	4.51	0.44	49.0	26.40
1200.0	73.70	2.94	0.43	54.0	26.76
1600.0	63.66	2.85	0.65	55.0	24.35



**Mini-Circuits®**  
ISO 9001 ISO 14001 CERTIFIED

ALL NEW  
**minicircuits.com**

P.O. Box 350166, Brooklyn, New York 11235-0003 (718) 934-4500 Fax (718) 332-4661 For detailed performance specs & shopping online see Mini-Circuits web site



The Design Engineers Search Engine Provides ACTUAL Data Instantly From MINI-CIRCUITS At: [www.minicircuits.com](http://www.minicircuits.com)

RF/IF MICROWAVE COMPONENTS

REV. OR  
M112220  
EDR-7481/1U  
SXLP-45+  
URJ/RAV  
071023  
Page 1 of 1