

Low Pass Filter

SXLP-40+

50Ω DC to 40 MHz

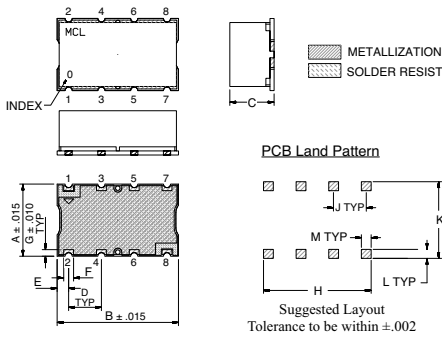
Maximum Ratings

Operating Temperature	-40°C to 85°C
Storage Temperature	-55°C to 100°C
RF Power Input	0.5W Max.

Pin Connections

INPUT	1
OUTPUT	8
GROUND	2, 3, 4, 5, 6, 7

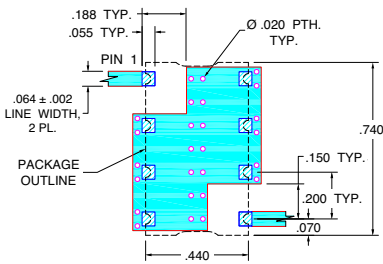
Outline Drawing



Outline Dimensions (inch/mm)

A	B	C	D	E	F	G	H	J	K	L	M	wt. grams
.440	.740	.27	.200	.07	.060	.040	.660	.200	.470	.055	.060	3.0
11.18	18.80	6.86	5.08	1.78	1.52	1.02	16.76	5.08	11.94	1.40	1.52	

Demo Board MCL P/N: TB-368 Suggested PCB Layout (PL-230)

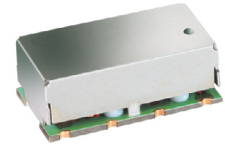


Features

- High rejection
- Sharp cut-off
- Shielded package
- Aqueous washable
- Low cost

Applications

- Cable System (Video & Data)
- Defense communications
- Receivers / Transmitters
- Harmonic rejection



CASE STYLE: HF1139
PRICE: \$8.95 ea. QTY (1-9)

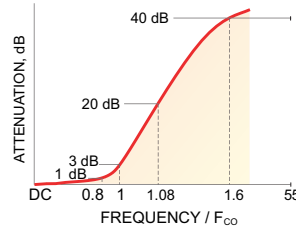
+ RoHS compliant in accordance with EU Directive (2002/95/EC)

The +Suffix has been added in order to identify RoHS Compliance. See our web site for RoHS Compliance methodologies and qualifications.

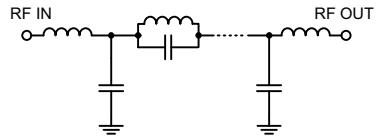
Low Pass Filter Electrical Specifications (T_{AMB} = 25°C)

PASSBAND (MHz)	f _{co} , MHz Nom.	STOPBAND (MHz)		VSWR (:1)	
		(Loss > 20dB)	(Loss > 40dB)	Passband Typ.	Stopband Typ.
DC - 40	50	54 - 80	80 - 2750	1.3	18

Typical Frequency Response

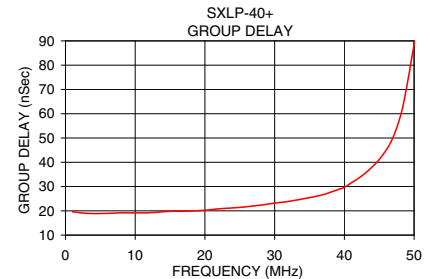
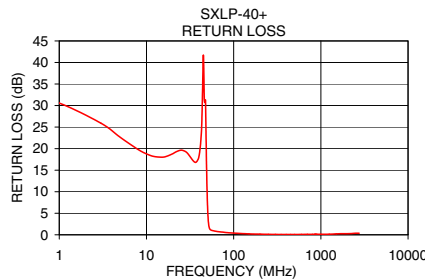
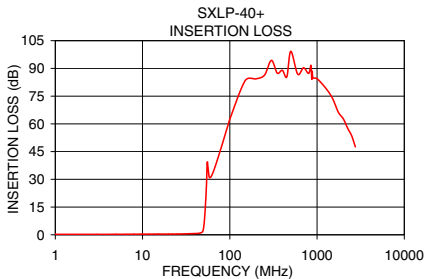


Functional Schematic



Typical Performance Data at 25°C

Frequency (MHz)	Insertion Loss (dB)		Return Loss (dB)	Frequency (MHz)	Group Delay (nSec)
	\bar{x}	σ			
0.5	0.24	0.01	31.53	1.0	19.59
5.0	0.29	0.01	22.64	3.0	18.97
25.0	0.42	0.01	19.65	5.0	18.91
35.0	0.59	0.02	17.00	10.0	19.17
40.0	0.67	0.03	18.24	12.0	19.22
49.0	1.89	0.09	14.95	15.0	19.77
50.0	3.45	0.29	7.60	17.0	19.85
50.4	4.71	0.41	5.78	20.0	20.23
51.0	7.08	0.60	3.74	22.0	20.83
52.0	12.33	0.83	2.02	25.0	21.43
53.0	18.80	0.97	1.43	30.0	23.18
54.0	27.01	1.19	1.20	35.0	25.45
80.0	47.43	0.45	0.55	37.0	26.71
100.0	62.54	0.44	0.39	39.0	28.69
200.0	84.33	3.23	0.15	40.0	29.68
600.0	86.91	3.37	0.08	41.0	31.55
1000.0	84.47	3.62	0.12	45.0	41.14
2000.0	62.71	0.64	0.25	48.0	58.69
2750.0	47.57	0.24	0.36	50.0	88.49



P.O. Box 350166, Brooklyn, New York 11235-0003 (718) 934-4500 Fax (718) 332-4661 For detailed performance specs & shopping online see Mini-Circuits web site



The Design Engineers Search Engine Provides ACTUAL Data Instantly From MINI-CIRCUITS At: www.minicircuits.com

RF/IF MICROWAVE COMPONENTS

REV. OR
M118418
EDR-8893AUF1
SXLP-40+
URJ/RAV
080702
Page 1 of 1