

Low Pass Filter

SXLP-4.7+

50Ω DC to 4.7 MHz

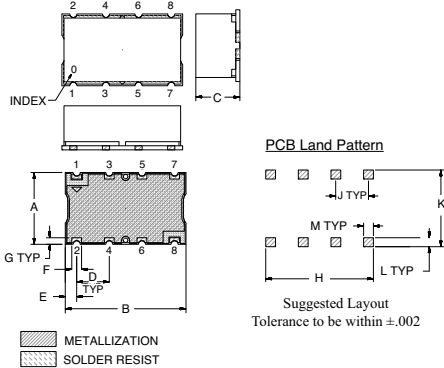
Maximum Ratings

Operating Temperature	-40°C to 85°C
Storage Temperature	-55°C to 100°C
RF Power Input	0.5W Max.

Pin Connections

INPUT	1
OUTPUT	8
GROUND	2, 3, 4, 5, 6, 7

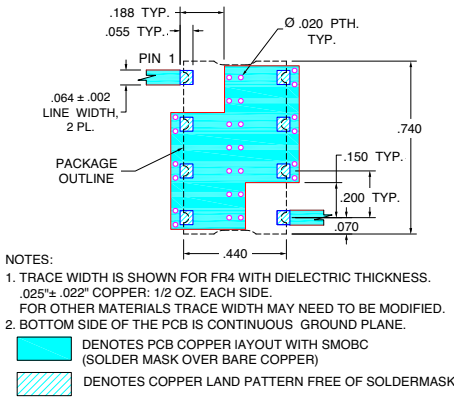
Outline Drawing



Outline Dimensions (inch/mm)

A	B	C	D	E	F	
.440	.740	.270	.200	0.70	0.60	
11.18	18.80	6.86	5.08	1.78	1.52	
G	H	J	K	L	M	wt.
.040	.660	.200	.470	.055	.060	grams
1.02	16.76	5.08	11.94	1.40	1.52	3.0

Demo Board MCL P/N: TB-368 Suggested PCB Layout (PL-230)

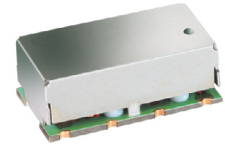


Features

- High rejection
- Sharp cut-off
- Shielded package
- Aqueous washable
- Low cost

Applications

- Defense communications
- Receivers / Transmitters
- Harmonic rejection



CASE STYLE: HF1139
PRICE: \$ 8.95 ea. QTY (1-9)

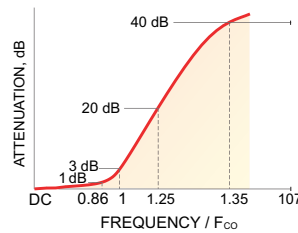
+ RoHS compliant in accordance with EU Directive (2002/95/EC)

The +Suffix has been added in order to identify RoHS Compliance. See our web site for RoHS Compliance methodologies and qualifications.

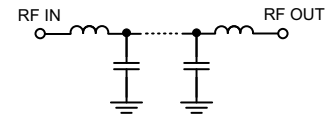
Low Pass Filter Electrical Specifications (T_{AMB} = 25°C)

PASSBAND (MHz)	f _{co} , MHz Nom.	STOPBAND (MHz)		VSWR (:1)	
		(Loss > 20dB)	(Loss > 40dB)	Passband Typ.	Stopband Typ.
DC - 4.7	5.6	6.6 - 7.4	7.4 - 600	1.25	18

Typical Frequency Response

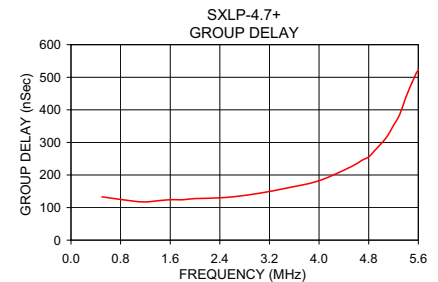
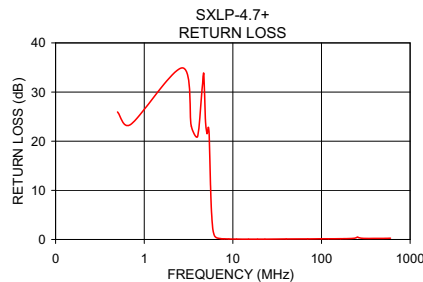
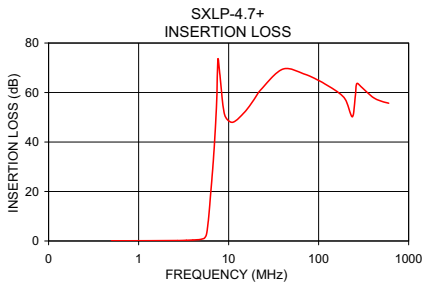


Functional Schematic



Typical Performance Data at 25°C

Frequency (MHz)	Insertion Loss (dB)		Return Loss (dB)	Frequency (MHz)	Group Delay (nSec)
	\bar{x}	σ			
0.5	0.08	0.01	25.94	0.5	132.84
2.7	0.20	0.01	34.92	1.2	117.19
2.7	0.20	0.01	34.92	1.4	120.85
4.5	0.49	0.02	30.78	1.6	124.16
4.7	0.56	0.02	33.74	1.8	124.15
5.3	1.02	0.04	22.84	2.0	127.50
5.6	2.09	0.32	10.91	2.5	131.07
5.8	4.70	0.75	4.32	3.0	142.83
6.0	9.43	1.03	1.65	3.5	160.70
6.2	15.17	1.09	0.78	4.0	182.44
6.6	27.16	1.10	0.33	4.5	223.68
7.4	57.30	1.96	0.16	4.7	245.95
15.0	52.02	0.24	0.07	4.8	255.31
23.0	61.33	0.16	0.07	5.0	295.98
40.0	69.54	0.59	0.10	5.2	352.27
100.0	65.17	0.41	0.14	5.3	385.52
200.0	57.06	0.25	0.18	5.4	438.20
400.0	58.40	0.26	0.22	5.5	484.24
600.0	55.96	0.30	0.27	5.6	521.62



P.O. Box 350166, Brooklyn, New York 11235-0003 (718) 934-4500 Fax (718) 332-4661 For detailed performance specs & shopping online see Mini-Circuits web site



The Design Engineers Search Engine Provides ACTUAL Data Instantly From MINI-CIRCUITS At: www.minicircuits.com

RF/IF MICROWAVE COMPONENTS

REV. OR
M112220
EDR-7478/1U
SXLP-4.7+
URJ/RAV
071129
Page 1 of 1