

# Low Pass Filter

## SXLP-190+

50Ω DC to 190 MHz

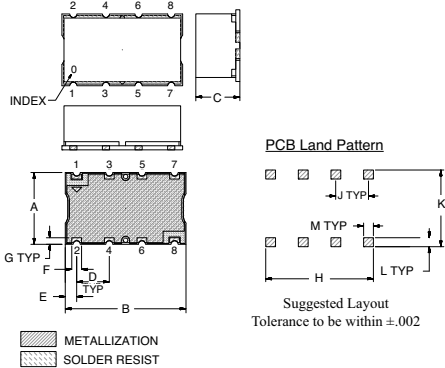
### Maximum Ratings

Operating Temperature	-40°C to 85°C
Storage Temperature	-55°C to 100°C
RF Power Input	0.5W Max.

### Pin Connections

INPUT	1
OUTPUT	8
GROUND	2, 3, 4, 5, 6, 7

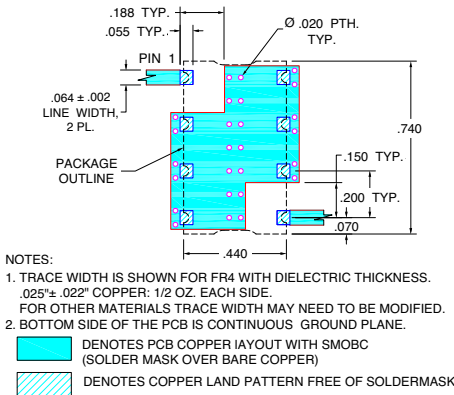
### Outline Drawing



### Outline Dimensions (inch/mm)

A	B	C	D	E	F	
.440	.740	.270	.200	0.70	0.60	
11.18	18.80	6.86	5.08	1.78	1.52	
G	H	J	K	L	M	wt.
.040	.660	.200	.470	.055	.060	grams
1.02	16.76	5.08	11.94	1.40	1.52	3.0

### Demo Board MCL P/N: TB-368 Suggested PCB Layout (PL-230)

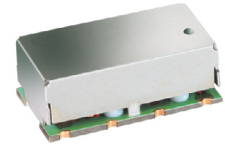


### Features

- High rejection
- Sharp cut-off
- Shielded package
- Aqueous washable
- Low cost

### Applications

- Defense communications
- Receivers / Transmitters
- Harmonic rejection



CASE STYLE: HF1139  
PRICE: \$11.45 ea. QTY (1-9)

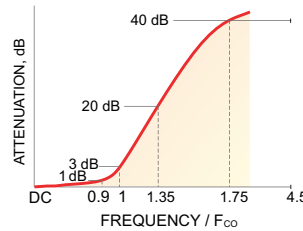
**+ RoHS compliant in accordance with EU Directive (2002/95/EC)**

The +Suffix has been added in order to identify RoHS Compliance. See our web site for RoHS Compliance methodologies and qualifications.

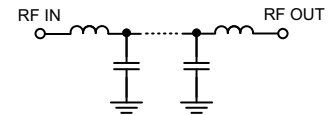
### Low Pass Filter Electrical Specifications (T<sub>AMB</sub> = 25°C)

PASSBAND (MHz)	f <sub>co</sub> , MHz Nom.	STOPBAND (MHz)		VSWR (:1)	
		(Loss > 20dB)	(Loss > 40dB)	Passband Typ.	Stopband Typ.
DC - 190	210	290 - 390	390 - 1000	1.4	18

### Typical Frequency Response

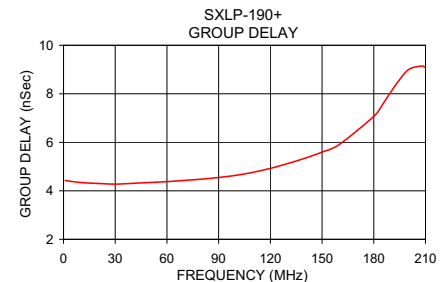
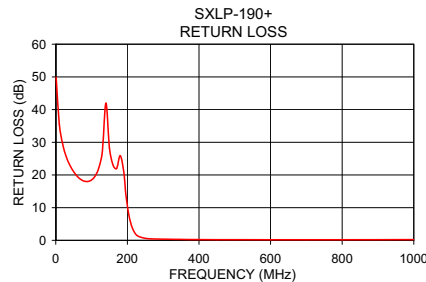
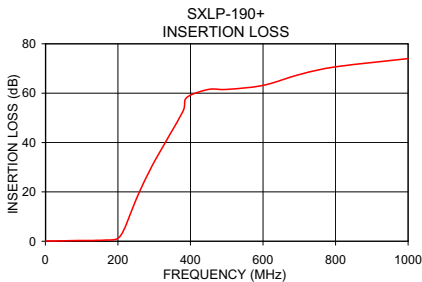


### Functional Schematic



### Typical Performance Data at 25°C

Frequency (MHz)	Insertion Loss (dB)		Return Loss (dB)	Frequency (MHz)	Group Delay (nSec)
	$\bar{x}$	$\sigma$			
1.0	0.04	0.01	49.88	1.0	4.42
20.0	0.08	0.01	29.15	10.0	4.34
50.0	0.17	0.01	21.01	20.0	4.30
120.0	0.29	0.01	22.07	30.0	4.28
140.0	0.33	0.00	42.01	50.0	4.34
190.0	0.63	0.01	20.93	60.0	4.38
200.0	1.17	0.03	10.55	80.0	4.48
210.0	2.79	0.09	5.05	90.0	4.55
220.0	5.74	0.15	2.39	100.0	4.64
230.0	9.45	0.22	1.28	110.0	4.76
250.0	16.95	0.26	0.61	120.0	4.92
290.0	29.35	0.34	0.38	130.0	5.12
390.0	55.75	2.14	0.23	140.0	5.34
500.0	65.57	4.10	0.19	150.0	5.60
600.0	68.15	5.42	0.18	160.0	5.91
700.0	75.50	5.06	0.17	180.0	7.07
800.0	71.08	3.29	0.18	190.0	8.08
1000.0	74.05	3.49	0.22	210.0	9.09



P.O. Box 350166, Brooklyn, New York 11235-0003 (718) 934-4500 Fax (718) 332-4661 For detailed performance specs & shopping online see Mini-Circuits web site



The Design Engineers Search Engine Provides ACTUAL Data Instantly From MINI-CIRCUITS At: [www.minicircuits.com](http://www.minicircuits.com)

RF/IF MICROWAVE COMPONENTS

REV. OR  
M112220  
EDR-7469/1U  
SXLP-190+  
URJ/RAV  
071023  
page 1 of 1