

Low Pass Filter

SXLP-10+

50Ω DC to 10 MHz

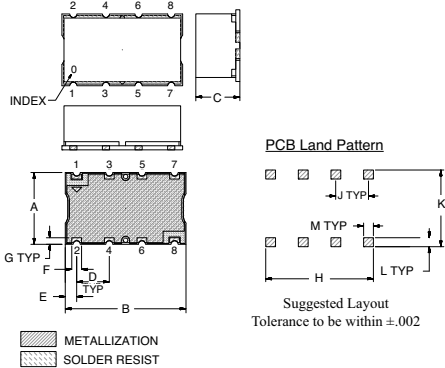
Maximum Ratings

Operating Temperature	-40°C to 85°C
Storage Temperature	-55°C to 100°C
RF Power Input	0.5W Max.

Pin Connections

INPUT	1
OUTPUT	8
GROUND	2, 3, 4, 5, 6, 7

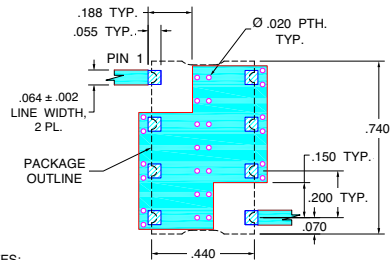
Outline Drawing



Outline Dimensions (inch/mm)

A	B	C	D	E	F	
.440	.740	.270	.200	0.70	0.60	
11.18	18.80	6.86	5.08	1.78	1.52	
G	H	J	K	L	M	wt.
.040	.660	.200	.470	.055	.060	grams
1.02	16.76	5.08	11.94	1.40	1.52	3.0

Demo Board MCL P/N: TB-368 Suggested PCB Layout (PL-230)



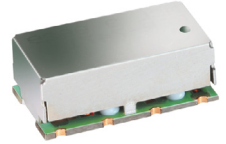
- NOTES:
- TRACE WIDTH IS SHOWN FOR FR4 WITH DIELECTRIC THICKNESS .025" ± .022" COPPER: 1/2 OZ. EACH SIDE. FOR OTHER MATERIALS TRACE WIDTH MAY NEED TO BE MODIFIED.
 - BOTTOM SIDE OF THE PCB IS CONTINUOUS GROUND PLANE.
- DENOTES PCB COPPER LAYOUT WITH SMOBC (SOLDER MASK OVER BARE COPPER)
 - DENOTES COPPER LAND PATTERN FREE OF SOLDERMASK

Features

- High rejection
- Sharp cut-off
- Shielded package
- Aqueous washable
- Low cost

Applications

- Defense communications
- Receivers / Transmitters
- Harmonic rejection



CASE STYLE: HF1139
PRICE: \$ 8.95 ea. QTY (1-9)

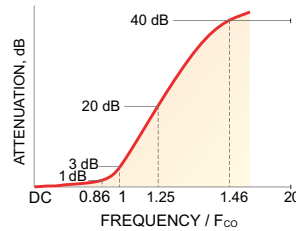
+ RoHS compliant in accordance with EU Directive (2002/95/EC)

The +Suffix has been added in order to identify RoHS Compliance. See our web site for RoHS Compliance methodologies and qualifications.

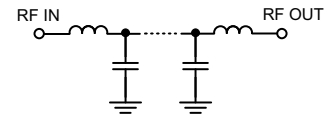
Low Pass Filter Electrical Specifications (T_{AMB} = 25°C)

PASSBAND (MHz)	f _{co} , MHz Nom.	STOPBAND (MHz)		VSWR (:1)	
		(Loss > 20dB)	(Loss > 40dB)	Passband Typ.	Stopband Typ.
DC - 10	11.2	14 - 16	16 - 230	1.2	18

Typical Frequency Response

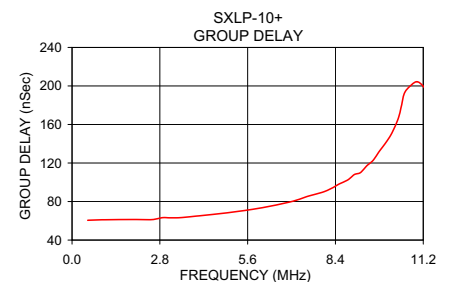
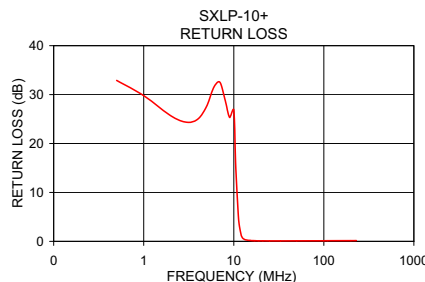
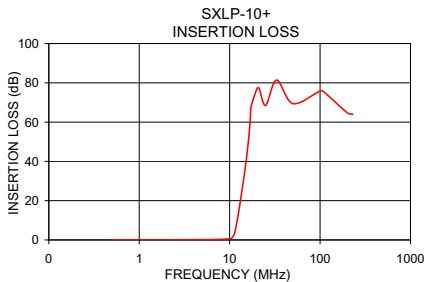


Functional Schematic



Typical Performance Data at 25°C

Frequency (MHz)	Insertion Loss (dB)		Return Loss (dB)	Frequency (MHz)	Group Delay (nSec)
	\bar{x}	σ			
0.5	0.03	0.00	32.90	0.5	60.52
2.0	0.07	0.00	25.67	2.5	61.12
5.0	0.15	0.01	27.63	2.7	62.00
8.0	0.29	0.01	28.96	2.9	63.30
10.0	0.58	0.02	26.84	3.1	63.10
10.5	0.95	0.07	15.52	3.3	63.12
11.0	2.14	0.19	7.72	3.5	63.40
11.2	3.05	0.26	5.59	4.0	65.03
11.7	6.53	0.44	2.34	5.0	68.54
12.4	13.07	0.57	0.81	6.0	73.24
14.0	28.71	0.68	0.26	7.5	85.27
16.0	49.92	1.04	0.15	8.0	89.81
20.0	77.84	4.07	0.10	8.3	94.14
30.0	74.45	1.46	0.09	8.5	97.89
100.0	75.56	2.51	0.12	9.0	107.94
120.0	72.40	2.09	0.13	9.6	122.71
140.0	69.23	1.51	0.13	10.0	140.89
160.0	66.85	1.18	0.14	10.5	172.46
200.0	64.18	0.83	0.15	11.0	200.44
230.0	63.37	0.87	0.16	11.2	204.40



P.O. Box 350166, Brooklyn, New York 11235-0003 (718) 934-4500 Fax (718) 332-4661 For detailed performance specs & shopping online see Mini-Circuits web site



The Design Engineers Search Engine Provides ACTUAL Data Instantly From MINI-CIRCUITS At: www.minicircuits.com

RF/IF MICROWAVE COMPONENTS

REV. OR
M112220
EDR-7465/1U
SXLP-10+
URJ/RAV
071023
page 1 of 1