

Surface Mount High Pass Filter

SXHP-2+

50Ω 2 to 400 MHz

The Big Deal

- Low insertion loss
- High rejection
- Miniature shielded package



CASE STYLE: HF1139

Product Overview

SXHP-2+ is a 50Ω high pass filter fabricated using SMT technology. This high pass filter covers from 2-400 MHz. This filter is built with high Q capacitors and wire wound inductors for superior performance. It has repeatable performance across lots and consistent performance across temperature.

Key Features

Feature	Advantages
Low insertion loss	Can be used in high performance applications.
Good rejection	This enables the filter to attenuate spurious signals and reject harmonics for broad frequency band.
Small size, 0.44" x 0.74" x 0.27"	The small surface mount package enables the SXHP-2+ to be used in compact designs.

Notes

- A. Performance and quality attributes and conditions not expressly stated in this specification document are intended to be excluded and do not form a part of this specification document.
B. Electrical specifications and performance data contained in this specification document are based on Mini-Circuit's applicable established test performance criteria and measurement instructions.
C. The parts covered by this specification document are subject to Mini-Circuits standard limited warranty and terms and conditions (collectively, "Standard Terms"); Purchasers of this part are entitled to the rights and benefits contained therein. For a full statement of the Standard Terms and the exclusive rights and remedies thereunder, please visit Mini-Circuits' website at www.minicircuits.com/MCLStore/terms.jsp



Surface Mount High Pass Filter

50Ω 2 to 400 MHz

SXHP-2+



CASE STYLE: HF1139

Features

- Low Insertion loss
- High Rejection
- Miniature shielded package

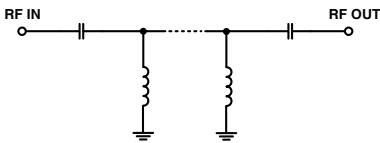
Electrical Specifications at 25°C

Parameter	F#	Frequency (MHz)	Min.	Typ.	Max.	Unit	
Stop Band	Rejection Loss	DC-F1	DC-1.3	20	37	-	dB
	VSWR	DC-F1	DC-1.3	-	20	-	:1
Pass Band	Insertion Loss	F2-F4	2-400	-	0.6	1.5	dB
	VSWR	F2-F3	2-200	-	1.3	1.43	:1
		F3-F4	200-400	-	1.3	-	:1

Applications

- Broadcasting
- Maritime mobile
- Radar applications

Functional Schematic



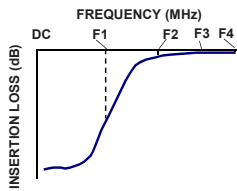
Maximum Ratings	
Operating Temperature	-40°C to 85°C
Storage Temperature	-55°C to 100°C
RF Power Input	0.5 W max.

Permanent damage may occur if any of these limits are exceeded.

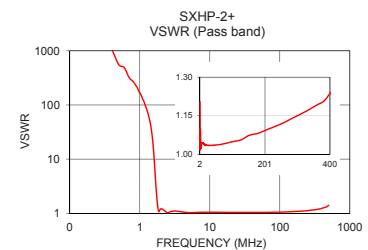
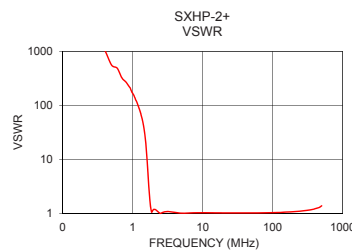
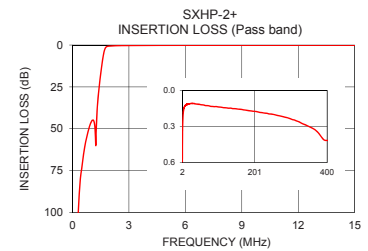
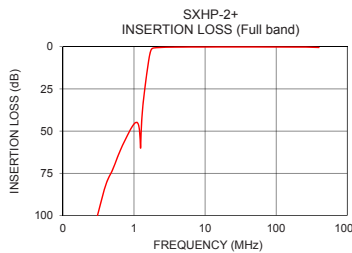
Typical Performance Data at 25°C

Frequency (MHz)	Insertion Loss (dB)	VSWR (:1)
0.30	101.47	1546.66
0.92	48.15	211.72
1.20	50.36	98.23
1.30	40.66	71.73
1.36	31.58	57.42
1.37	30.36	55.18
1.47	19.92	33.28
1.58	10.41	13.09
1.70	3.09	3.13
2.00	0.59	1.20
4.00	0.20	1.06
8.00	0.14	1.04
16.00	0.12	1.04
32.00	0.11	1.03
50.00	0.12	1.04
100.00	0.14	1.05
150.00	0.15	1.07
200.00	0.18	1.09
300.00	0.24	1.15
400.00	0.42	1.24

Typical Frequency Response



+RoHS Compliant
The +Suffix identifies RoHS Compliance. See our web site for RoHS Compliance methodologies and qualifications



Notes

- Performance and quality attributes and conditions not expressly stated in this specification document are intended to be excluded and do not form a part of this specification document.
- Electrical specifications and performance data contained in this specification document are based on Mini-Circuit's applicable established test performance criteria and measurement instructions.
- The parts covered by this specification document are subject to Mini-Circuits standard limited warranty and terms and conditions (collectively, "Standard Terms"); Purchasers of this part are entitled to the rights and benefits contained therein. For a full statement of the Standard Terms and the exclusive rights and remedies thereunder, please visit Mini-Circuits' website at www.minicircuits.com/MCLStore/terms.jsp

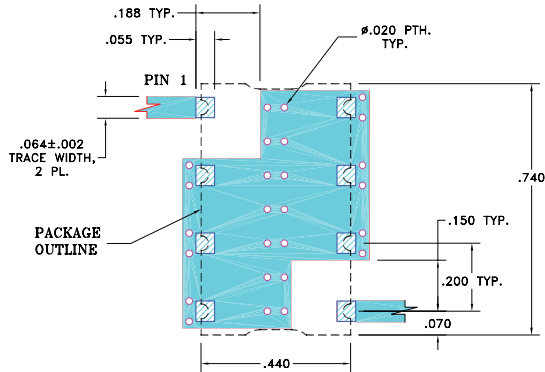


www.minicircuits.com P.O. Box 350166, Brooklyn, NY 11235-0003 (718) 934-4500 sales@minicircuits.com

Pad Connections

INPUT	1
OUTPUT	8
GROUND	2, 3, 4, 5, 6, 7

Demo Board MCL P/N: TB-368 Suggested PCB Layout (PL-230)

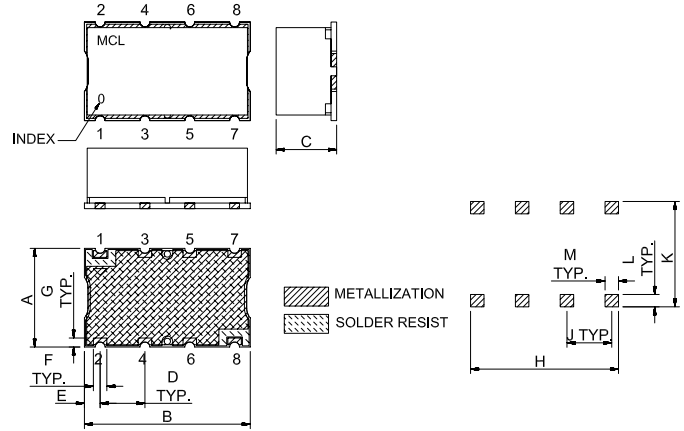


NOTE:

- TRACE WIDTH IS SHOWN FOR FR4 WITH DIELECTRIC THICKNESS: .025"±.002". COPPER: 1/2 OZ. EACH SIDE. FOR OTHER MATERIALS TRACE WIDTH MAY NEED TO BE MODIFIED.
- BOTTOM SIDE OF THE PCB IS CONTINUOUS GROUND PLANE.

- DENOTES PCB COPPER LAYOUT WITH SMOBC (SOLDER MASK OVER BARE COPPER)
- DENOTES COPPER LAND PATTERN FREE OF SOLDER MASK

Outline Drawing



Outline Dimensions (inch/mm)

A	B	C	D	E	F	G
.44	.74	.27	.200	.07	.060	.040
11.18	18.80	6.86	5.08	1.78	1.52	1.02
H	J	K	L	M	wt	
.660	.200	.470	.055	.060	grams	
16.76	5.08	11.94	1.40	1.52	3.0	

Notes

- Performance and quality attributes and conditions not expressly stated in this specification document are intended to be excluded and do not form a part of this specification document.
- Electrical specifications and performance data contained in this specification document are based on Mini-Circuit's applicable established test performance criteria and measurement instructions.
- The parts covered by this specification document are subject to Mini-Circuits standard limited warranty and terms and conditions (collectively, "Standard Terms"); Purchasers of this part are entitled to the rights and benefits contained therein. For a full statement of the Standard Terms and the exclusive rights and remedies thereunder, please visit Mini-Circuits' website at www.minicircuits.com/MCLStore/terms.jsp