

Surface Mount Bandpass Filter

SXBP-425+

50Ω 410 to 440 MHz

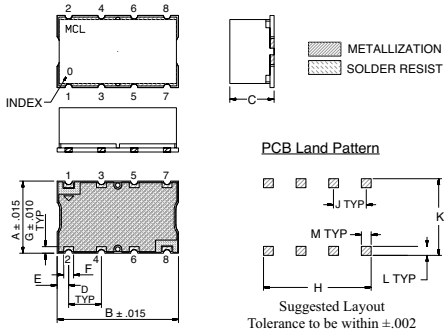
Maximum Ratings

Operating Temperature	-40°C to 85°C
Storage Temperature	-55°C to 100°C
RF Power Input	0.5W Max.

Pin Connections

INPUT	1
OUTPUT	8
GROUND	2, 3, 4, 5, 6, 7

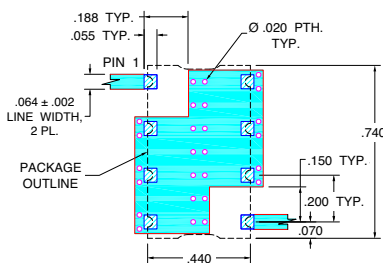
Outline Drawing



Outline Dimensions (inch/mm)

A	B	C	D	E	F	G	H	J	K	L	M	wt. grams
.440	.740	.27	.200	.07	.060	.040	.660	.200	.470	.055	.060	3.0
11.18	18.80	6.86	5.08	1.78	1.52	1.02	16.76	5.08	11.94	1.40	1.52	

Demo Board MCL P/N: TB-368 Suggested PCB Layout (PL-230)

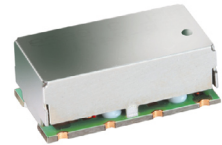


Features

- Linear Phase, up to ±6 deg Typ @ Fc ± 15 MHz
- Good VSWR, 1.3:1 Typ @ Passband
- High Rejection
- Shielded case
- Aqueous washable

Applications

- Industrial Microwave and RF
- Receivers / Transmitters
- Harmonic rejection



CASE STYLE: HF1139
PRICE: \$17.95 ea. QTY (1-9)

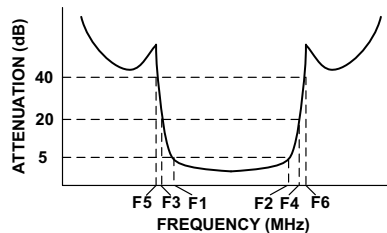
+ RoHS compliant in accordance with EU Directive (2002/95/EC)

The +Suffix has been added in order to identify RoHS Compliance. See our web site for RoHS Compliance methodologies and qualifications.

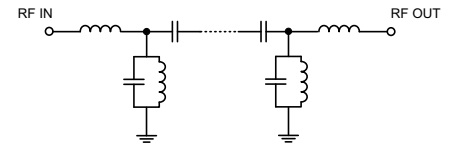
Bandpass Filter Electrical Specifications (T_{AMB} = 25°C)

CENTER FREQ. (MHz)	PASSBAND (MHz) (Loss < 5dB)	STOPBANDS (MHz)				MAXIMUM DEVIATION FROM LINEAR PHASE (deg.)	VSWR (:1)	
		Loss > 20dB		Loss > 40dB			Passband	Stopband
Fc	F1 - F2	F3	F4	F5	F6	Fc ± 15MHz	Typ. Max.	Typ.
425	410 - 440	385	470	360	510 - 2500	±11	1.3 1.7	20

Typical Frequency Response

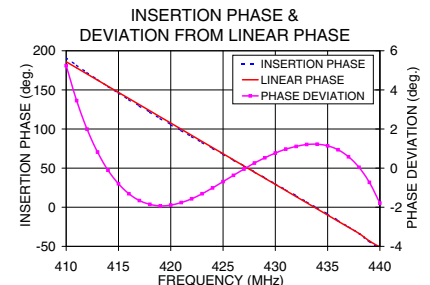
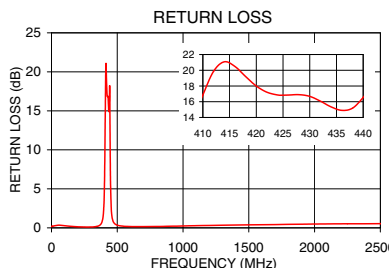


Functional Schematic



Typical Performance Data at 25°C

Frequency (MHz)	Insertion Loss (dB)		Return Loss (dB)	Frequency (MHz)	Deviation from Linear Phase (deg.)
	\bar{x}	σ			
0.5	81.76	3.40	0.17	410.0	5.24
100.0	68.09	3.05	0.28	412.0	1.99
360.0	47.06	0.36	0.27	414.0	-0.11
385.0	27.82	0.65	0.82	416.0	-1.31
395.0	16.90	1.00	1.90	418.0	-1.85
402.0	8.63	1.16	4.96	420.0	-1.89
406.0	5.40	0.97	9.68	422.0	-1.57
410.0	3.68	0.11	16.84	424.0	-1.01
425.0	2.91	0.07	16.83	425.0	-0.69
440.0	3.65	0.13	16.55	427.0	-0.05
445.0	5.32	0.42	12.75	429.0	0.53
450.0	9.56	0.74	4.75	430.0	0.77
460.0	19.96	0.67	1.39	432.0	1.11
470.0	28.48	0.54	0.78	434.0	1.22
510.0	49.71	0.45	0.29	436.0	0.94
1000.0	83.27	5.77	0.24	438.0	0.04
2000.0	54.71	2.24	0.49	439.0	-0.73
2500.0	50.52	1.55	0.54	440.0	-1.79



Mini-Circuits®
ISO 9001 ISO 14001 CERTIFIED

ALL NEW
minicircuits.com

P.O. Box 350166, Brooklyn, New York 11235-0003 (718) 934-4500 Fax (718) 332-4661 For detailed performance specs & shopping online see Mini-Circuits web site



The Design Engineers Search Engine Provides ACTUAL Data Instantly From MINI-CIRCUITS At: www.minicircuits.com

RF/IF MICROWAVE COMPONENTS

REV. OR
M119635
EDR-9256UF1
SXBP-425+
URJ/RAV
080919
Page 1 of 1