

# Bandpass Filter

## SXBP-35N+

50Ω 30 to 40 MHz

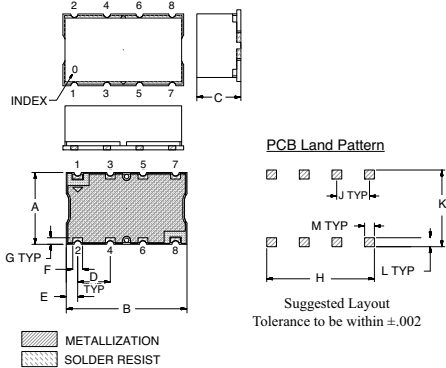
### Maximum Ratings

Operating Temperature	-40°C to 85°C
Storage Temperature	-55°C to 100°C
RF Power Input	0.5W Max.

### Pin Connections

INPUT	1
OUTPUT	8
GROUND	2, 3, 4, 5, 6, 7

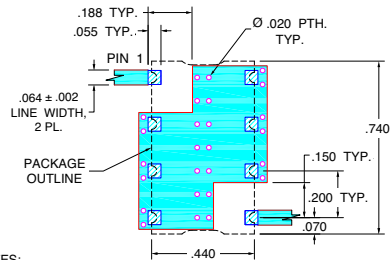
### Outline Drawing



### Outline Dimensions (inch/mm)

A	B	C	D	E	F	
.440	.740	.27	.200	.07	.060	
11.18	18.80	6.86	5.08	1.78	1.52	
G	H	J	K	L	M	wt.
.040	.660	.200	.470	.055	.060	grams
1.02	16.76	5.08	11.94	1.40	1.52	3.0

### Demo Board MCL P/N: TB-368 Suggested PCB Layout (PL-230)

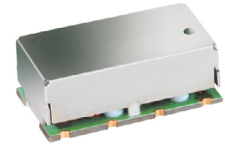


### Features

- Excellent rejection
- Good VSWR, 1.1:1 Typ @ Passband

### Applications

- FM Radio Rejection
- Receivers / Transmitters
- Professional Mobile Radio / Public Access Mobile Radio (PMR/ PAMR)



CASE STYLE: HF1139  
PRICE: \$15.95 ea. QTY (1-9)

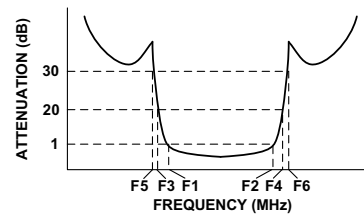
**+ RoHS compliant in accordance with EU Directive (2002/95/EC)**

The +Suffix has been added in order to identify RoHS Compliance. See our web site for RoHS Compliance methodologies and qualifications.

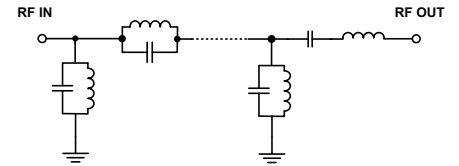
### Bandpass Filter Electrical Specifications (T<sub>AMB</sub> = 25°C)

CENTER FREQ. (MHz)	PASSBAND (MHz) (Loss < 1dB) F1 - F2	STOPBANDS (MHz)				VSWR (:1)	
		Loss > 20dB		Loss > 30dB		Passband Max.	Stopband Typ.
		F3	F4	F5	F6		
35	30 - 40	21	60	19	65 - 1350	1.5	18

### Typical Frequency Response

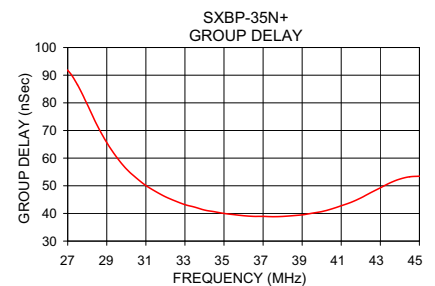
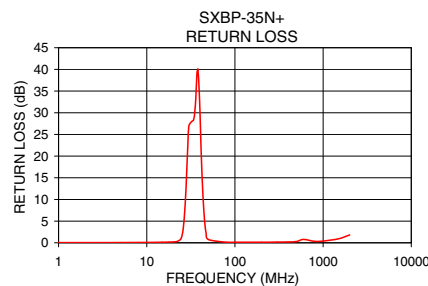
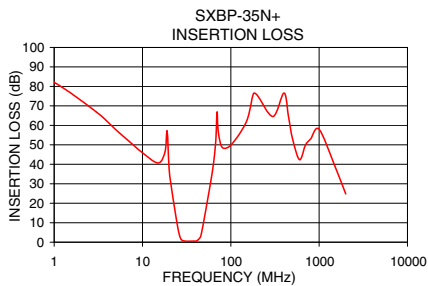


### Functional Schematic



### Typical Performance Data at 25°C

Frequency (MHz)	Insertion Loss (dB)		Return Loss (dB)	Frequency (MHz)	Group Delay (nSec)
	$\bar{x}$	$\sigma$			
1.0	82.11	0.27	0.04	27.0	91.70
19.0	57.19	1.77	0.17	28.0	79.45
21.0	29.79	0.24	0.23	29.0	65.64
23.0	17.86	0.30	0.42	30.0	56.11
25.0	7.98	0.43	1.52	31.0	50.11
26.0	4.23	0.44	3.50	32.0	46.02
27.0	1.98	0.32	7.49	33.0	43.18
30.0	0.60	0.05	26.89	34.0	41.24
35.0	0.52	0.02	30.12	35.0	40.01
40.0	0.64	0.04	31.03	36.0	39.17
44.0	1.59	0.27	8.65	37.0	38.94
46.0	3.83	0.56	3.67	38.0	38.92
48.0	7.66	0.70	1.54	39.0	39.48
51.0	14.31	0.67	0.57	40.0	40.67
60.0	32.50	0.62	0.19	41.0	42.78
65.0	43.63	0.84	0.16	42.0	45.62
500.0	53.02	0.17	0.30	43.0	49.26
1350.0	55.12	6.44	0.63	45.0	53.47



P.O. Box 350166, Brooklyn, New York 11235-0003 (718) 934-4500 Fax (718) 332-4661 For detailed performance specs & shopping online see Mini-Circuits web site



The Design Engineers Search Engine Provides ACTUAL Data Instantly From MINI-CIRCUITS At: [www.minicircuits.com](http://www.minicircuits.com)

RF/IF MICROWAVE COMPONENTS

REV. OR  
M112217  
EDR-7458U  
SXBP-35N+  
URJ/RAV  
080422  
Page 1 of 1