

Surface Mount Bandpass Filter

SXBP-1200+

50Ω 800 to 1800 MHz

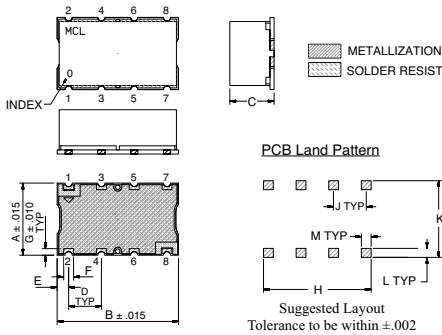
Maximum Ratings

Operating Temperature	-40°C to 85°C
Storage Temperature	-55°C to 100°C
RF Power Input	0.5W Max.

Pin Connections

INPUT	1
OUTPUT	8
GROUND	2, 3, 4, 5, 6, 7

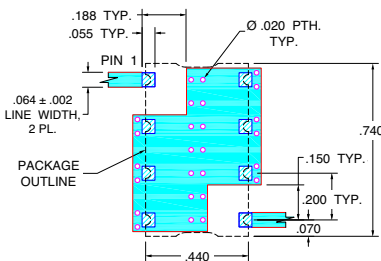
Outline Drawing



Outline Dimensions (inch/mm)

A	B	C	D	E	F	G	H	J	K	L	M	wt. grams
.440	.740	.19	.200	.07	.060	.040	.660	.200	.470	.055	.060	2.5
11.18	18.80	4.83	5.08	1.78	1.52	1.02	16.76	5.08	11.94	1.40	1.52	

Demo Board MCL P/N: TB-368 Suggested PCB Layout (PL-230)

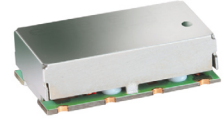


Features

- Wideband, 800 to 1800 MHz
- Flat Group Delay @ Passband, 1 nSec Typ
- Shielded case
- Aqueous washable

Applications

- Receivers / Transmitters
- Wireless communication systems
- Harmonic rejection



CASE STYLE: HF1317
PRICE: \$17.95 ea. QTY (1-9)

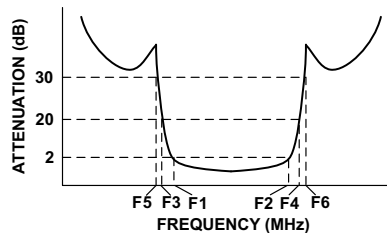
+ RoHS compliant in accordance with EU Directive (2002/95/EC)

The +suffix has been added in order to identify RoHS Compliance. See our web site for RoHS Compliance methodologies and qualifications.

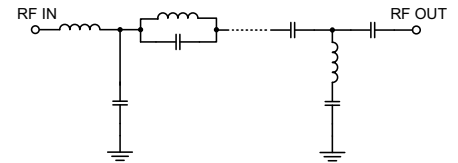
Bandpass Filter Electrical Specifications (T_{AMB} = 25°C)

CENTER FREQ. (MHz)	PASSBAND (MHz) (Loss < 2dB)	STOPBANDS (MHz)				VSWR (:1)		
		Loss > 20dB	Loss 30dB Typ.	Passband	Stopband	Typ.	Max.	Typ.
F _c	F ₁ - F ₂	F ₃	F ₄	F ₅	F ₆			
1200	800 - 1800	535	2220	530	2250 - 5000	1.5	2.1	20

Typical Frequency Response

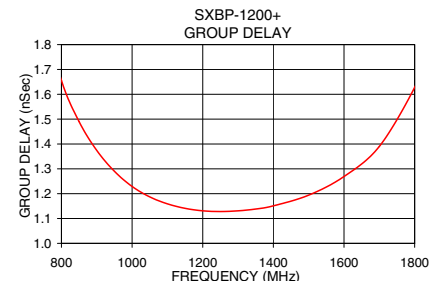
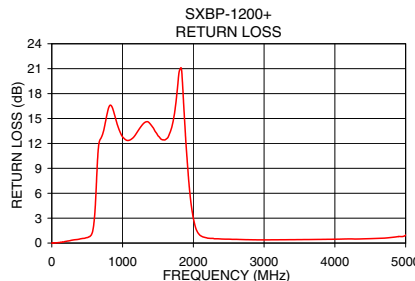
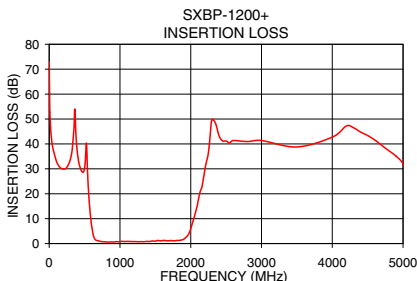


Functional Schematic



Typical Performance Data at 25°C

Frequency (MHz)	Insertion Loss (dB)		Return Loss (dB)	Frequency (MHz)	Group Delay (nSec)
	\bar{x}	σ			
1.0	72.93	0.47	0.00	800.0	1.66
530.0	38.97	2.80	0.49	850.0	1.49
535.0	34.49	2.93	0.51	900.0	1.37
570.0	15.37	0.93	0.88	950.0	1.29
600.0	7.18	0.56	2.18	1000.0	1.23
620.0	3.81	0.35	4.23	1050.0	1.19
650.0	1.61	0.13	8.35	1150.0	1.14
800.0	0.67	0.02	17.38	1200.0	1.13
1000.0	0.77	0.01	13.11	1250.0	1.13
1200.0	0.79	0.01	13.92	1300.0	1.13
1500.0	0.97	0.04	14.26	1350.0	1.14
1800.0	1.23	0.06	25.74	1400.0	1.15
1970.0	3.72	0.83	6.44	1500.0	1.19
2030.0	8.79	1.47	3.08	1600.0	1.27
2100.0	16.46	1.72	1.67	1650.0	1.32
2220.0	32.60	2.60	1.02	1700.0	1.39
2250.0	36.64	3.50	0.96	1750.0	1.48
5000.0	32.11	1.21	0.98	1800.0	1.63



Mini-Circuits®
ISO 9001 ISO 14001 CERTIFIED

P.O. Box 350166, Brooklyn, New York 11235-0003 (718) 934-4500 Fax (718) 332-4661 For detailed performance specs & shopping online see Mini-Circuits web site



The Design Engineers Search Engine Provides ACTUAL Data Instantly From MINI-CIRCUITS At: www.minicircuits.com

RF/IF MICROWAVE COMPONENTS

ALL NEW
[minicircuits.com](http://www.minicircuits.com)

REV. OR
M117937
EDR-9257U
SXBP-1200+
URJ/RAV
080603
Page 1 of 1