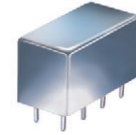


# Plug-In Frequency Mixer

## SRA-6+

Level 7 (LO Power +7 dBm) 0.003 to 100 MHz



CASE STYLE: A01  
PRICE: \$29.20 ea. QTY (1-9)

+ RoHS compliant in accordance with EU Directive (2002/95/EC)

The +Suffix has been added in order to identify RoHS Compliance. See our web site for RoHS Compliance methodologies and qualifications.

### Maximum Ratings

Operating Temperature	-55°C to 100°C
Storage Temperature	-55°C to 100°C
RF Power	50mW
IF Current	40mA
Permanent damage may occur if any of these limits are exceeded.	

### Features

- excellent conversion loss, 4.58 dB typ.
- high L-R isolation, 45 dB typ. L-I isolation, 40 dB typ.
- rugged welded construction
- hermetic

### Applications

- VHF TV
- defense & federal communications
- radio astronomy

### Pin Connections

LO	8
RF	1
IF	3,4 <sup>^</sup>
GROUND	2,5,6,7

<sup>^</sup> pins must be connected together externally

### Electrical Specifications

FREQUENCY (MHz)		CONVERSION LOSS (dB)				LO-RF ISOLATION (dB)			LO-IF ISOLATION (dB)								
LO/RF	IF	Mid-Band		Total	L	M	U	L	M	U							
$f_L$ - $f_U$		$\bar{X}$	$\sigma$	Max.	Typ.	Min.	Typ.	Min.	Typ.	Min.							
.003-100	DC-100	4.58	.05	7.5	8.5	60	50	45	30	35	25	60	45	40	25	30	20

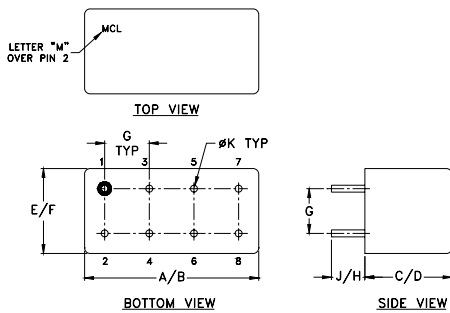
1 dB COMP.: +1 dBm typ.

L = low range [ $f_L$  to  $10 f_L$ ]  
m = mid band [ $2 f_L$  to  $f_U/2$ ]

M = mid range [ $10 f_L$  to  $f_U/2$ ]

U = upper range [ $f_U/2$  to  $f_U$ ]

### Outline Drawing



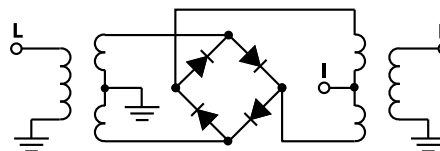
### Outline Dimensions (inch/mm)

A	B	C	D	E	F
.770	.800	.385	.400	.370	.400
19.56	20.32	9.78	10.16	9.40	10.16
G	H	J	K	wt	
.200	.20	.14	.031	grams	
5.08	5.08	3.56	0.79	5.2	

### Typical Performance Data

Frequency (MHz)		Conversion Loss (dB)	VSWR RF Port (:1)	Frequency (MHz)	Isolation L-R (dB)	Isolation L-I (dB)	VSWR LO Port (:1)
RF	LO	LO +7dBm	LO +7dBm	LO	LO +7dBm	LO +7dBm	LO +7dBm
0.25	30.25	4.69	1.18	0.25	87.94	69.25	2.72
0.50	30.50	4.70	1.21	2.20	88.51	67.15	2.60
1.00	31.00	4.72	1.23	5.13	80.05	62.74	2.56
2.00	32.00	4.71	1.23	10.00	74.49	58.28	2.48
4.00	34.00	4.72	1.25	30.00	65.04	46.76	2.43
6.00	36.00	4.75	1.26	35.00	61.86	45.54	2.42
8.00	38.00	4.77	1.25	40.00	58.66	43.62	2.43
10.00	40.00	4.77	1.24	45.00	62.82	41.15	2.44
15.00	45.00	4.75	1.24	49.00	62.74	40.69	2.45
19.00	49.00	4.72	1.23	53.00	59.34	40.12	2.47
23.00	53.00	4.69	1.20	57.00	55.11	40.91	2.50
31.00	61.00	5.04	1.19	61.00	51.93	41.11	2.55
39.00	69.00	5.21	1.17	65.00	50.11	39.64	2.58
51.00	81.00	5.29	1.22	69.00	48.56	38.35	2.62
61.00	91.00	5.51	1.37	73.00	47.39	36.57	2.65
67.00	97.00	5.71	1.44	81.00	45.06	33.06	2.70
70.00	100.00	5.80	1.46	85.00	44.27	31.87	2.74
85.00	115.00	5.84	1.41	92.50	43.42	30.32	2.89
92.50	122.50	5.90	1.24	96.25	43.22	30.02	2.98
100.00	130.00	5.93	1.12	100.00	42.87	30.05	3.06

### Electrical Schematic



**Mini-Circuits**  
ISO 9001 ISO 14001 AS 9100 CERTIFIED

P.O. Box 350166, Brooklyn, New York 11235-0003 (718) 934-4500 Fax (718) 332-4661 The Design Engineers Search Engine Provides ACTUAL Data Instantly at [minicircuits.com](http://minicircuits.com)

For detailed performance specs & shopping online see web site

Notes: 1. Performance and quality attributes and conditions not expressly stated in this specification sheet are intended to be excluded and do not form a part of this specification sheet. 2. Electrical specifications and performance data contained herein are based on Mini-Circuit's applicable established test performance criteria and measurement instructions. 3. The parts covered by this specification sheet are subject to Mini-Circuit's standard limited warranty and terms and conditions (collectively, "Standard Terms"); Purchasers of this part are entitled to the rights and benefits contained therein. For a full statement of the Standard Terms and the exclusive rights and remedies thereunder, please visit Mini-Circuit's website at [www.minicircuits.com/MCLStore/terms.jsp](http://www.minicircuits.com/MCLStore/terms.jsp).

REV. A  
M98898  
SRA-6+  
DJ/TD/CP/AM  
091006  
Page 1 of 2

