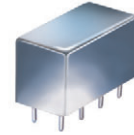


Plug-In Frequency Mixer

SRA-11H+

Level 17 (LO Power +17 dBm) 10 to 3000 MHz



CASE STYLE: A01
PRICE: \$51.20 ea. QTY (1-9)

+ RoHS compliant in accordance with EU Directive (2002/95/EC)

The +Suffix has been added in order to identify RoHS Compliance. See our web site for RoHS Compliance methodologies and qualifications.

Maximum Ratings

Operating Temperature	-55°C to 100°C
Storage Temperature	-55°C to 100°C
RF Power	200mW
IF Current	40mA
Permanent damage may occur if any of these limits are exceeded.	

Pin Connections

LO	8
RF	1
IF	3
GROUND	2,5,6,7
CASE GROUND	2,5,6,7
NOT USED	4

Features

- excellent conversion loss, 6.83 dB typ.
- good L-R isolation, 25 dB typ. L-I isolation, 25 dB typ.
- rugged welded construction
- hermetically sealed

Applications

- VHF
- MMDS
- PCS
- GPS
- defense & civil space systems

Electrical Specifications

FREQUENCY (MHz)		CONVERSION LOSS (dB)				LO-RF ISOLATION (dB)						LO-IF ISOLATION (dB)					
LO/RF f_L-f_U	IF	Mid-Band m		Total Range Max.	Total Range Max.	L		M		U		L		M		U	
		\bar{X}	σ			Typ.	Min.	Typ.	Min.	Typ.	Min.	Typ.	Min.	Typ.	Min.	Typ.	Min.
10-3000	10-1000	6.83	.09	10.0	12.0	27	20	25	18	23	16	27	20	25	18	23	16

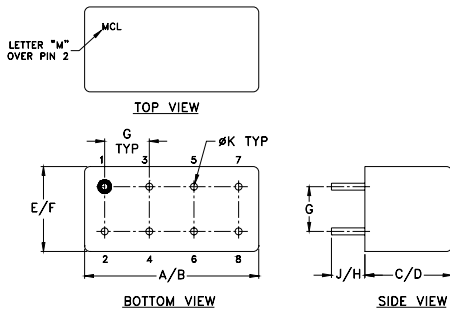
1 dB COMP.: +10 dBm typ.

L = low range [f_L to $10 f_L$]
m = mid band [$2 f_L$ to $f_U/2$]

M = mid range [$10 f_L$ to $f_U/2$]

U = upper range [$f_U/2$ to f_U]

Outline Drawing



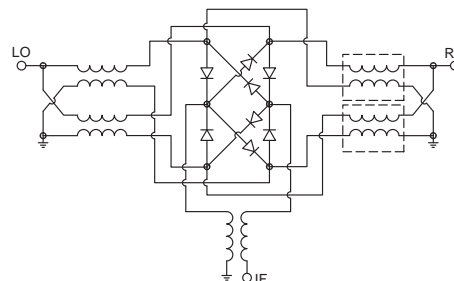
Outline Dimensions (inch/mm)

A	B	C	D	E	F
.770	.800	.385	.400	.370	.400
19.56	20.32	9.78	10.16	9.40	10.16
G	H	J	K	wt	
.200	.20	.14	.031		grams
5.08	5.08	3.56	0.79		5.2

Typical Performance Data

Frequency (MHz)		Conversion Loss (dB)	Isolation L-R (dB)	Isolation L-I (dB)	VSWR RF Port (:1)	VSWR LO Port (:1)
RF	LO	LO +17dBm	LO +17dBm	LO +17dBm	LO +17dBm	LO +17dBm
10.00	40.00	6.43	32.26	35.01	1.13	2.07
20.00	50.00	6.58	33.52	36.23	1.07	2.19
103.44	73.44	6.60	32.25	33.97	1.08	2.01
200.00	170.00	6.78	30.89	32.03	1.13	1.96
290.31	260.31	6.75	29.76	30.61	1.18	1.91
500.00	470.00	6.94	28.74	29.28	1.29	1.83
570.63	540.69	6.81	28.80	29.04	1.34	1.81
757.50	727.50	7.00	28.06	28.08	1.48	1.81
944.38	913.91	7.05	28.00	26.87	1.66	1.80
1037.80	1007.40	7.37	28.67	26.49	1.72	1.74
1318.10	1288.00	6.81	27.69	26.66	1.92	1.69
1505.00	1474.90	6.68	27.57	27.97	1.99	1.65
1598.40	1568.30	6.65	27.30	28.78	1.75	1.91
1785.30	1755.00	6.71	27.75	28.96	1.89	1.91
1972.20	1942.10	6.57	29.51	31.44	1.76	1.75
2065.60	2035.10	6.76	28.94	33.79	1.68	1.66
2252.50	2222.10	6.61	30.22	36.80	1.68	1.49
2439.40	2408.60	6.63	31.19	37.00	1.69	1.14
2626.30	2596.00	6.95	30.21	30.13	1.49	1.26
3000.00	2969.30	8.58	32.46	26.88	1.90	2.47

Electrical Schematic



Mini-Circuits
ISO 9001 ISO 14001 AS 9100 CERTIFIED

P.O. Box 350166, Brooklyn, New York 11235-0003 (718) 934-4500 Fax (718) 332-4661 The Design Engineers Search Engine Provides ACTUAL Data Instantly at minicircuits.com

For detailed performance specs & shopping online see web site

Notes: 1. Performance and quality attributes and conditions not expressly stated in this specification sheet are intended to be excluded and do not form a part of this specification sheet. 2. Electrical specifications and performance data contained herein are based on Mini-Circuit's applicable established test performance criteria and measurement instructions. 3. The parts covered by this specification sheet are subject to Mini-Circuit's standard limited warranty and terms and conditions (collectively, "Standard Terms"); Purchasers of this part are entitled to the rights and benefits contained therein. For a full statement of the Standard Terms and the exclusive rights and remedies thereunder, please visit Mini-Circuit's website at www.minicircuits.com/MCLStore/terms.jsp.

REV. A
M98898
SRA-11H
DJ/TD/CP/AM
091006
Page 1 of 2

