

Bandpass Filter

SIF-60+

50Ω Constant Impedance 50 to 70 MHz

Maximum Ratings

Operating Temperature	-55°C to 100°C
Storage Temperature	-55°C to 100°C
RF Power Input	0.5W max.

Permanent damage may occur if any of these limits are exceeded.

Features

- rugged shielded case
- wide selection of cut-off frequencies
- custom fco models available

Applications

- harmonic rejection
- lab use



CASE STYLE: FF99

Connectors	Model	Price	Qty.
SMA	SIF-60+	\$38.95 ea.	(1-9)

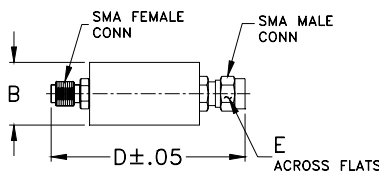
+ RoHS compliant in accordance with EU Directive (2002/95/EC)

The +Suffix has been added in order to identify RoHS Compliance. See our web site for RoHS Compliance methodologies and qualifications.

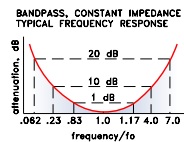
Bandpass Filter Electrical Specifications

CENTER FREQ. (MHz)	PASSBAND (MHz) (loss < 1 dB)	STOPBANDS		VSWR, 1.3:1 Typ. TOTAL BAND (MHz)
		(loss > 10 dB) at MHz	(loss > 20 dB) at MHz	
60	50-70	14 & 240	3.8 & 400	DC-500

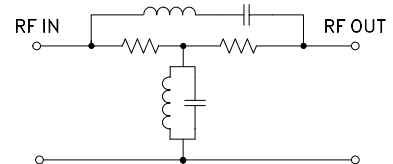
Outline Drawing



typical frequency response



electrical schematic

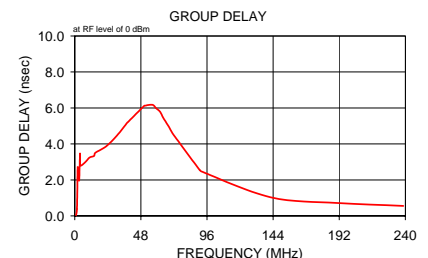
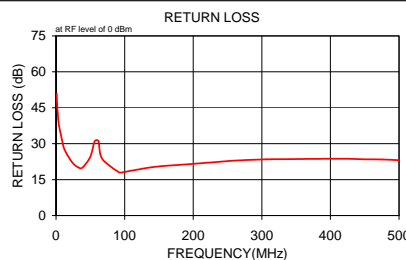
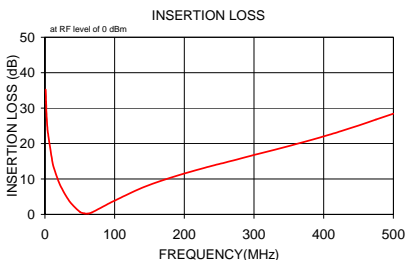


Typical Performance Data

Frequency (MHz)	Insertion Loss (dB)		Return Loss (dB)	Frequency (MHz)	Group Delay (nsec)
	\bar{x}	σ			
1.0	35.25	0.1	50.9	1.0	0.036
1.6	31.45	0.1	46.7	1.6	0.385
2.1	28.84	0.1	43.8	2.1	2.704
2.7	26.81	0.1	41.8	2.7	2.564
3.2	25.18	0.1	40.0	3.2	1.978
3.8	23.80	0.1	38.6	3.8	3.449
4.0	23.37	0.1	37.9	3.9	2.820
10.7	14.83	0.1	29.0	7.3	2.963
14.0	12.40	0.1	26.6	10.7	3.244
20.0	9.15	0.1	23.6	14.0	3.331
26.0	6.66	0.1	21.4	15.0	3.511
32.0	4.65	0.1	20.2	22.8	3.863
38.0	3.00	0.1	19.9	30.5	4.455
50.0	0.75	0.1	24.5	38.2	5.190
56.4	0.27	0.1	31.0	38.9	5.236
61.9	0.26	0.1	31.0	50.4	6.121
67.3	0.54	0.0	23.7	51.3	6.127
92.0	3.08	0.1	18.0	54.0	6.168
94.0	3.30	0.1	17.9	56.9	6.165
142.7	7.76	0.1	20.3	58.9	6.001
191.3	11.04	0.1	21.4	62.0	5.775
240.0	13.71	0.2	22.5	64.2	5.461
260.0	14.71	0.2	22.9	67.6	5.045
306.7	17.09	0.2	23.5	70.0	4.715
353.3	19.45	0.3	23.6	71.2	4.566
400.0	22.02	0.5	23.7	90.7	2.549
425.0	23.50	0.6	23.7	92.3	2.464
450.0	25.09	0.6	23.5	142.1	1.039
475.0	26.76	0.8	23.4	190.5	0.715
500.0	28.43	0.9	23.1	238.5	0.552

Outline Dimensions (inch/mm)

B	D	E	wt
.67	1.98	.312	grams
17.02	50.29	7.92	42.0



P.O. Box 350166, Brooklyn, New York 11235-0003 (718) 934-4500 Fax (718) 332-4661 The Design Engineers Search Engine Provides ACTUAL Data Instantly at minicircuits.com

IF/RF MICROWAVE COMPONENTS

For detailed performance specs & shopping online see web site

Notes: 1. Performance and quality attributes and conditions not expressly stated in this specification sheet are intended to be excluded and do not form a part of this specification sheet. 2. Electrical specifications and performance data contained herein are based on Mini-Circuit's applicable established test performance criteria and measurement instructions. 3. The parts covered by this specification sheet are subject to Mini-Circuits standard limited warranty and terms and conditions (collectively, "Standard Terms"); Purchasers of this part are entitled to the rights and benefits contained therein. For a full statement of the Standard Terms and the exclusive rights and remedies thereunder, please visit Mini-Circuits' website at www.minicircuits.com/MCLStore/terms.jsp.

REV. B
M108294
SIF-60+
090821