

# Coaxial High Pass Filter

## SHP-400+

50Ω 395 to 3200 MHz

### Maximum Ratings

Operating Temperature	-55°C to 100°C
Storage Temperature	-55°C to 100°C
RF Power Input	0.5W max.

Permanent damage may occur if any of these limits are exceeded.

### Features

- rugged shielded case
- other standard and custom SHP models available with wide selection of fco

### Applications

- lab use
- transmitters/receivers
- radio communications



CASE STYLE: FF99

Connectors	Model	Price	Qty.
SMA	SHP-400+	\$38.95 ea.	(1-9)

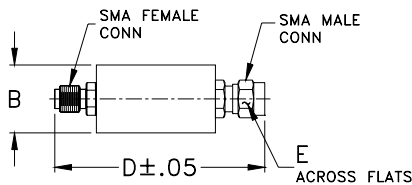
+ RoHS compliant in accordance with EU Directive (2002/95/EC)

The +Suffix has been added in order to identify RoHS Compliance. See our web site for RoHS Compliance methodologies and qualifications.

### High Pass Filter Electrical Specifications

STOPBAND (MHz)		fco (MHz) Nom.	PASSBAND (MHz)	VSWR (:1)	
(loss > 40 dB)	(loss > 20 dB)	(loss 3 dB)	(loss < 1 dB)	Stopband Typ.	Passband Typ.
DC-210	210-290	360	395-3200	17	1.7

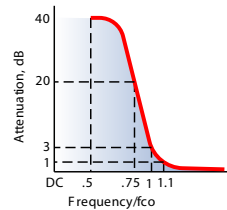
### Outline Drawing



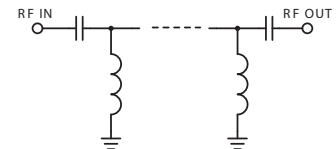
### Outline Dimensions (inch/mm)

B	D	E	wt
.67	1.98	.312	grams
17.02	50.29	7.92	42.0

### typical frequency response

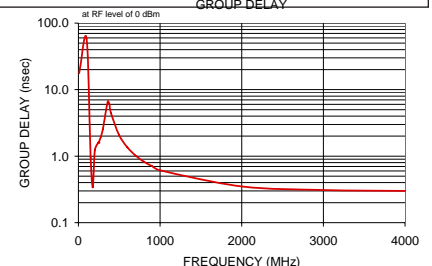
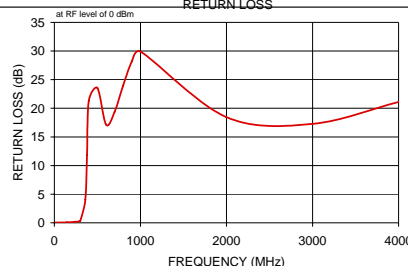
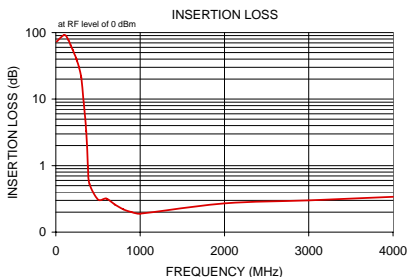


### electrical schematic



### Typical Performance Data

Frequency (MHz)	Insertion Loss (dB)	Return Loss (dB)	Frequency (MHz)	Group Delay (nsec)
	$\bar{x}$	$\sigma$		
10.00	73.49	3.76	10.00	17.71
100.00	92.04	7.79	100.00	57.88
150.00	76.80	1.38	150.00	0.94
175.00	64.86	0.57	175.00	0.34
200.00	55.25	0.43	200.00	1.22
240.00	41.38	0.57	240.00	1.56
241.00	41.06	0.57	241.00	1.56
242.00	40.72	0.57	242.00	1.57
243.00	40.39	0.58	243.00	1.57
244.00	40.06	0.58	244.00	1.58
245.00	39.73	0.58	245.00	1.61
246.00	39.40	0.57	246.00	1.60
247.00	39.07	0.59	247.00	1.60
250.00	38.09	0.59	250.00	1.61
275.00	29.94	0.66	275.00	1.96
300.00	21.83	0.75	300.00	2.53
301.00	21.50	0.75	301.00	2.56
302.00	21.18	0.76	302.00	2.59
360.00	3.31	0.67	360.00	6.64
380.00	0.95	0.19	380.00	6.00
400.00	0.53	0.01	400.00	4.41
500.00	0.31	0.02	500.00	2.06
600.00	0.32	0.03	600.00	1.35
700.00	0.26	0.02	700.00	1.02
800.00	0.22	0.01	800.00	0.83
900.00	0.20	0.01	900.00	0.71
1000.00	0.19	0.01	1000.00	0.61
2000.00	0.27	0.02	2000.00	0.35
3000.00	0.30	0.03	3000.00	0.31
4000.00	0.34	0.01	4000.00	0.30



P.O. Box 350166, Brooklyn, New York 11235-0003 (718) 934-4500 Fax (718) 332-4661 The Design Engineers Search Engine Provides ACTUAL Data Instantly at [minicircuits.com](http://minicircuits.com)

IF/RF MICROWAVE COMPONENTS

For detailed performance specs & shopping online see web site

Notes: 1. Performance and quality attributes and conditions not expressly stated in this specification sheet are intended to be excluded and do not form a part of this specification sheet. 2. Electrical specifications and performance data contained herein are based on Mini-Circuit's applicable established test performance criteria and measurement instructions. 3. The parts covered by this specification sheet are subject to Mini-Circuits standard limited warranty and terms and conditions (collectively, "Standard Terms"); Purchasers of this part are entitled to the rights and benefits contained therein. For a full statement of the Standard Terms and the exclusive rights and remedies thereunder, please visit Mini-Circuits' website at [www.minicircuits.com/MCLStore/terms.jsp](http://www.minicircuits.com/MCLStore/terms.jsp).

REV. C  
M120055  
SHP-400+  
090821