

# Coaxial High Pass Filter

## SHP-250+

50Ω 225 to 3000 MHz



### Maximum Ratings

Operating Temperature	-55°C to 100°C
Storage Temperature	-55°C to 100°C
RF Power Input	0.5W max.

Permanent damage may occur if any of these limits are exceeded.

### Features

- rugged shielded case
- other standard and custom SHP models available with wide selection of fco

### Applications

- lab use
- transmitters/receivers
- radio communications

CASE STYLE: FF99			
Connectors	Model	Price	Qty.
SMA	SHP-250+	\$38.95 ea.	(1-9)

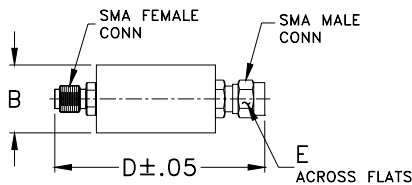
**+ RoHS compliant in accordance with EU Directive (2002/95/EC)**

The +Suffix has been added in order to identify RoHS Compliance. See our web site for RoHS Compliance methodologies and qualifications.

### High Pass Filter Electrical Specifications

STOPBAND (MHz)		fco (MHz) Nom.	PASSBAND (MHz)	VSWR (:1)	
(loss > 40 dB)	(loss > 20 dB)	(loss 3 dB)	(loss < 1 dB)	Stopband Typ.	Passband Typ.
DC-100	100-150	205	225-3000	17	1.3

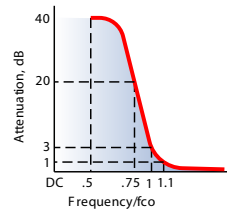
### Outline Drawing



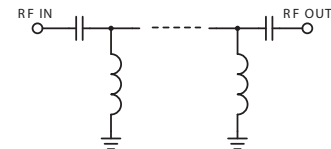
### Outline Dimensions (inch/mm)

B	D	E	wt
.67	1.98	.312	grams
17.02	50.29	7.92	42.0

### typical frequency response

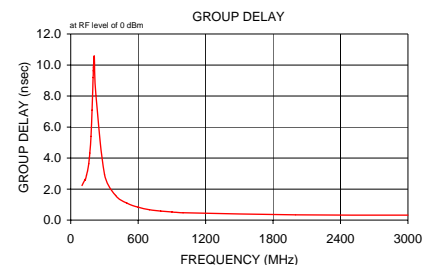
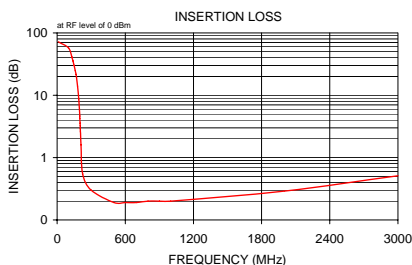


### electrical schematic



### Typical Performance Data

Frequency (MHz)	Insertion Loss (dB)	Return Loss (dB)	Frequency (MHz)	Group Delay (nsec)
	$\bar{x}$	$\sigma$		
10.00	72.15	5.67	100.00	2.23
100.00	57.26	0.27	129.00	2.63
129.00	41.25	0.45	130.00	2.59
130.00	40.71	0.46	140.00	2.90
140.00	35.39	0.54	150.00	3.17
150.00	30.09	0.62	160.00	3.63
160.00	24.78	0.73	166.00	4.00
166.00	21.57	0.80	170.00	4.32
170.00	19.43	0.85	180.00	5.39
180.00	14.04	0.97	190.00	7.09
190.00	8.77	1.03	199.00	9.19
199.00	4.65	0.89	200.00	9.41
200.00	4.26	0.86	201.00	9.63
201.00	3.90	0.83	202.00	9.83
202.00	3.56	0.79	203.00	10.02
203.00	3.24	0.75	204.00	10.18
204.00	2.94	0.70	205.00	10.32
205.00	2.66	0.66	206.00	10.43
206.00	2.41	0.61	210.00	10.58
210.00	1.60	0.42	225.00	8.03
225.00	0.55	0.03	300.00	2.94
300.00	0.30	0.02	400.00	1.59
500.00	0.19	0.00	500.00	1.09
600.00	0.19	0.00	600.00	0.83
700.00	0.19	0.01	700.00	0.67
800.00	0.20	0.01	800.00	0.58
900.00	0.20	0.01	900.00	0.52
1000.00	0.20	0.00	1000.00	0.47
2000.00	0.29	0.00	2000.00	0.34
3000.00	0.51	0.02	3000.00	0.32



**Mini-Circuits®**  
ISO 9001 ISO 14001 AS 9100 CERTIFIED

P.O. Box 350166, Brooklyn, New York 11235-0003 (718) 934-4500 Fax (718) 332-4661 The Design Engineers Search Engine Provides ACTUAL Data Instantly at [minicircuits.com](http://minicircuits.com)

IF/RF MICROWAVE COMPONENTS

For detailed performance specs & shopping online see web site

Notes: 1. Performance and quality attributes and conditions not expressly stated in this specification sheet are intended to be excluded and do not form a part of this specification sheet. 2. Electrical specifications and performance data contained herein are based on Mini-Circuit's applicable established test performance criteria and measurement instructions. 3. The parts covered by this specification sheet are subject to Mini-Circuits standard limited warranty and terms and conditions (collectively, "Standard Terms"); Purchasers of this part are entitled to the rights and benefits contained therein. For a full statement of the Standard Terms and the exclusive rights and remedies thereunder, please visit Mini-Circuits' website at [www.minicircuits.com/MCLStore/terms.jsp](http://www.minicircuits.com/MCLStore/terms.jsp).

REV. C  
M113397  
SHP-250+  
090821