

Coaxial High Pass Filter

SHP-100A+

50Ω 100 to 3000 MHz

Maximum Ratings

Operating Temperature	-55°C to 100°C
Storage Temperature	-55°C to 100°C
RF Power Input	0.1W max.

Permanent damage may occur if any of these limits are exceeded.

Features

- rugged shielded case

Applications

- lab use
- transmitters/receivers
- radio communications



CASE STYLE: FF99

Connectors	Model	Price	Qty.
SMA	SHP-100A+	\$41.95 ea.	(1-9)

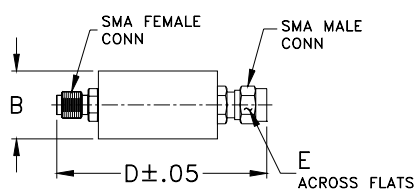
+ RoHS compliant in accordance with EU Directive (2002/95/EC)

The +Suffix has been added in order to identify RoHS Compliance. See our web site for RoHS Compliance methodologies and qualifications.

High Pass Filter Electrical Specifications

STOPBAND (MHz)		f _{co} (MHz) Nom.	PASSBAND (MHz)		VSWR (:1)	
(loss > 40 dB)	(loss > 20 dB)	(loss 3 dB)	(loss <1 dB)	(loss <1.7 dB)	Stopband Typ.	Passband Typ.
DC-77	77-82	92	110-2000	2000-3000	13	1.6

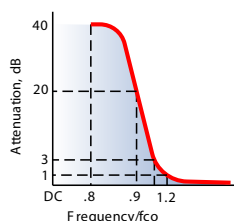
Outline Drawing



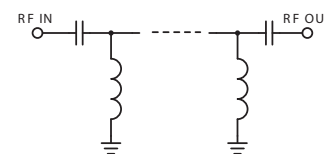
Outline Dimensions (inch/mm)

B	D	E	wt
.67	1.98	.312	grams
17.02	50.29	7.92	42.0

typical frequency response

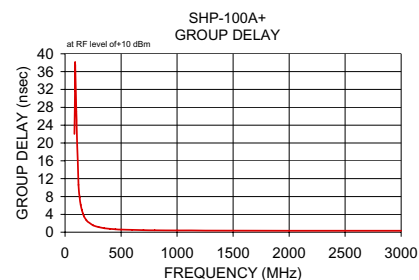
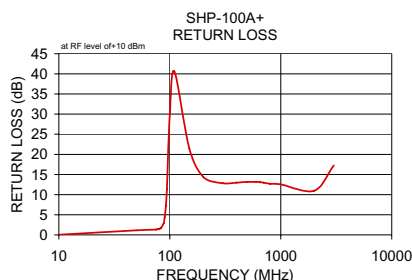


electrical schematic



Typical Performance Data

Frequency (MHz)	Insertion Loss (dB)	Return Loss (dB)	Frequency (MHz)	Group Delay (nsec)
10.00	72.11	0.05	84.00	22.02
50.00	57.35	1.13	88.00	31.80
75.00	58.56	1.33	90.00	37.99
77.00	46.88	1.38	100.00	27.06
80.00	34.21	1.48	120.00	10.61
82.00	27.39	1.60	130.00	7.80
83.00	24.28	1.68	140.00	6.12
88.00	10.95	2.87	150.00	4.99
90.00	6.93	4.36	160.00	4.17
92.00	4.13	7.12	170.00	3.55
94.00	2.55	11.26	180.00	3.08
100.00	1.18	29.89	190.00	2.72
110.00	0.71	40.57	200.00	2.42
150.00	0.35	21.43	250.00	1.54
200.00	0.37	14.40	300.00	1.13
300.00	0.38	12.83	350.00	0.90
400.00	0.36	12.97	400.00	0.76
500.00	0.34	13.15	450.00	0.65
600.00	0.34	13.15	500.00	0.59
650.00	0.35	13.08	600.00	0.54
700.00	0.36	13.00	700.00	0.46
800.00	0.39	12.70	800.00	0.43
1000.00	0.42	12.53	1000.00	0.38
2000.00	0.65	10.97	2000.00	0.34
3000.00	0.88	17.25	3000.00	0.34



Mini-Circuits®
ISO 9001 ISO 14001 AS 9100 CERTIFIED

minicircuits.com

P.O. Box 350166, Brooklyn, New York 11235-0003 (718) 934-4500 Fax (718) 332-4661 For detailed performance specs & shopping online see Mini-Circuits web site

Design Engine The Design Engineers Search Engine Provides ACTUAL Data Instantly From MINI-CIRCUITS At: www.minicircuits.com

IF/RF MICROWAVE COMPONENTS

REV. B
M117466
SHP-100A+
ED-12723/2
MM/CP/AM
080428