

Surface Mount

# Diplexer

## SDP-2R15+

50Ω DC to 2150 MHz  
(DC-800, 1500-2150 MHz)



CASE STYLE: HU1186

### The Big Deal

- Low insertion loss
- High Rejection
- Miniature shielded package

### Product Overview

SDP-2R15+ is a low-pass + high-pass combination device. Low pass port is designed for DC to 800 MHz and high pass port is designed for 1500 to 2150 MHz. This diplexer can be used in SATCOM, navigation, point to point radio and vehicle tracking system and multiband radio systems.

### Key Features

Feature	Advantages
Low passband insertion loss	Suitable for high performance application
Excellent stopband rejection	Spurious rejection and avoids using additional filters
Shielded case	Reduced interference with the surrounding components.

 **Mini-Circuits**<sup>®</sup>  
ISO 9001 ISO 14001 AS 9100 CERTIFIED

For detailed performance specs  
& shopping online see web site

P.O. Box 350166, Brooklyn, New York 11235-0003 (718) 934-4500 Fax (718) 332-4661 The Design Engineers Search Engine  Provides ACTUAL Data Instantly at [minicircuits.com](http://minicircuits.com)

IF/RF MICROWAVE COMPONENTS

**Notes:** 1. Performance and quality attributes and conditions not expressly stated in this specification sheet are intended to be excluded and do not form a part of this specification sheet. 2. Electrical specifications and performance data contained herein are based on Mini-Circuit's applicable established test performance criteria and measurement instructions. 3. The parts covered by this specification sheet are subject to Mini-Circuits standard limited warranty and terms and conditions (collectively, "Standard Terms"); Purchasers of this part are entitled to the rights and benefits contained therein. For a full statement of the Standard Terms and the exclusive rights and remedies thereunder, please visit Mini-Circuits' website at [www.minicircuits.com/MCLStore/terms.jsp](http://www.minicircuits.com/MCLStore/terms.jsp).

# Surface Mount Diplexer

## SDP-2R15+

50Ω DC to 2150 MHz (DC-800, 1500-2150 MHz)



CASE STYLE: HU1186  
PRICE: \$18.95 ea. QTY (10)

+ RoHS compliant in accordance with EU Directive (2002/95/EC)

The +Suffix has been added in order to identify RoHS Compliance. See our web site for RoHS Compliance methodologies and qualifications.

### Maximum Ratings

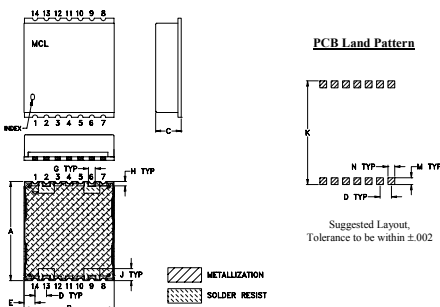
Operating Temperature	-40°C to 85°C
Storage Temperature	-55°C to 100°C
RF Power Input	2W at 25°C

Permanent damage may occur if any of these limits are exceeded. These ratings are not intended for continuous normal operation

### Pin Connections

HIGH PASS PORT	6
LOW PASS PORT	13
COMMON PORT	2
GROUND	1,3-5,7-12,14

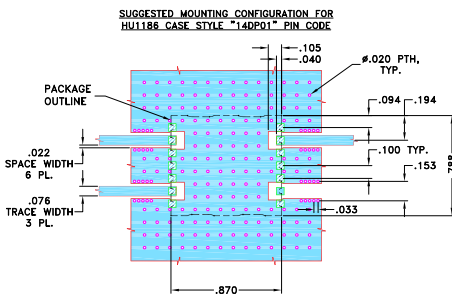
### Outline Drawing



### Outline Dimensions (inch/mm)

A	B	C	D	E	F	G	H
.870	.800	.25	.100	.097	--	.060	.040
22.10	20.32	6.35	2.54	2.46	--	1.52	1.02
J	K	L	M	N	P	wt	
.105	.910	--	.060	.060	--	grams	
2.67	23.11	--	1.52	1.52	--	2.85	

### Demo Board MCL P/N: TB-647+ Suggested PCB Layout (PL-353)



### Features

- Low insertion loss
- 50Ω Impedance
- Combination of Low pass and High pass filters
- Miniature shielded package
- Aqueous washable

### Applications

- Satcom
- Navigation
- Vehicle tracking system

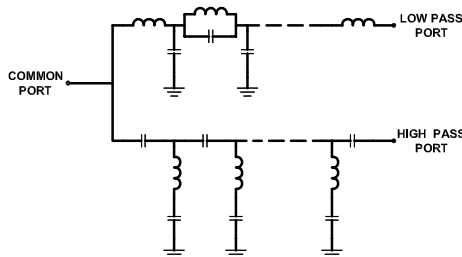
### Electrical Specifications at 25°C

Parameter	Port	Frequency (MHz)	Min.	Typ.	Max.	Unit	
Pass Band	Insertion Loss	Low Pass	DC-800	-	0.4	1.0	dB
		High Pass	1500-2150	-	0.5	1.0	
	Return Loss	Low Pass	DC-800	12	19	-	dB
		High Pass	1500-2150	12	20	-	
Common		DC-800 1500-2150	12	19	-		
Stop Band Isolation	Low Pass	1300-3000	20	30	-	dB	
	High Pass	DC-930 DC-800	20	29	-		

### Typical Performance Data at 25°C

FREQUENCY (MHz)	INSERTION LOSS (dB)			RETURN LOSS (dB)	
	Low Pass Port	High Pass Port	Common Port	Low Pass Port	High Pass Port
1	0.01	92.57	51.39	50.76	0.00
10	0.02	74.49	44.64	45.01	0.00
30	0.04	64.97	35.95	36.12	0.00
110	0.09	53.78	26.02	26.11	0.02
270	0.17	47.24	20.14	20.16	0.08
395	0.20	46.86	19.63	19.63	0.14
800	0.36	48.55	24.17	22.93	0.39
870	0.58	36.79	14.84	14.27	0.43
930	1.31	29.33	8.26	7.98	0.52
980	2.87	19.89	4.52	4.24	0.69
1000	3.85	15.94	3.57	3.17	0.84
1070	9.19	6.43	2.83	1.05	2.32
1110	13.23	3.90	3.82	0.61	3.81
1150	17.41	2.56	5.20	0.45	5.40
1250	27.13	1.15	9.17	0.34	9.38
1300	31.77	0.84	11.56	0.33	11.67
1500	48.49	0.42	29.33	0.33	27.58
1595	59.49	0.40	33.71	0.33	37.20
1905	49.68	0.41	25.88	0.34	27.14
2150	47.56	0.46	20.40	0.34	21.11
2800	45.37	1.15	8.79	0.36	8.68
3000	47.80	1.34	8.10	0.38	7.90

### Functional Schematic



**Mini-Circuits**  
ISO 9001 ISO 14001 AS 9100 CERTIFIED

For detailed performance specs & shopping online see web site

P.O. Box 350166, Brooklyn, New York 11235-0003 (718) 934-4500 Fax (718) 332-4661 The Design Engineers Search Engine Provides ACTUAL Data Instantly at [minicircuits.com](http://minicircuits.com)

IF/RF MICROWAVE COMPONENTS

Notes: 1. Performance and quality attributes and conditions not expressly stated in this specification sheet are intended to be excluded and do not form a part of this specification sheet. 2. Electrical specifications and performance data contained herein are based on Mini-Circuit's applicable established test performance criteria and measurement instructions. 3. The parts covered by this specification sheet are subject to Mini-Circuits standard limited warranty and terms and conditions (collectively, "Standard Terms"); Purchasers of this part are entitled to the rights and benefits contained therein. For a full statement of the Standard Terms and the exclusive rights and remedies thereunder, please visit Mini-Circuits' website at [www.minicircuits.com/MCLStore/terms.jsp](http://www.minicircuits.com/MCLStore/terms.jsp).

REV. OR  
M133603  
EDU1191  
SDP-2R15+  
URJ  
111229  
Page 2 of 3

