

# Bandpass Filter

**SBP-60+**

50Ω Elliptic Response 55 to 67 MHz

**Maximum Ratings**

Operating Temperature	-55°C to 100°C
Storage Temperature	-55°C to 100°C
RF Power Input	0.5W max.

Permanent damage may occur if any of these limits are exceeded.

**Features**

- low insertion loss, 1.5 dB max.
- good selectivity, 1.76 typ. 20 dB / 3dB BW ratio
- rugged shielded case

**Applications**

- high rejection applications
- image rejection
- IF signal processing



CASE STYLE: FF99

Connectors	Model	Price	Qty.
SMA	SBP-60+	\$42.95 ea.	(1-9)

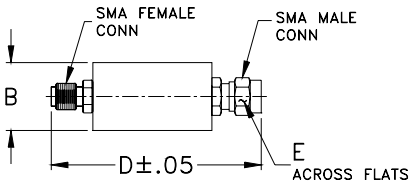
**+ RoHS compliant in accordance with EU Directive (2002/95/EC)**

The +Suffix has been added in order to identify RoHS Compliance. See our web site for RoHS Compliance methodologies and qualifications.

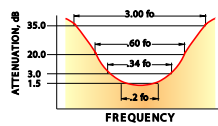
**Bandpass Filter Electrical Specifications**

CENTER FREQ. (MHz)	PASSBAND (MHz) I.L. 1.5 dB Max.	3dB BANDWIDTH (MHz) Typ.	STOPBANDS		VSWR (:1)	
			(I. loss > 20 dB) at MHz	(I. loss > 35 dB) at MHz	Passband Max.	Stopband Typ.
60	55-67	49.8-70.5	44 & 79	4.6 & 190-1000	1.7	16

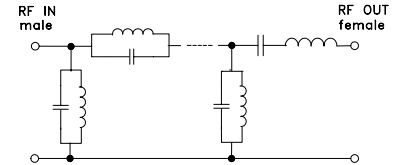
**Outline Drawing**



**typical frequency response**



**electrical schematic**

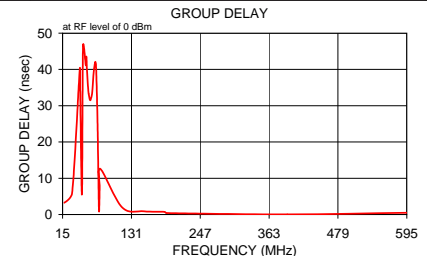
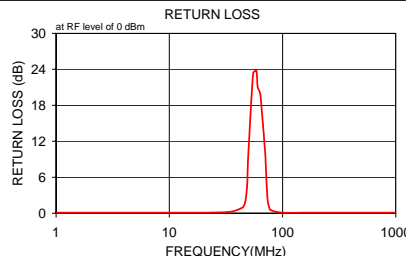
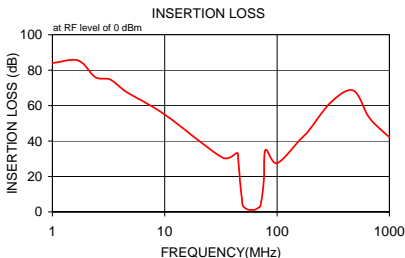


**Outline Dimensions (inch/mm)**

B	D	E	wt
.67	1.98	.312	grams
17.02	50.29	7.92	42.0

**Typical Performance Data**

Frequency (MHz)	Insertion Loss (dB)		Return Loss (dB)	Frequency (MHz)	Group Delay (nsec)
	$\bar{x}$	$\sigma$			
1.0	84.04	7.1	0.1	17.9	3.240
1.7	85.43	7.0	0.1	31.1	5.995
2.4	76.11	2.6	0.1	43.9	39.921
3.2	74.96	2.8	0.1	44.7	35.653
3.9	71.07	2.3	0.1	46.2	16.491
4.6	67.50	1.7	0.1	47.9	6.771
10.0	54.99	0.4	0.1	49.5	46.457
32.7	30.64	0.9	0.2	54.0	41.142
44.0	33.27	4.8	0.9	55.0	43.528
45.0	29.89	6.3	1.1	55.9	40.065
47.0	15.98	3.6	2.0	57.9	34.902
48.6	7.60	2.1	4.7	58.9	33.283
49.8	3.27	0.7	9.8	61.0	31.633
55.0	1.36	0.1	23.3	62.0	31.517
58.7	1.16	0.1	23.8	64.2	32.819
60.3	1.14	0.1	21.0	65.3	34.547
63.7	1.20	0.1	19.8	66.5	36.948
70.5	2.89	0.3	9.8	67.6	39.519
71.0	3.45	0.3	8.0	70.0	42.124
73.7	9.21	0.6	2.4	71.2	41.298
76.3	18.97	0.8	0.9	73.7	26.181
79.0	34.96	1.1	0.5	76.3	1.540
100.0	27.50	0.5	0.1	77.6	7.179
160.0	40.78	0.6	0.1	79.0	12.528
190.0	45.59	0.7	0.1	115.5	1.937
300.0	61.77	1.7	0.1	152.2	0.901
475.0	68.58	5.7	0.1	187.3	0.734
650.0	53.94	1.4	0.1	190.5	0.405
825.0	46.86	1.7	0.1	393.6	0.055
1000.0	42.22	1.9	0.1	595.7	0.502



P.O. Box 350166, Brooklyn, New York 11235-0003 (718) 934-4500 Fax (718) 332-4661 The Design Engineers Search Engine Provides ACTUAL Data Instantly at [minicircuits.com](http://minicircuits.com)

Notes: 1. Performance and quality attributes and conditions not expressly stated in this specification sheet are intended to be excluded and do not form a part of this specification sheet. 2. Electrical specifications and performance data contained herein are based on Mini-Circuit's applicable established test performance criteria and measurement instructions. 3. The parts covered by this specification sheet are subject to Mini-Circuits standard limited warranty and terms and conditions (collectively, "Standard Terms"); Purchasers of this part are entitled to the rights and benefits contained therein. For a full statement of the Standard Terms and the exclusive rights and remedies thereunder, please visit Mini-Circuits' website at [www.minicircuits.com/MCLStore/terms.jsp](http://www.minicircuits.com/MCLStore/terms.jsp).