

Surface Mount Low Pass Filter

SALF-865+ SALF-865

50Ω DC to 865 MHz

Maximum Ratings

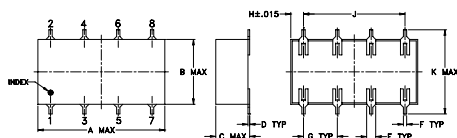
Operating Temperature	-40°C to 85°C
Storage Temperature	-55°C to 100°C
Power Input	0.5W max.

Permanent damage may occur if any of these limits are exceeded.

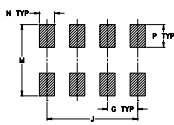
Pin Connections

INPUT	1
OUTPUT	8
GROUND	2,3,4,5,6,7

Outline Drawing



PCB Land Pattern

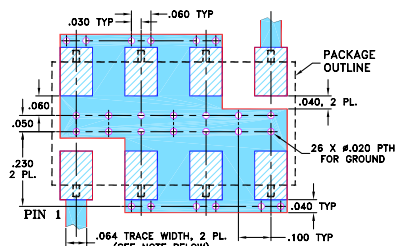


Suggested Layout,
Tolerance to be within ±0.02

Outline Dimensions (inch/mm)

A	B	C	D	E	F	G
.75	.38	.20	.010	.050	.020	.200
19.05	9.65	5.08	0.25	1.27	0.51	5.08
H	J	K	M	N	P	wt
.075	.600	.450	.470	.100	.150	grams
1.91	15.24	11.43	11.94	2.54	3.81	1.6

Demo Board MCL P/N: TB-187+ Suggested PCB Layout (PL-049)



- NOTES: 1. TRACE WIDTH IS SHOWN FOR ROGERS RO4350B WITH DIELECTRIC THICKNESS .030" ± .002"; COPPER: 1/2 OZ. EACH SIDE. FOR OTHER MATERIALS TRACE WIDTH MAY NEED TO BE MODIFIED.
2. BOTTOM SIDE OF THE PCB IS CONTINUOUS GROUND PLANE.
■ DENOTES PCB COPPER LAYOUT WITH SMOBC (SOLDER MASK OVER BARE COPPER)
▨ DENOTES COPPER LAND PATTERN FREE OF SOLDER MASK

Features

- 7-section elliptic function
- excellent rejection

Applications

- defense communications
- receivers/transmitters
- harmonic rejection of VCOs



CASE STYLE: YY101
PRICE: \$6.95 ea. QTY (1-9)

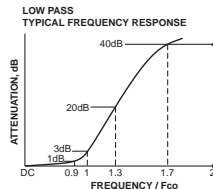
+ RoHS compliant in accordance with EU Directive (2002/95/EC)

The +Suffix identifies RoHS Compliance. See our web site for RoHS Compliance methodologies and qualifications.

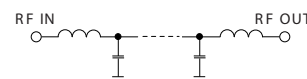
Low Pass Filter Electrical Specifications

PASSBAND (MHz)	f _{co} , (MHz) Nom.	STOPBAND (MHz)		VSWR (:1)	
	(loss < 3 dB) Typ.	(loss > 20 dB) Min.	(loss > 35 dB) Min.	Pass band typ.	Stop band typ.
DC-865	980	1300-1400	1400-2550	1.4	18

typical frequency response



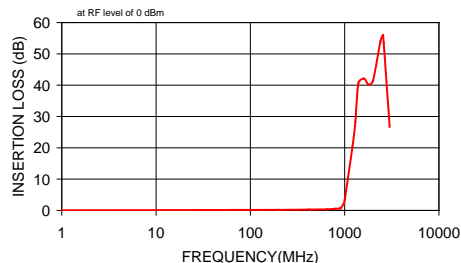
Electrical Schematic



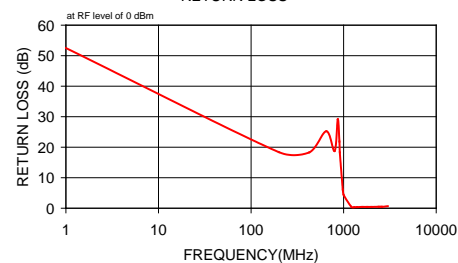
Typical Performance Data

Frequency (MHz)	Insertion Loss (dB)		Return Loss (dB)
	\bar{x}	σ	
1.00	0.02	0.00	52.50
200.00	0.19	0.01	18.38
425.00	0.28	0.01	18.30
650.00	0.35	0.00	25.24
800.00	0.52	0.01	18.75
865.00	0.54	0.01	29.17
900.00	0.66	0.04	21.87
910.00	0.75	0.06	18.31
980.00	2.19	0.25	6.10
1000.00	3.27	0.34	4.39
1210.00	20.21	0.60	0.48
1300.00	28.34	0.76	0.36
1400.00	40.68	1.67	0.37
1600.00	42.12	0.78	0.44
1800.00	40.14	0.36	0.43
2000.00	41.45	0.32	0.43
2400.00	53.98	1.66	0.49
2550.00	56.02	1.99	0.49
2600.00	53.42	1.94	0.47
3000.00	26.74	0.21	0.68

SALF-865 INSERTION LOSS



SALF-865 RETURN LOSS



Mini-Circuits
ISO 9001 ISO 14001 AS 9100 CERTIFIED

P.O. Box 350166, Brooklyn, New York 11235-0003 (718) 934-4500 Fax (718) 332-4661 The Design Engineers Search Engine Provides ACTUAL Data Instantly at minicircuits.com

IF/RF MICROWAVE COMPONENTS

For detailed performance specs & shopping online see web site

Notes: 1. Performance and quality attributes and conditions not expressly stated in this specification sheet are intended to be excluded and do not form a part of this specification sheet. 2. Electrical specifications and performance data contained herein are based on Mini-Circuit's applicable established test performance criteria and measurement instructions. 3. The parts covered by this specification sheet are subject to Mini-Circuits standard limited warranty and terms and conditions (collectively, "Standard Terms"); Purchasers of this part are entitled to the rights and benefits contained therein. For a full statement of the Standard Terms and the exclusive rights and remedies thereunder, please visit Mini-Circuits' website at www.minicircuits.com/MCLStore/terms.jsp.

REV. C
M111708
SALF-865
090820