

# Surface Mount Low Pass Filter

# SALF-325+ SALF-325

50Ω DC to 325 MHz

## Maximum Ratings

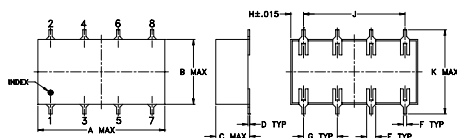
Operating Temperature	-40°C to 85°C
Storage Temperature	-55°C to 100°C
Power Input	0.5W max.

Permanent damage may occur if any of these limits are exceeded.

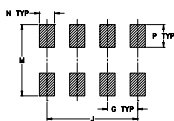
## Pin Connections

INPUT	1
OUTPUT	8
GROUND	2,3,4,5,6,7

## Outline Drawing



### PCB Land Pattern



Suggested Layout,  
Tolerance to be within ±002

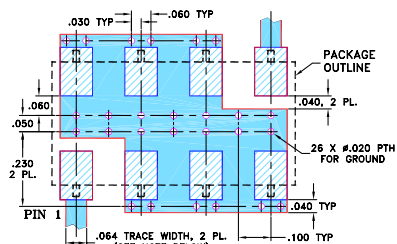
## Outline Dimensions (inch/mm)

A	B	C	D	E	F	G
.75	.38	.20	.010	.050	.200	.200
19.05	9.65	5.08	0.25	1.27	0.51	5.08

H	J	K	M	N	P	wt
.075	.600	.450	.470	.100	.150	grams
1.91	15.24	11.43	11.94	2.54	3.81	1.6

## Demo Board MCL P/N: TB-187+ Suggested PCB Layout (PL-049)



- NOTES: 1. TRACE WIDTH IS SHOWN FOR ROGERS RO4350B WITH DIELECTRIC THICKNESS .030" ± .002"; COPPER: 1/2 OZ. EACH SIDE. FOR OTHER MATERIALS TRACE WIDTH MAY NEED TO BE MODIFIED.  
2. BOTTOM SIDE OF THE PCB IS CONTINUOUS GROUND PLANE.
- DENOTES PCB COPPER LAYOUT WITH SMOBC (SOLDER MASK OVER BARE COPPER)  
 DENOTES COPPER LAND PATTERN FREE OF SOLDER MASK

## Features

- 7-section elliptic function
- excellent rejection

## Applications

- defense communications
- receivers/transmitters
- harmonic rejection of VCOs



CASE STYLE: YY101  
PRICE: \$6.95 ea. QTY (1-9)

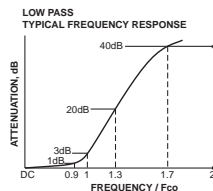
+ RoHS compliant in accordance with EU Directive (2002/95/EC)

The +Suffix identifies RoHS Compliance. See our web site for RoHS Compliance methodologies and qualifications.

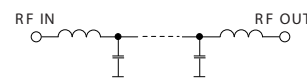
## Low Pass Filter Electrical Specifications

PASSBAND (MHz)	f <sub>co</sub> , (MHz) Nom.	STOPBAND (MHz)		VSWR (:1)	
		(loss > 20 dB) Min.	(loss > 40 dB) Min.	Pass band typ.	Stop band typ.
(loss < 1 dB)	(loss 3 dB) Typ.				
DC-325	383	480-580	580-1250	1.3	18

## typical frequency response



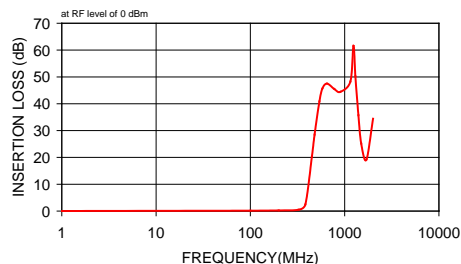
## Electrical Schematic



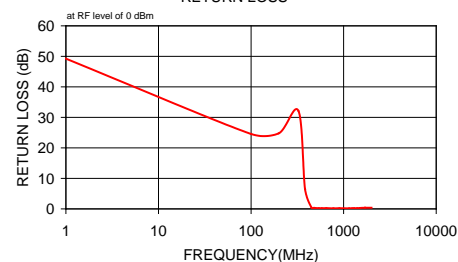
## Typical Performance Data

Frequency (MHz)	Insertion Loss (dB)		Return Loss (dB)
	$\bar{x}$	$\sigma$	
1	0.03	0.00	49.25
100	0.14	0.00	24.56
200	0.25	0.00	24.79
325	0.53	0.01	32.09
383	2.48	0.15	6.52
450	20.40	0.39	0.41
480	28.51	0.42	0.33
540	40.90	0.45	0.23
580	45.61	0.44	0.22
650	47.49	0.43	0.23
775	45.50	0.45	0.18
900	44.43	0.49	0.20
1150	48.25	1.01	0.19
1240	61.59	3.99	0.19
1300	50.26	1.97	0.20
1400	35.73	0.73	0.22
1500	25.20	0.88	0.30
1700	19.14	0.76	0.37
2000	34.41	0.57	0.38

## SALF-325 INSERTION LOSS



## SALF-325 RETURN LOSS



**Mini-Circuits**  
ISO 9001 ISO 14001 AS 9100 CERTIFIED

P.O. Box 350166, Brooklyn, New York 11235-0003 (718) 934-4500 Fax (718) 332-4661 The Design Engineers Search Engine Provides ACTUAL Data Instantly at [minicircuits.com](http://minicircuits.com)

IF/RF MICROWAVE COMPONENTS

For detailed performance specs & shopping online see web site

Notes: 1. Performance and quality attributes and conditions not expressly stated in this specification sheet are intended to be excluded and do not form a part of this specification sheet. 2. Electrical specifications and performance data contained herein are based on Mini-Circuit's applicable established test performance criteria and measurement instructions. 3. The parts covered by this specification sheet are subject to Mini-Circuits standard limited warranty and terms and conditions (collectively, "Standard Terms"); Purchasers of this part are entitled to the rights and benefits contained therein. For a full statement of the Standard Terms and the exclusive rights and remedies thereunder, please visit Mini-Circuits' website at [www.minicircuits.com/MCLStore/terms.jsp](http://www.minicircuits.com/MCLStore/terms.jsp).

REV. C  
M111708  
SALF-325  
090820