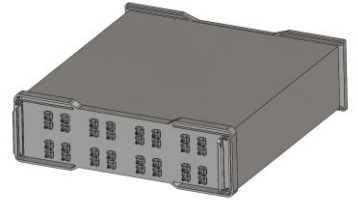


# 16\*16巴特勒矩阵

型号 - SA-07-16B017022 Rev.A

1.7-2.2GHz 16\*16巴特勒矩阵; 同轴连接器封装



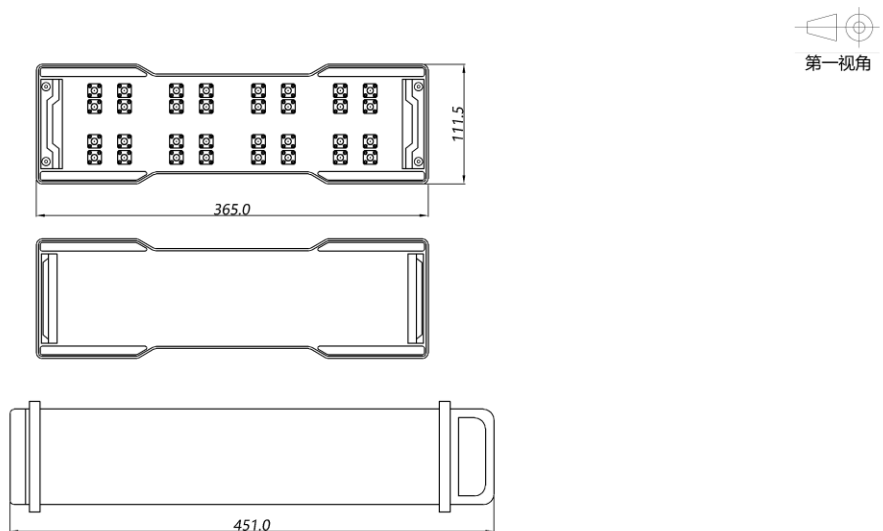
本技术规格书内容变化恕不另行通知

## 机电性能

工作频段	GHz	1.7-2.2	任意100MHz
VSWR	:1 (Max.)	1.4	1.4
插入损耗 <sup>1</sup>	dB(Max.)	15	15
幅度平衡	dB(Max.)	±0.8	±0.6
幅度平坦度	dB(Max.)	±0.8	±0.6
相位精度	Deg. (Max.)	±4	±3
隔离度	dB(Min.)	14	14
功率 <sup>2</sup>	W(Max.)	额定(CW): 5; 峰值(Peak): 500;	
重量	g(Max.)	TBD	外形尺寸 mm 机箱, 高度2U
封装类型	不锈钢同轴接头; 输入端: SMA 阴头 [F], 输出端: SMA 阴头 [F]		
表面处理	丙烯酸漆喷涂		
温度指标	工作: -40~+70°C, 储存: -55~+85°C; 符合SJ 20527A-2003 3.12.1标准c及3.12.2标准c		
环境指标	N/A		
定制要求	N/A		

- 注释
1. 包含理论插损12dB
  2. 额定功率基于单个输入端

## 2D外形图

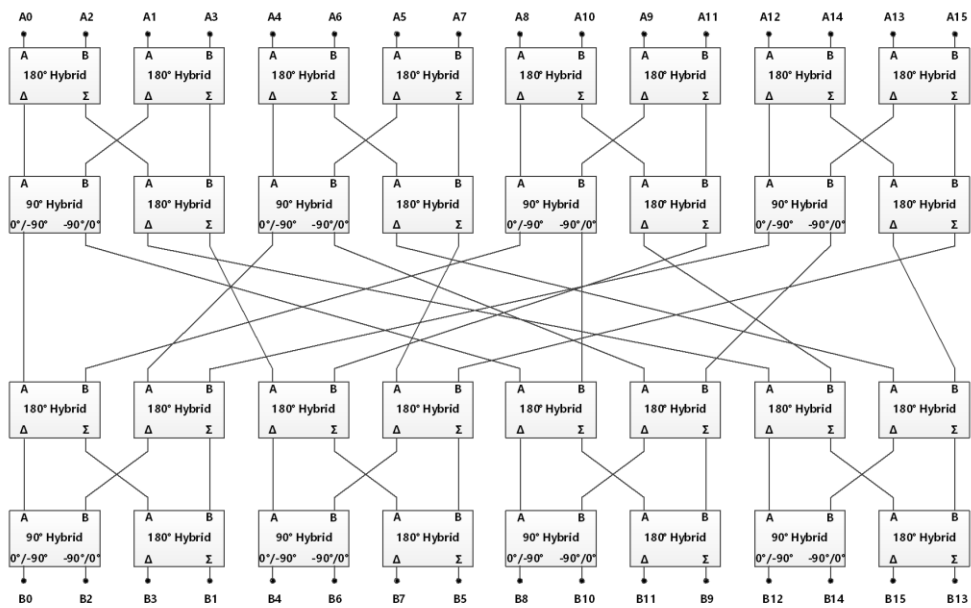


# 16\*16巴特勒矩阵

型号 - SA-07-16B017022 Rev.A

1.7-2.2GHz 16\*16巴特勒矩阵; 同轴连接器封装

拓扑图



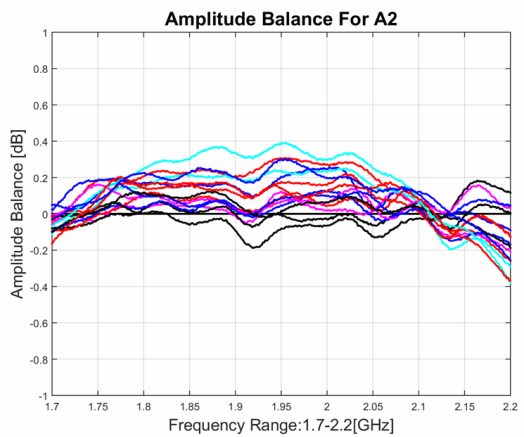
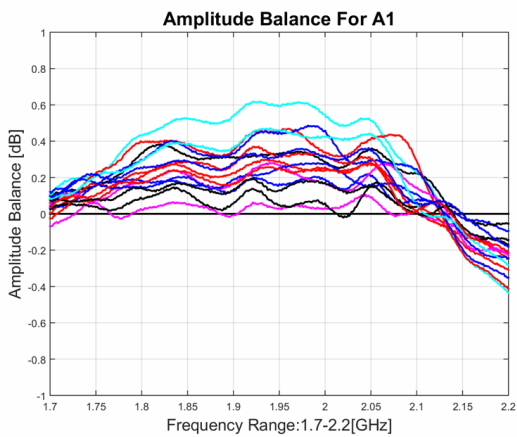
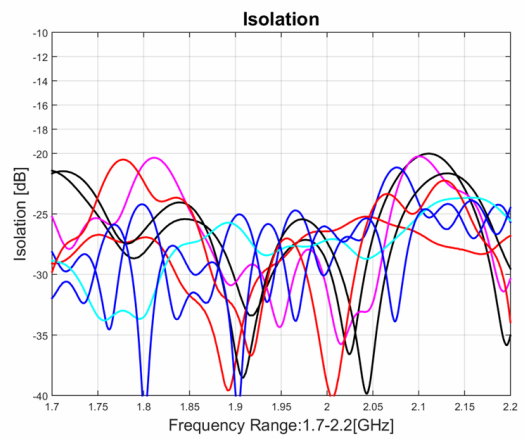
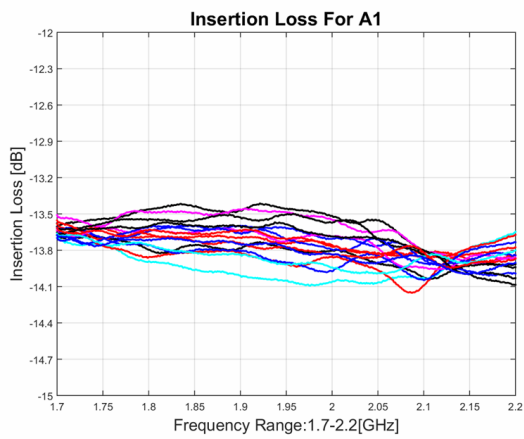
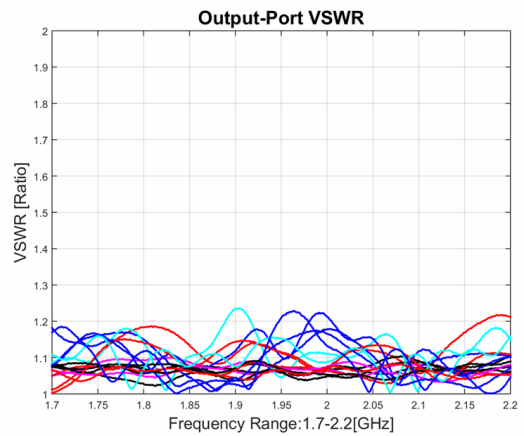
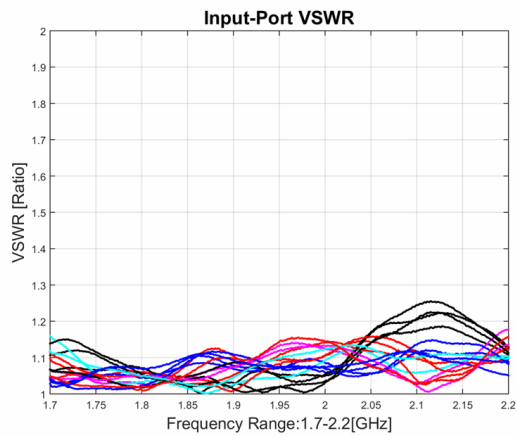
I/O 相位矩阵

Input Output	A0	A1	A2	A3	A4	A5	A6	A7	A8	A9	A10	A11	A12	A13	A14	A15
B0	180	90	0	-90	90	0	-90	180	0	-90	180	90	-90	180	90	0
B1	90	0	-90	180	90	0	-90	180	90	0	-90	180	90	0	-90	180
B2	90	0	-90	180	180	90	0	-90	-90	180	90	0	0	-90	180	90
B3	180	90	0	-90	0	-90	180	90	180	90	0	-90	0	-90	180	90
B4	90	90	90	90	0	0	0	0	-90	-90	-90	-90	180	180	180	180
B5	0	0	0	0	0	0	0	0	0	0	0	0	0	0	0	0
B6	0	0	0	0	90	90	90	90	180	180	180	180	-90	-90	-90	-90
B7	90	90	90	90	-90	-90	-90	-90	90	90	90	90	-90	-90	-90	-90
B8	90	180	-90	0	0	90	180	-90	-90	0	90	180	180	-90	0	90
B9	0	90	180	-90	0	90	180	-90	0	90	180	-90	0	90	180	-90
B10	0	90	180	-90	90	180	-90	0	180	-90	0	90	-90	0	90	180
B11	90	180	-90	0	-90	0	90	180	90	180	-90	0	-90	0	90	180
B12	180	0	180	0	90	-90	90	-90	0	180	0	180	-90	90	-90	90
B13	90	-90	90	-90	90	-90	90	-90	90	-90	90	-90	90	-90	90	-90
B14	90	-90	90	-90	180	0	180	0	-90	90	-90	90	0	180	0	180
B15	180	0	180	0	0	180	0	180	180	0	180	0	0	180	0	180

# 8\*8巴特勒矩阵

型号 - SA-07-16B017022 Rev.A

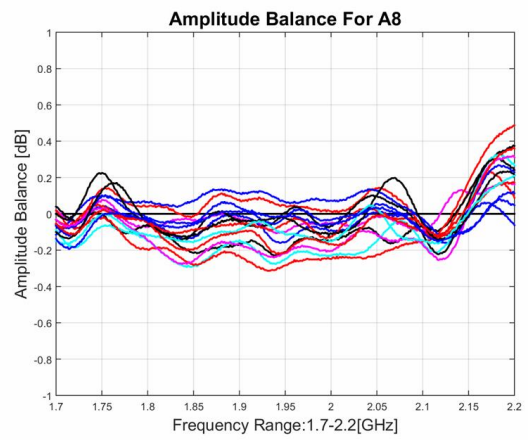
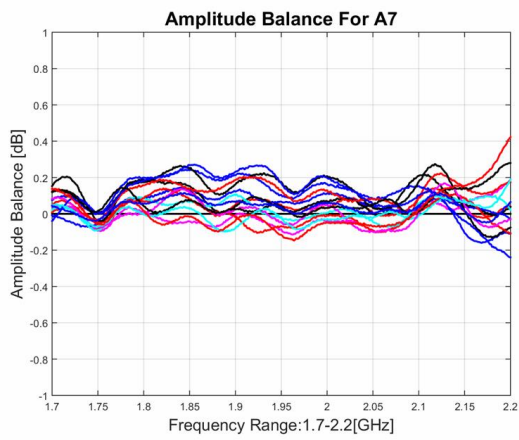
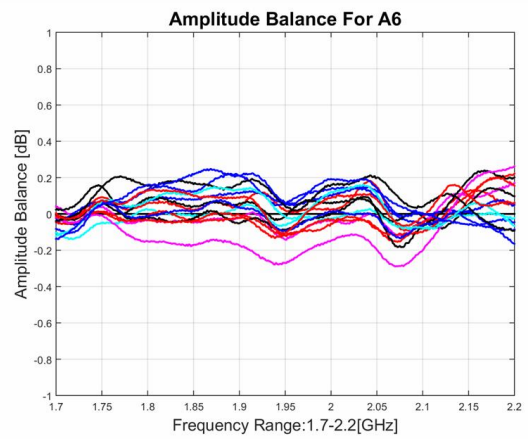
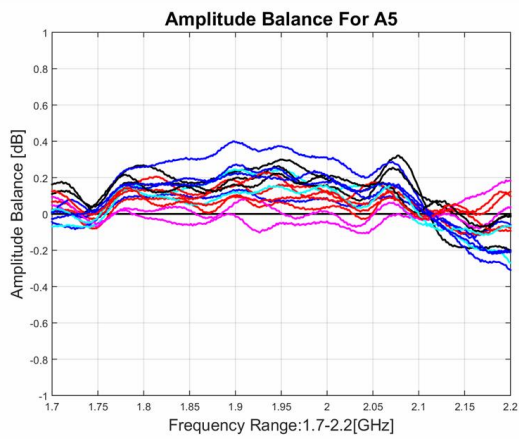
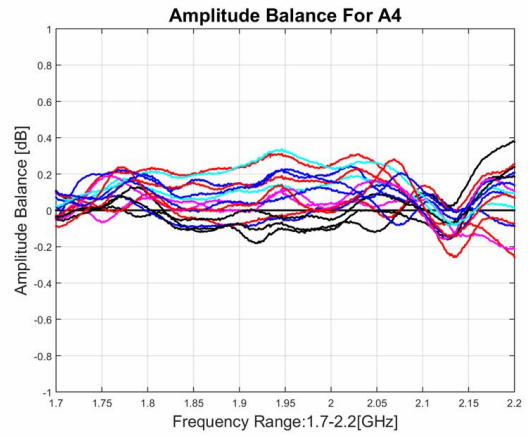
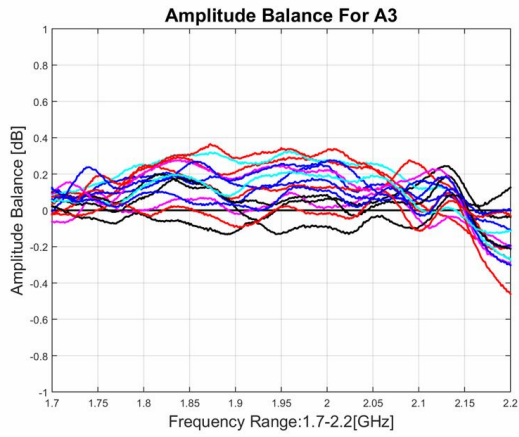
1.7-2.2GHz 16\*16巴特勒矩阵; 同轴连接器封装



# 8\*8巴特勒矩阵

型号 - SA-07-16B017022 Rev.A

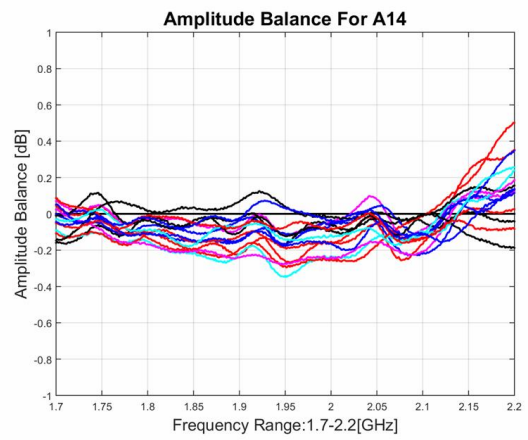
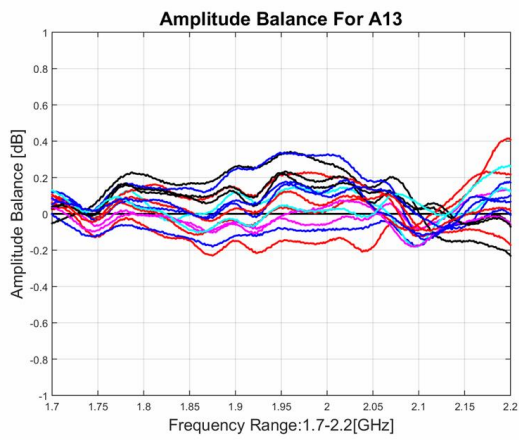
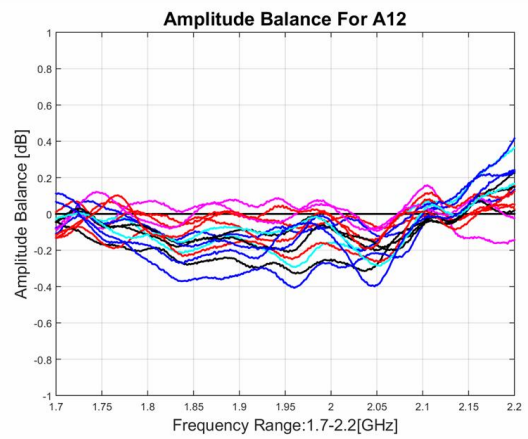
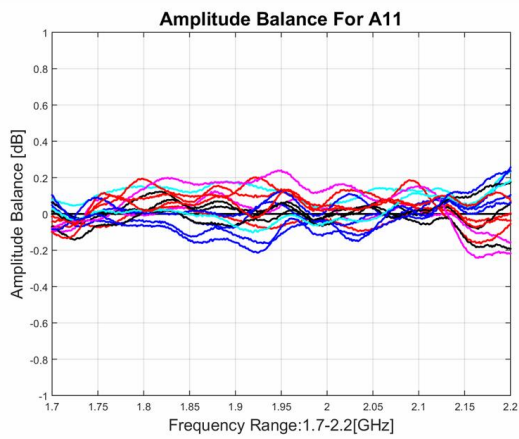
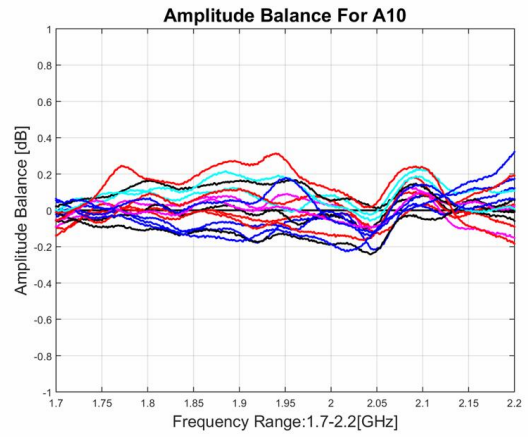
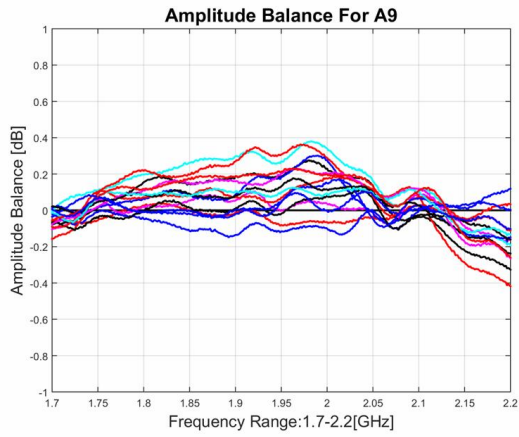
1.7-2.2GHz 16\*16巴特勒矩阵; 同轴连接器封装



# 8\*8巴特勒矩阵

型号 - SA-07-16B017022 Rev.A

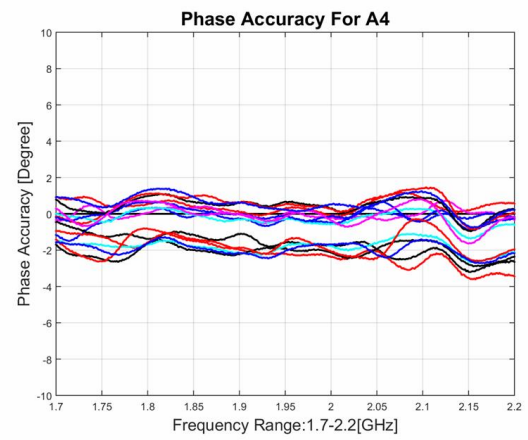
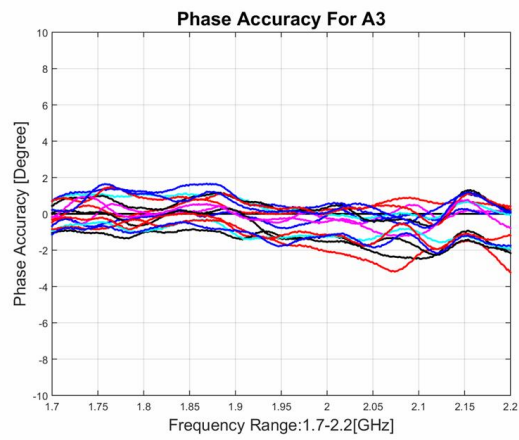
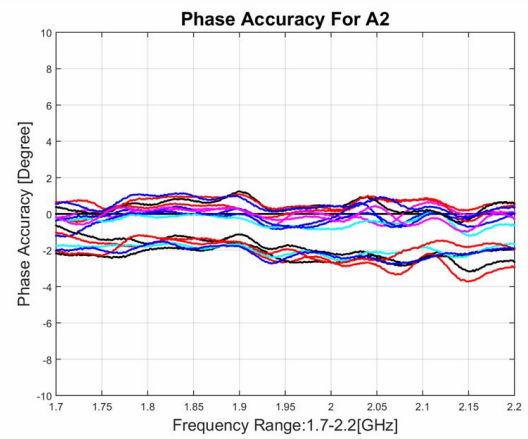
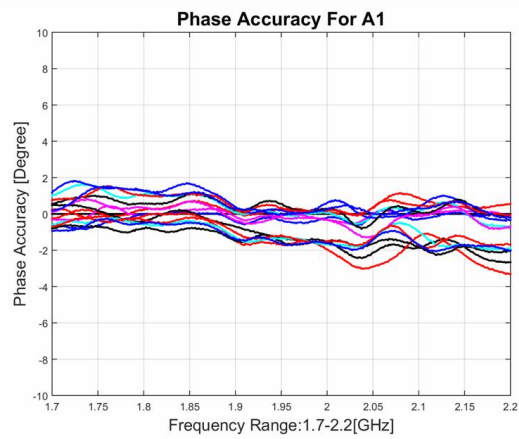
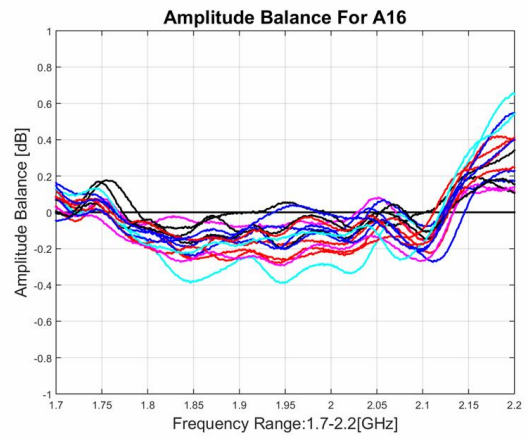
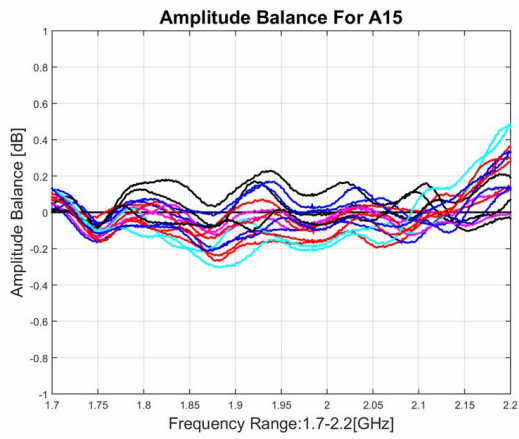
1.7-2.2GHz 16\*16巴特勒矩阵; 同轴连接器封装



# 8\*8巴特勒矩阵

型号 - SA-07-16B017022 Rev.A

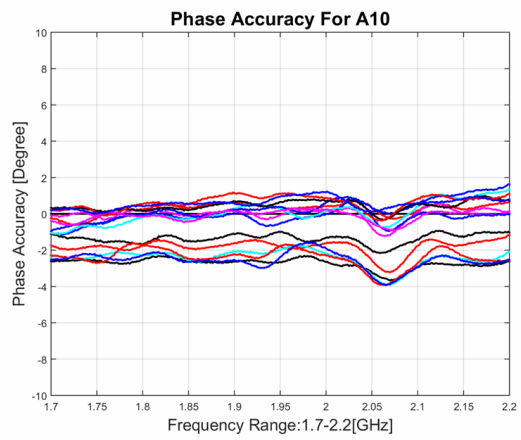
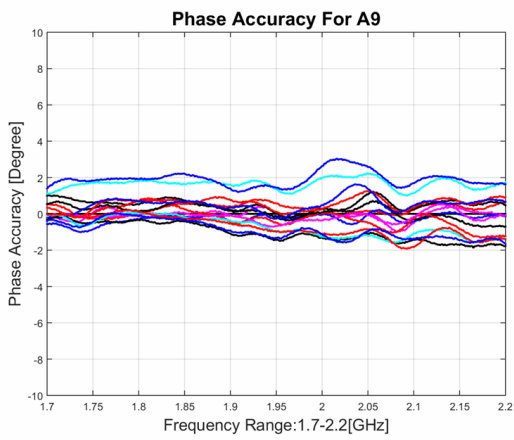
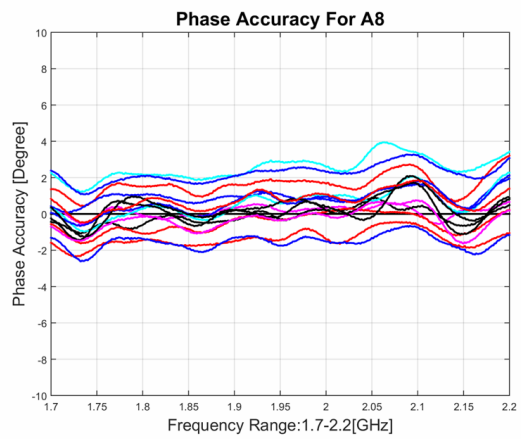
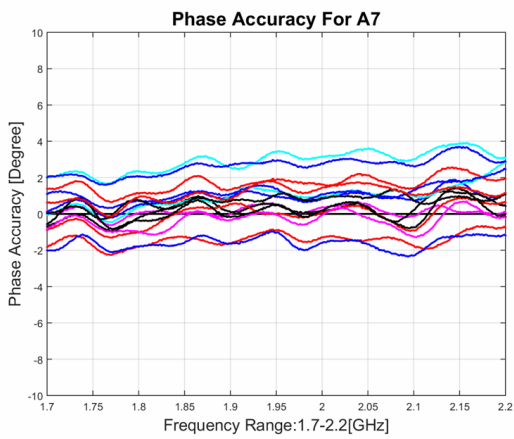
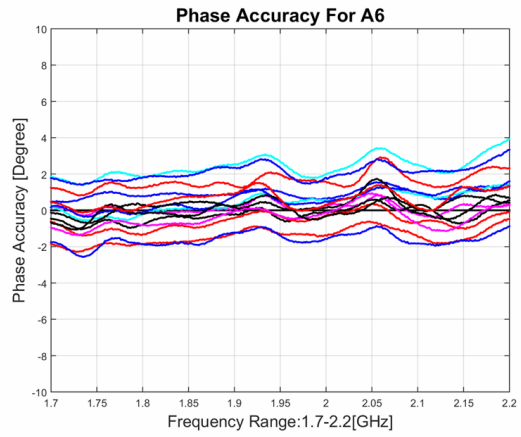
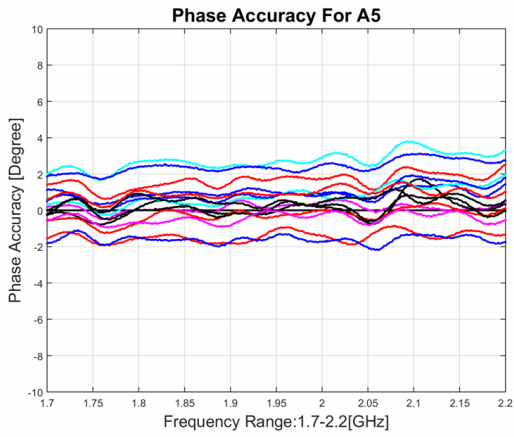
1.7-2.2GHz 16\*16巴特勒矩阵; 同轴连接器封装



# 8\*8巴特勒矩阵

型号 - SA-07-16B017022 Rev.A

1.7-2.2GHz 16\*16巴特勒矩阵; 同轴连接器封装



# 8\*8巴特勒矩阵

型号 - SA-07-16B017022 Rev.A

1.7-2.2GHz 16\*16巴特勒矩阵; 同轴连接器封装

