

# Broad Band Voltage Variable Attenuator

## RVA-3000+

50Ω 20 to 3000 MHz

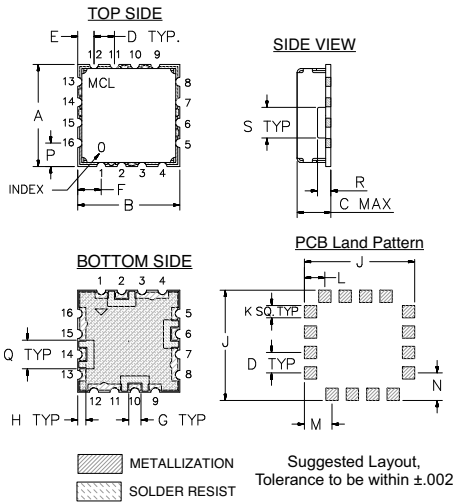
### Maximum Ratings

Operating Temperature	-55°C to 85°C
Storage Temperature	-55°C to 85°C
Absolute Max. Supply Voltage(V+)	12V
Absolute Max. Control Voltage(Vctrl)	20V
Absolute Max. RF Input Level	+26 dBm

### Pin Connections

RF IN	2
RF OUT	10
V CONTROL	6
V+	14
GROUND	1,3,4,5,7,8,9,11,12,13,15,16

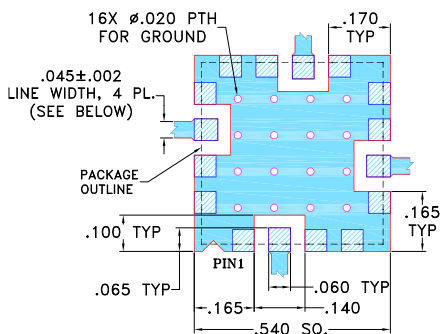
### Outline Drawing



### Outline Dimensions (inch/mm)

A	B	C	D	E	F	G	H	J
.500	.500	.195	.100	.080	.115	.060	.040	.540
12.70	12.70	4.95	2.54	2.03	2.92	1.52	1.02	13.72
K	L	M	N	P	Q	R	S	wt.
.060	.100	.135	.135	.115	.140	.070	.150	grams
1.52	2.54	3.43	3.43	2.92	3.56	1.78	3.81	1.0

### Demo Board MCL P/N: TB-163 Suggested PCB Layout (PL-040)



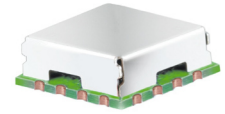
- TRACE WIDTH IS SHOWN FOR FR4 WITH DIELECTRIC THICKNESS 0.025" ± 0.0025"; COPPER: 1/2 OZ. EACH SIDE. FOR OTHER MATERIALS TRACE WIDTH MAY NEED TO BE MODIFIED
  - BOTTOM SIDE OF THE PCB IS CONTINUOUS GROUND PLANE.
- DENOTES PCB COPPER LAYOUT WITH SMOBC (SOLDER MASK OVER BARE COPPER)  
DENOTES COPPER LAND PATTERN FREE OF SOLDER MASK

### Features

- Broadband, 20-3000 MHz, could be used up to 4000MHz
- IP3, +55 dBm typ.
- Good VSWR at IN/OUT ports over attenuation range
- Fast Rise/Fall Time, 5μSec/4μSec Typ.
- Minimal phase deviation over attenuation range
- No external bias and RF matching network required
- Shielded case
- Aqueous washable

### Applications

- Power level control
- Feed forward amplifiers



CASE STYLE: DV874  
PRICE: \$ 11.95 ea. QTY (10-49)

+ RoHS compliant in accordance with EU Directive (2002/95/EC)

The +Suffix has been added in order to identify RoHS Compliance. See our web site for RoHS Compliance methodologies and qualifications.

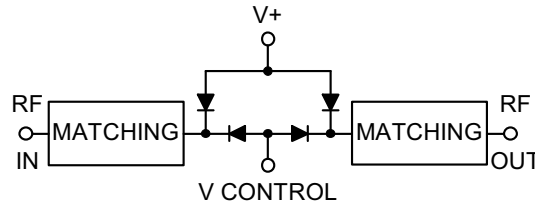
### Electrical Specifications (T<sub>AMB</sub> = 25°C)

FREQ. (MHz)	MIN. INSERTION LOSS, dB (+17V)		MAX. ATTENUATION dB (0V)		INPUT POWER (dBm)	CONTROL Voltage Current (V) (mA)		IP3 (dBm)	RETURN LOSS (dB)	POWER SUPPLY Voltage Current (V) (mA)	
	Min.	Max.	Typ.	Max.		Typ.	Max.			Typ.	Max.
20 - 500	2.8	3.5	56	39	+26	0 - 17	30	48	23	+5	10
500 - 1500	3.0	4.0	40	28	+26	0 - 17	30	56	26	+5	10
1500 - 3000	3.6	5.0	29	22	+26	0 - 17	30	57	21	+5	10

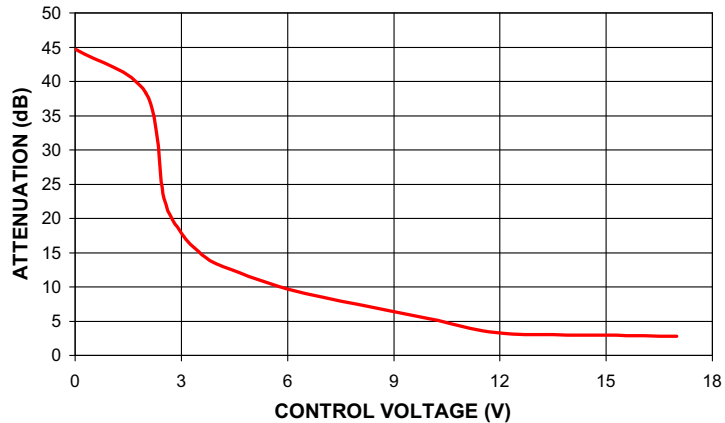
### Notes:

- Rise/Fall time: 5μSec/4μSec Typ.
- Switching Time, turn on/off: 6μSec. Typ.

### Equivalent Schematic



### RVA-3000+ TYPICAL ATTENUATION AT 500 MHz



**Mini-Circuits®**  
ISO 9001 ISO 14001 CERTIFIED

ALL NEW  
minicircuits.com

P.O. Box 350166, Brooklyn, New York 11235-0003 (718) 934-4500 Fax (718) 332-4661 For detailed performance specs & shopping online see Mini-Circuits web site

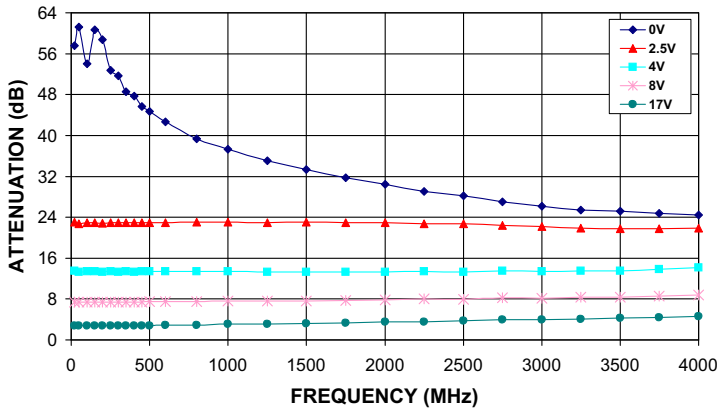


The Design Engineers Search Engine Provides ACTUAL Data Instantly From MINI-CIRCUITS At: [www.minicircuits.com](http://www.minicircuits.com)

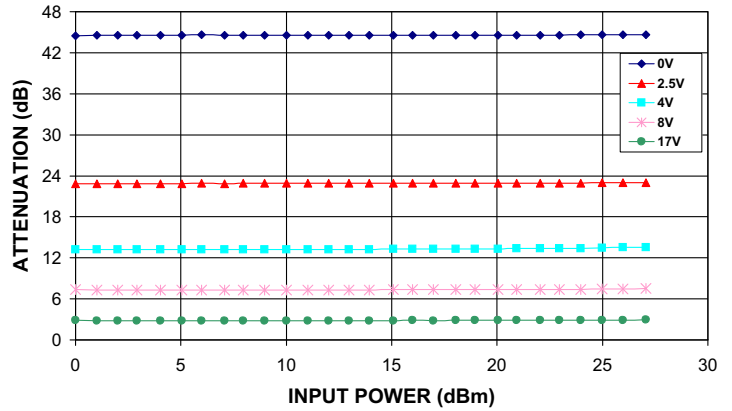
RF/IF MICROWAVE COMPONENTS

REV. OR  
M106828  
EDR-7131/1F1  
RVA-3000+  
RAV  
071202  
Page 1 of 2

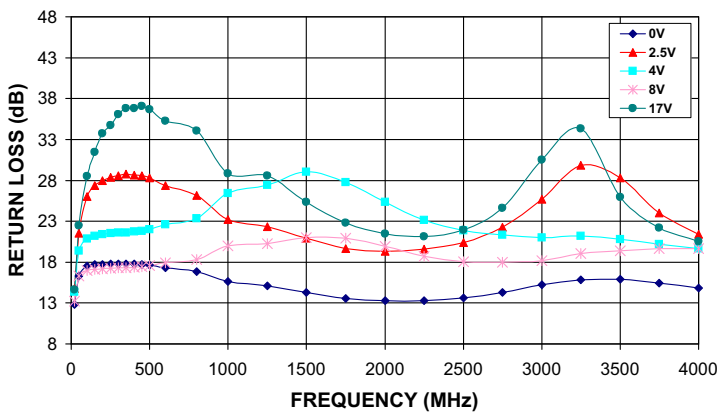
**RVA-3000+**  
ATTENUATION Vs. FREQUENCY  
OVER CONTROL VOLTAGES



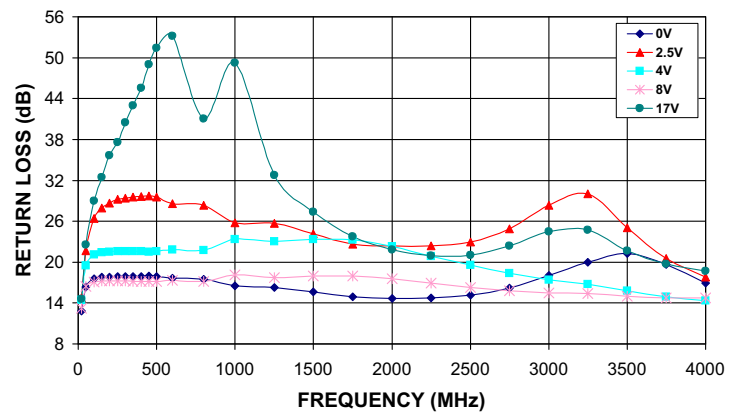
**RVA-3000+**  
ATTENUATION Vs. INPUT POWER  
OVER CONTROL VOLTAGES AT 500MHz



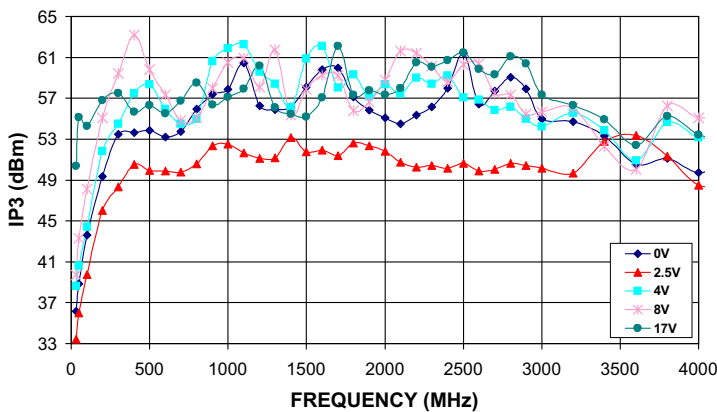
**RVA-3000+**  
INPUT RETURN LOSS Vs. FREQUENCY  
OVER CONTROL VOLTAGES



**RVA-3000+**  
OUTPUT RETURN LOSS Vs. FREQUENCY  
OVER CONTROL VOLTAGES



**RVA-3000+**  
IP3 Vs. FREQUENCY  
OVER CONTROL VOLTAGES



**RVA-3000+**  
PHASE SHIFT Vs. FREQUENCY  
OVER CONTROL VOLTAGES

