

# Surface Mount Frequency Mixer

## RMS-30+ RMS-30

Level 7 (LO Power +7 dBm) 200 to 3000 MHz



### Maximum Ratings

Operating Temperature	-40°C to 85°C
Storage Temperature	-55°C to 100°C
RF Power	200mW
IF Current	40mA

Permanent damage may occur if any of these limits are exceeded.

### Pin Connections

LO	1
RF	4
IF	5
GROUND	2,3,6

### Features

- wideband, 200-3000 MHz
- conversion loss, 7.0 dB typ.
- small size, 0.25"x0.31"x0.2"

### Applications

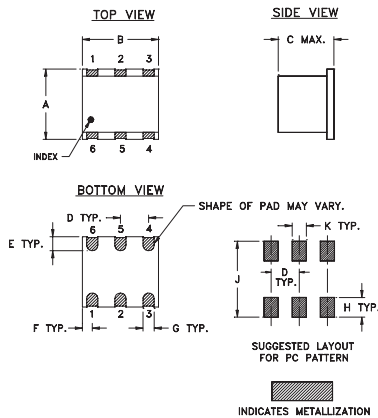
- MMDS
- ISM/PCS/UMTS
- GPS

CASE STYLE: TT240  
PRICE: \$8.95 ea. QTY (1-9)

**+ RoHS compliant in accordance with EU Directive (2002/95/EC)**

The +Suffix identifies RoHS Compliance. See our web site for RoHS Compliance methodologies and qualifications.

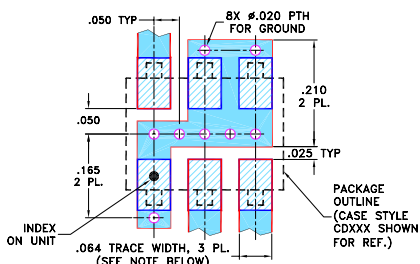
### Outline Drawing



### Outline Dimensions (inch/mm)

A	B	C	D	E	F
.250	.31	.20	.100	.050	.055
6.35	7.87	5.08	2.54	1.27	1.40
G	H	J	K	wt	
.040	.070	.270	.050	grams	
1.02	1.78	6.86	1.27	0.50	

### Demo Board MCL P/N: TB-03 Suggested PCB Layout (PL-052)



- NOTES:
1. TRACE WIDTH IS SHOWN FOR ROGERS RO4350B WITH DIELECTRIC THICKNESS .030" ± .002"; COPPER: 1/2 OZ. EACH SIDE. FOR OTHER MATERIALS TRACE WIDTH MAY NEED TO BE MODIFIED.
  2. BOTTOM SIDE OF THE PCB IS CONTINUOUS GROUND PLANE.
- DENOTES PCB COPPER LAYOUT WITH SMOBC (SOLDER MASK OVER BARE COPPER)
  - DENOTES COPPER LAND PATTERN FREE OF SOLDER MASK

### Electrical Specifications

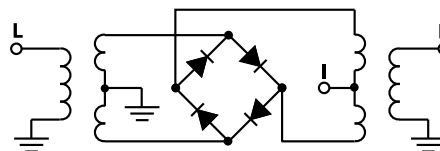
FREQUENCY (MHz)	CONVERSION LOSS (dB)	LO-RF ISOLATION (dB)		LO-IF ISOLATION (dB)		IP3 at center band (dBm)				
		Typ.	Min.	Typ.	Min.					
200-3000	DC-1000	6.5	.20	9.0	9.8	27	17	20	7	11

1 dB COMP.: +1 dBm typ.  
For phase detection, DC output positive with in-phase RF & LO.

### Typical Performance Data

Frequency (MHz)	Conversion Loss (dB)	Isolation L-R (dB)	Isolation L-I (dB)	VSWR RF Port (:1)	VSWR LO Port (:1)	
						RF
200.10	230.10	5.30	35.34	22.95	1.59	6.06
400.10	430.10	4.94	45.55	22.74	1.63	3.34
600.09	630.09	4.68	38.09	24.23	1.75	2.59
828.65	858.65	6.27	32.57	30.75	1.81	2.05
1000.07	1030.07	6.43	30.53	30.13	2.20	1.49
1114.35	1144.35	6.16	30.64	23.50	2.56	1.38
1228.63	1258.63	5.88	29.50	21.69	3.00	1.34
1342.92	1372.92	6.03	30.63	23.23	3.60	1.47
1457.20	1487.20	6.87	30.80	25.21	4.40	1.62
1500.00	1530.00	6.95	31.01	25.49	4.81	1.75
1685.76	1655.76	7.08	30.14	20.62	5.49	2.12
1857.18	1827.18	7.22	28.52	16.49	3.82	2.51
1971.47	1941.47	7.26	27.20	14.81	3.19	2.75
2085.75	2055.75	7.12	26.56	13.64	2.97	2.86
2200.03	2170.03	6.95	26.14	12.33	2.76	2.94
2371.45	2341.45	6.77	24.57	11.40	2.44	2.95
2542.87	2512.87	6.62	25.24	13.33	1.85	2.94
2714.30	2684.30	5.98	26.06	14.42	1.35	2.45
2885.72	2855.72	6.24	26.86	14.79	1.60	1.83
3000.00	2970.00	6.95	28.42	16.91	2.52	1.60

### Electrical Schematic



**Mini-Circuits®**  
ISO 9001 ISO 14001 AS 9100 CERTIFIED

For detailed performance specs & shopping online see web site

P.O. Box 350166, Brooklyn, New York 11235-0003 (718) 934-4500 Fax (718) 332-4661 The Design Engineers Search Engine Provides ACTUAL Data Instantly at [minicircuits.com](http://minicircuits.com)

IF/RF MICROWAVE COMPONENTS

Notes: 1. Performance and quality attributes and conditions not expressly stated in this specification sheet are intended to be excluded and do not form a part of this specification sheet. 2. Electrical specifications and performance data contained herein are based on Mini-Circuit's applicable established test performance criteria and measurement instructions. 3. The parts covered by this specification sheet are subject to Mini-Circuit's standard limited warranty and terms and conditions (collectively, "Standard Terms"); Purchasers of this part are entitled to the rights and benefits contained therein. For a full statement of the Standard Terms and the exclusive rights and remedies thereunder, please visit Mini-Circuit's website at [www.minicircuits.com/MCLStore/terms.jsp](http://www.minicircuits.com/MCLStore/terms.jsp).

REV. B  
M102713  
RMS-30  
100427  
Page 1 of 2

