

Low Pass Filter

RLP-83+

50Ω DC to 83 MHz

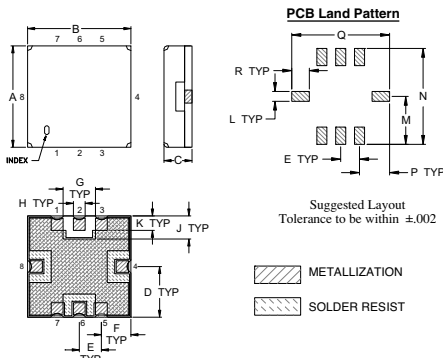
Maximum Ratings

Operating Temperature	-40°C to 85°C
Storage Temperature	-55°C to 100°C
RF Power Input	0.5W Max

Pin Connections

RF IN	2
RF OUT	6
GROUND	1, 3, 4, 5, 7, 8

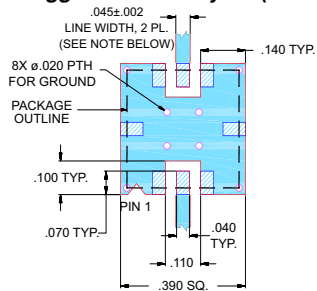
Outline Drawing



Outline Dimensions (inch/mm)

A	B	C	D	E	F	G	H	J
.350	.350	.100	.175	.075	.100	.110	.040	.080
8.89	8.89	2.54	4.45	1.93	2.54	2.79	1.02	2.03
K	L	M	N	P	Q	R	wt.	
.050	.040	.195	.390	.120	.390	.070	grams	
1.27	1.02	4.95	9.91	3.05	9.91	1.78	0.25	

Demo Board MCL P/N: TB-332 Suggested PCB Layout (PL-176)



- NOTES: 1. TRACE WIDTH IS SHOWN FOR FR4 WITH DIELECTRIC THICKNESS .025" ± .002"; COPPER: 1/2 OZ. EACH SIDE.. FOR OTHER MATERIALS TRACE WIDTH MAY NEED TO BE MODIFIED.
2. BOTTOM SIDE OF THE PCB IS CONTINUOUS GROUND PLANE.
- DENOTES PCB COPPER LAYOUT WITH SMOBC (SOLDER MASK OVER BARE COPPER)
 - DENOTES COPPER LAND PATTERN FREE OF SOLDER MASK

Features

- High rejection
- Sharp Insertion Loss roll off
- Excellent VSWR, 1.1:1 typ. @ Passband
- Aqueous washable

Applications

- Wireless communications
- Receivers / Transmitters



CASE STYLE: GP731
PRICE: \$7.95 ea. QTY (10-49)

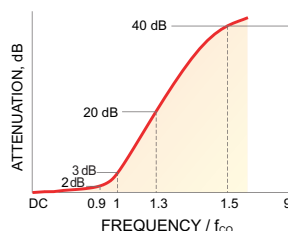
+ RoHS compliant in accordance with EU Directive (2002/95/EC)

The +Suffix has been added in order to identify RoHS Compliance. See our web site for RoHS Compliance methodologies and qualifications.

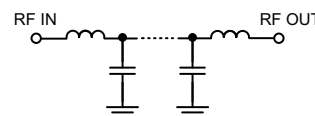
Low Pass Filter Electrical Specifications (T_{AMB} = 25°C)

PASSBAND (MHz)	f _{co} , MHz Nom.	STOPBAND (MHz)		VSWR (:1)	
		(Loss > 20dB)	(Loss > 40dB)	Passband Typ.	Stopband Typ.
DC - 83	93	118 - 135	135 - 850	1.1	20

Typical Frequency Response

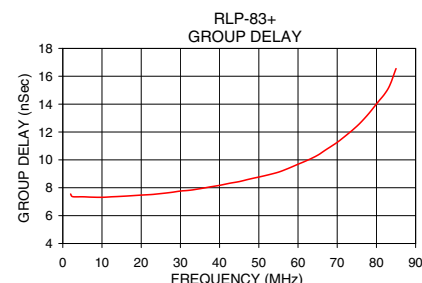
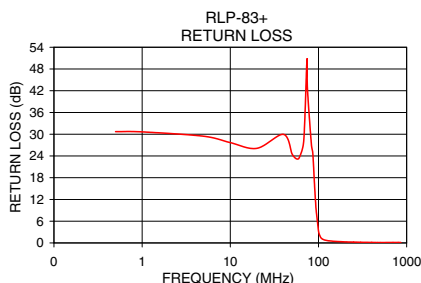
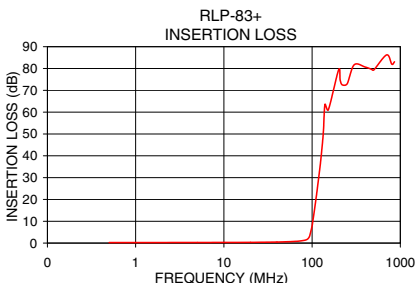


Functional Schematic



Typical Performance Data at 25°C

Frequency (MHz)	Insertion Loss (dB)		Return Loss (dB)	Frequency (MHz)	Group Delay (nSec)
	\bar{x}	σ			
0.5	0.25	0.01	30.72	2.0	7.55
40.0	0.47	0.01	29.97	5.0	7.35
60.0	0.72	0.01	23.36	10.0	7.32
83.0	1.32	0.03	27.35	15.0	7.39
90.0	2.02	0.10	16.65	20.0	7.48
93.0	2.86	0.20	10.79	25.0	7.58
94.0	3.29	0.25	9.20	30.0	7.77
100.0	7.87	0.50	3.32	35.0	7.93
102.0	10.02	0.55	2.45	40.0	8.17
110.0	19.47	0.58	1.12	45.0	8.44
115.0	25.43	0.59	0.88	50.0	8.77
118.0	28.99	0.60	0.79	55.0	9.12
135.0	52.69	1.14	0.55	60.0	9.69
200.0	79.43	6.12	0.29	65.0	10.33
300.0	81.71	4.23	0.18	70.0	11.26
500.0	79.32	3.65	0.11	75.0	12.41
800.0	82.01	5.38	0.13	83.0	15.12
850.0	82.92	5.63	0.12	85.0	16.55



P.O. Box 350166, Brooklyn, New York 11235-0003 (718) 934-4500 Fax (718) 332-4661 For detailed performance specs & shopping online see Mini-Circuits web site



The Design Engineers Search Engine Provides ACTUAL Data Instantly From MINI-CIRCUITS At: www.minicircuits.com

RF/IF MICROWAVE COMPONENTS

REV. OR
M112722
EDR-8673U
RLP-83+
URJ/RAV
071023
Page 1 of 1