

Low Pass Filter

RLP-50+

50Ω DC to 50 MHz

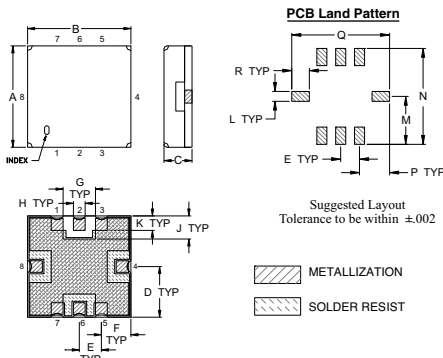
Maximum Ratings

Operating Temperature	-40°C to 85°C
Storage Temperature	-55°C to 100°C
RF Power Input	0.5W Max

Pin Connections

RF IN	2
RF OUT	6
GROUND	1, 3, 4, 5, 7, 8

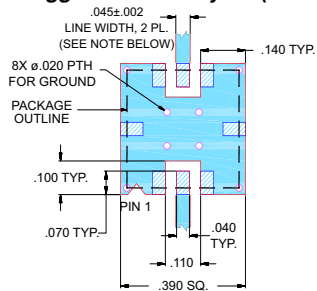
Outline Drawing



Outline Dimensions (inch/mm)

A	B	C	D	E	F	G	H	J
.350	.350	.100	.175	.075	.100	.110	.040	.080
8.89	8.89	2.54	4.45	1.93	2.54	2.79	1.02	2.03
K	L	M	N	P	Q	R	wt.	
.050	.040	.195	.390	.120	.390	.070	grams	
1.27	1.02	4.95	9.91	3.05	9.91	1.78	0.25	

Demo Board MCL P/N: TB-332 Suggested PCB Layout (PL-176)



- NOTES: 1. TRACE WIDTH IS SHOWN FOR FR4 WITH DIELECTRIC THICKNESS .025" ± .002"; COPPER: 1/2 OZ. EACH SIDE.
FOR OTHER MATERIALS TRACE WIDTH MAY NEED TO BE MODIFIED.
2. BOTTOM SIDE OF THE PCB IS CONTINUOUS GROUND PLANE.
- DENOTES PCB COPPER LAYOUT WITH SMOBC (SOLDER MASK OVER BARE COPPER)
 - DENOTES COPPER LAND PATTERN FREE OF SOLDER MASK

Features

- High rejection
- Sharp Insertion Loss roll off
- Excellent VSWR, 1.1:1 typ. @ Passband
- Aqueous washable

Applications

- Wireless communications
- Receivers / Transmitters



CASE STYLE: GP731
PRICE: \$7.95 ea. QTY (10-49)

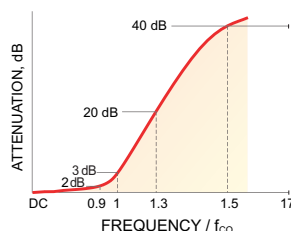
+ RoHS compliant in accordance with EU Directive (2002/95/EC)

The +Suffix has been added in order to identify RoHS Compliance. See our web site for RoHS Compliance methodologies and qualifications.

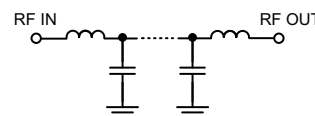
Low Pass Filter Electrical Specifications (T_{AMB} = 25°C)

PASSBAND (MHz)	f _{co} , MHz Nom.	STOPBAND (MHz)		VSWR (:1)	
		(Loss > 20dB)	(Loss > 40dB)	Passband Typ.	Stopband Typ.
DC - 50	59	78 - 91	91 - 1000	1.1	20

Typical Frequency Response

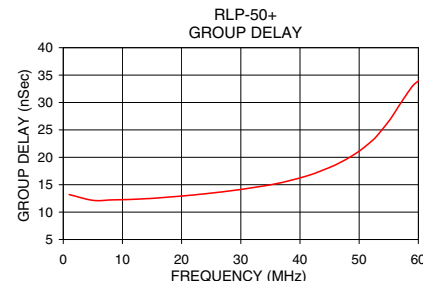
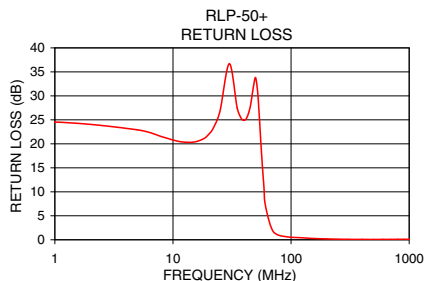
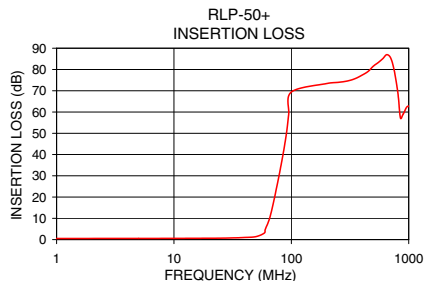


Functional Schematic



Typical Performance Data at 25°C

Frequency (MHz)	Insertion Loss (dB)		Return Loss (dB)	Frequency (MHz)	Group Delay (nSec)
	\bar{x}	σ			
0.5	0.52	0.01	24.56	1.0	13.19
20.0	0.64	0.01	21.92	5.0	12.14
40.0	1.00	0.01	24.90	8.0	12.22
50.0	1.40	0.01	33.82	10.0	12.27
56.0	2.06	0.04	18.72	12.0	12.34
59.0	3.06	0.10	10.79	18.0	12.76
61.0	5.48	0.16	7.02	20.0	12.94
65.0	9.55	0.23	3.96	22.0	13.13
70.0	16.59	0.31	1.86	25.0	13.46
75.0	24.42	0.33	1.18	30.0	14.13
78.0	29.07	0.34	0.99	35.0	14.98
91.0	49.88	0.47	0.63	38.0	15.67
97.0	63.18	0.81	0.54	40.0	16.23
100.0	69.26	0.80	0.51	45.0	18.14
200.0	75.27	1.16	0.17	50.0	21.12
400.0	78.87	0.99	0.08	53.0	23.91
700.0	86.84	1.87	0.08	56.0	28.15
1000.0	62.27	0.31	0.10	60.0	33.92



P.O. Box 350166, Brooklyn, New York 11235-0003 (718) 934-4500 Fax (718) 332-4661 For detailed performance specs & shopping online see Mini-Circuits web site



The Design Engineers Search Engine Provides ACTUAL Data Instantly From MINI-CIRCUITS At: www.minicircuits.com

RF/IF MICROWAVE COMPONENTS

REV. OR
M112722
EDR-8671U
RLP-50+
URJ/RAV
071129
Page 1 of 1