

Low Pass Filter

RLP-216+

50Ω DC to 216 MHz

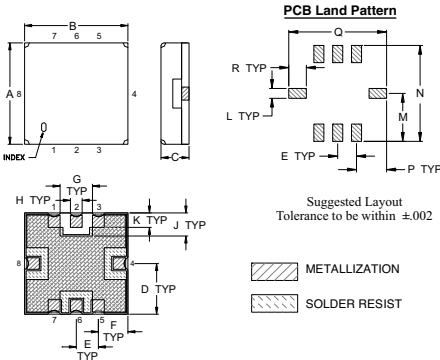
Maximum Ratings

Operating Temperature	-40°C to 85°C
Storage Temperature	-55°C to 100°C
RF Power Input	0.5W Max

Pin Connections

RF IN	2
RF OUT	6
GROUND	1, 3, 4, 5, 7, 8

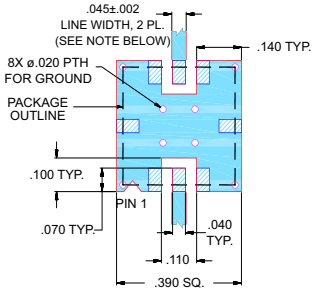
Outline Drawing



Outline Dimensions (inch/mm)

A	B	C	D	E	F	G	H	J
.350	.350	.100	.175	.075	.100	.110	.040	.080
8.89	8.89	2.54	4.45	1.93	2.54	2.79	1.02	2.03
K	L	M	N	P	Q	R	wt.	
.050	.040	.195	.390	.120	.390	.070	grams	
1.27	1.02	4.95	9.91	3.05	9.91	1.78		0.25

Demo Board MCL P/N: TB-332 Suggested PCB Layout (PL-176)



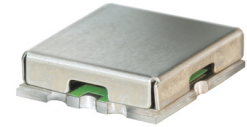
- NOTES: 1. TRACE WIDTH IS SHOWN FOR FR4 WITH DIELECTRIC THICKNESS .025" ± .002"; COPPER: 1/2 OZ. EACH SIDE.. FOR OTHER MATERIALS TRACE WIDTH MAY NEED TO BE MODIFIED.
2. BOTTOM SIDE OF THE PCB IS CONTINUOUS GROUND PLANE.
- DENOTES PCB COPPER LAYOUT WITH SMOBC (SOLDER MASK OVER BARE COPPER)
 - DENOTES COPPER LAND PATTERN FREE OF SOLDER MASK

Features

- High rejection
- Sharp Insertion Loss roll off
- Excellent VSWR, 1.1:1 typ.@ Passband
- Aqueous washable

Applications

- Wireless communications
- Receivers / Transmitters



CASE STYLE: GP731
PRICE: \$7.95 ea. QTY (10-49)

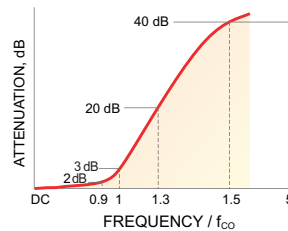
+ RoHS compliant in accordance with EU Directive (2002/95/EC)

The +Suffix has been added in order to identify RoHS Compliance. See our web site for RoHS Compliance methodologies and qualifications.

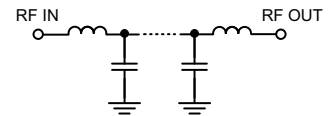
Low Pass Filter Electrical Specifications (T_{AMB} = 25°C)

PASSBAND (MHz)	f _{co} , MHz Nom.	STOPBAND (MHz)		VSWR (:1)	
		(Loss > 20dB)	(Loss > 40dB)	Passband Typ.	Stopband Typ.
DC - 216	232	295 - 340	340 - 1300	1.1	20

Typical Frequency Response

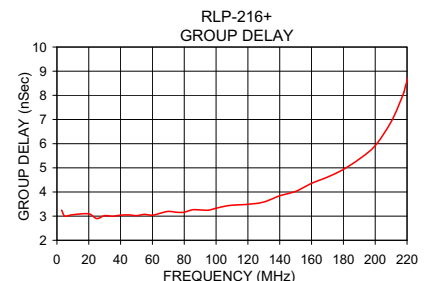
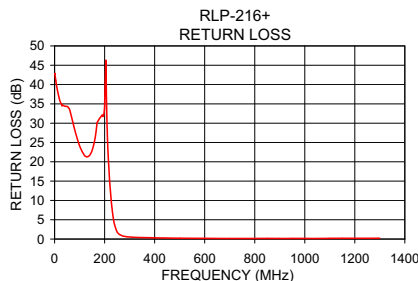
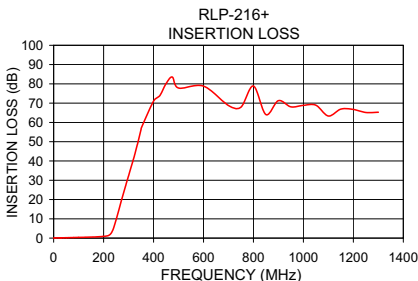


Functional Schematic



Typical Performance Data at 25°C

Frequency (MHz)	Insertion Loss (dB)		Return Loss (dB)	Frequency (MHz)	Group Delay (nSec)
	\bar{x}	σ			
0.5	0.05	0.01	42.75	3.0	3.25
50.0	0.20	0.00	34.32	5.0	3.00
100.0	0.37	0.00	24.10	10.0	3.06
200.0	0.89	0.01	34.46	25.0	2.90
216.0	1.22	0.04	19.35	40.0	3.04
220.0	1.43	0.07	15.08	55.0	3.07
227.0	2.14	0.15	9.51	70.0	3.20
232.0	3.06	0.22	6.64	85.0	3.26
239.0	5.09	0.33	3.90	100.0	3.33
252.0	10.54	0.41	1.63	120.0	3.49
274.0	20.77	0.41	0.76	130.0	3.59
295.0	30.10	0.41	0.56	150.0	4.02
340.0	50.42	0.67	0.40	160.0	4.36
400.0	80.53	5.62	0.32	170.0	4.62
500.0	75.90	6.34	0.22	190.0	5.37
800.0	74.72	3.28	0.15	210.0	6.91
1000.0	69.23	2.91	0.17	216.0	7.79
1300.0	67.62	3.20	0.21	220.0	8.59



P.O. Box 350166, Brooklyn, New York 11235-0003 (718) 934-4500 Fax (718) 332-4661 For detailed performance specs & shopping online see Mini-Circuits web site



The Design Engineers Search Engine Provides ACTUAL Data Instantly From MINI-CIRCUITS At: www.minicircuits.com

RF/IF MICROWAVE COMPONENTS

REV. OR
M112722
EDR-8679U
RLP-216+
URJ/RAV
071025
Page 1 of 1