

Low Pass Filter

RLP-120+

50Ω DC to 120 MHz

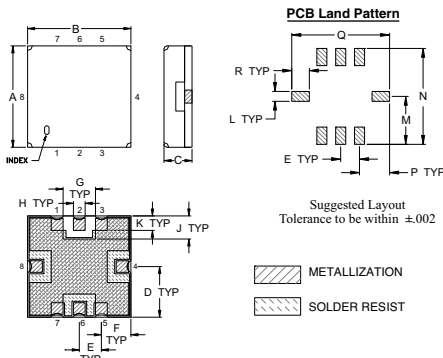
Maximum Ratings

Operating Temperature	-40°C to 85°C
Storage Temperature	-55°C to 100°C
RF Power Input	0.5W Max

Pin Connections

RF IN	2
RF OUT	6
GROUND	1, 3, 4, 5, 7, 8

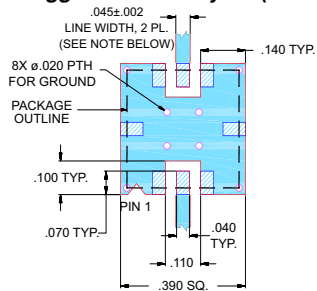
Outline Drawing



Outline Dimensions (inch/mm)

A	B	C	D	E	F	G	H	J
.350	.350	.100	.175	.075	.100	.110	.040	.080
8.89	8.89	2.54	4.45	1.93	2.54	2.79	1.02	2.03
K	L	M	N	P	Q	R	wt.	
.050	.040	.195	.390	.120	.390	.070	grams	
1.27	1.02	4.95	9.91	3.05	9.91	1.78	0.25	

Demo Board MCL P/N: TB-332 Suggested PCB Layout (PL-176)



- NOTES: 1. TRACE WIDTH IS SHOWN FOR FR4 WITH DIELECTRIC THICKNESS .025" ± .002"; COPPER: 1/2 OZ. EACH SIDE.
FOR OTHER MATERIALS TRACE WIDTH MAY NEED TO BE MODIFIED.
2. BOTTOM SIDE OF THE PCB IS CONTINUOUS GROUND PLANE.
- DENOTES PCB COPPER LAYOUT WITH SMOBC (SOLDER MASK OVER BARE COPPER)
 - DENOTES COPPER LAND PATTERN FREE OF SOLDER MASK

Features

- High rejection
- Sharp Insertion Loss roll off
- Excellent VSWR, 1.1:1 typ. @ Passband
- Aqueous washable

Applications

- Wireless communications
- Receivers / Transmitters



CASE STYLE: GP731
PRICE: \$7.95 ea. QTY (10-49)

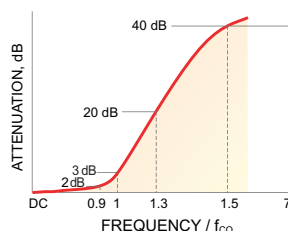
+ RoHS compliant in accordance with EU Directive (2002/95/EC)

The +Suffix has been added in order to identify RoHS Compliance. See our web site for RoHS Compliance methodologies and qualifications.

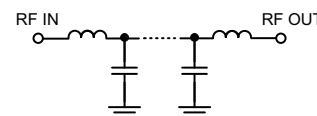
Low Pass Filter Electrical Specifications (T_{AMB} = 25°C)

PASSBAND (MHz)	f _{co} , MHz Nom.	STOPBAND (MHz)		VSWR (:1)	
		(Loss > 20dB)	(Loss > 40dB)	Passband Typ.	Stopband Typ.
DC - 120	132	170 - 205	205 - 1000	1.1	20

Typical Frequency Response

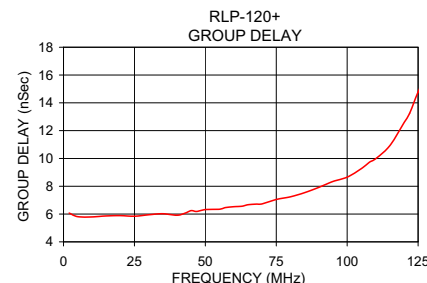
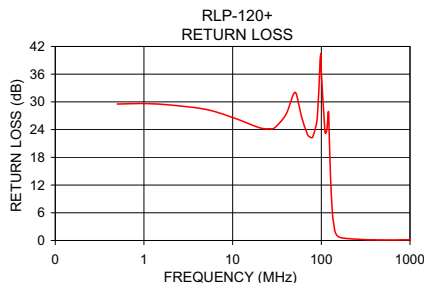
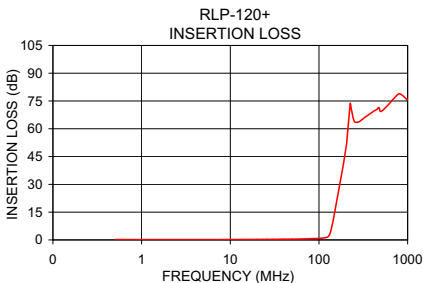


Functional Schematic



Typical Performance Data at 25°C

Frequency (MHz)	Insertion Loss (dB)		Return Loss (dB)	Frequency (MHz)	Group Delay (nSec)
	\bar{x}	σ			
0.5	0.20	0.07	29.54	2.0	6.07
50.0	0.41	0.07	32.03	5.0	5.81
80.0	0.65	0.07	22.39	10.0	5.80
100.0	0.82	0.07	36.60	20.0	5.89
120.0	1.27	0.08	27.95	25.0	5.85
128.0	1.98	0.11	12.31	45.0	6.25
132.0	2.99	0.19	7.34	50.0	6.32
135.0	4.25	0.27	4.91	55.0	6.35
142.0	8.65	0.38	2.09	60.0	6.53
150.0	14.69	0.40	1.10	65.0	6.67
160.0	22.03	0.40	0.74	70.0	6.73
170.0	28.86	0.40	0.60	75.0	7.05
180.0	35.38	0.43	0.49	80.0	7.24
205.0	52.34	0.80	0.39	90.0	7.92
300.0	64.61	0.74	0.20	100.0	8.66
500.0	69.37	2.02	0.12	110.0	9.97
800.0	78.88	8.13	0.13	120.0	12.56
1000.0	75.79	5.98	0.17	125.0	14.78



P.O. Box 350166, Brooklyn, New York 11235-0003 (718) 934-4500 Fax (718) 332-4661 For detailed performance specs & shopping online see Mini-Circuits web site



The Design Engineers Search Engine Provides ACTUAL Data Instantly From MINI-CIRCUITS At: www.minicircuits.com

RF/IF MICROWAVE COMPONENTS

REV. OR
M112722
EDR-8675U
RLP-120+
URJ/RAV
071025
Page 1 of 1