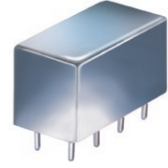


X2 Frequency Multiplier

50Ω Output 20 to 1600 MHz

RK-5+
RK-5



CASE STYLE: A01
PRICE: \$55.70 ea. QTY (1-9)

Maximum Ratings

Operating Temperature	-55°C to 100°C
Storage Temperature	-55°C to 100°C
RF Input Power	200mW

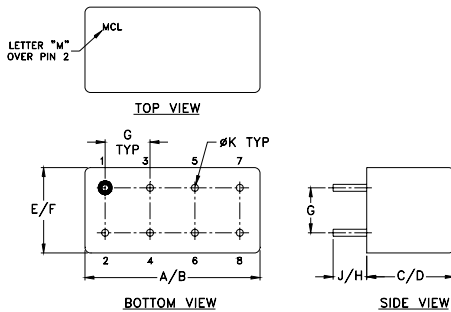
Permanent damage may occur if any of these limits are exceeded.

Pin Connections

INPUT	1,3,4 [^]
OUTPUT	8
GROUND	2,5,6,7
CASE GROUND	2,5,6,7

[^] pins must be connected together externally

Outline Drawing



Outline Dimensions (Inch/mm)

A	B	C	D	E	F
.770	.800	.385	.400	.370	.400
19.56	20.32	9.78	10.16	9.40	10.16
G	H	J	K		wt
.200	.20	.14	.031		grams
5.08	5.08	3.56	0.79		5.2

Features

- wideband, 20 to 1600 MHz
- low conversion loss, 12.5 dB typ.
- hermetic case

Applications

- synthesizers
- local oscillators
- military, hi-rel applications

+ RoHS compliant in accordance with EU Directive (2002/95/EC)

The +Suffix identifies RoHS Compliance. See our web site for RoHS Compliance methodologies and qualifications.

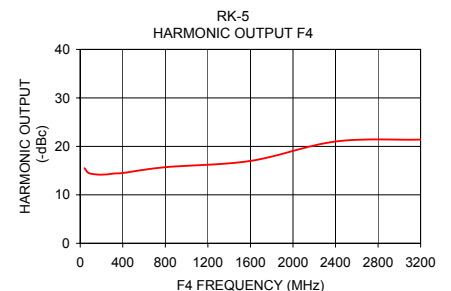
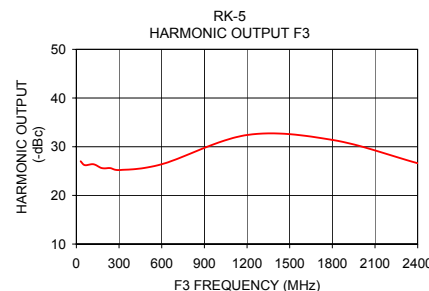
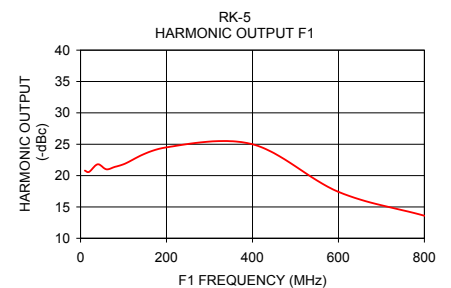
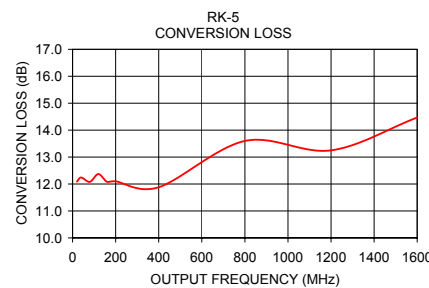
Electrical Specifications

MULTIPLICATION FACTOR	FREQUENCY (MHz)		INPUT POWER (dBm)		CONVERSION LOSS (dB)		*HARMONIC OUTPUT (dBc)					
	F1 Input	F2 Output	Min.	Max.	Typ.	Max.	F1		F3		F4	
2	10-100	20-200	10	20	13.0	15.0	20	12	25	20	15	12
	100-400	200-800	10	20	12.5	16.0	20	12	30	20	15	12
	400-800	800-1600	10	20	13.0	16.0	20	12	25	18	15	10

* Harmonics of input frequency below the power level of F2

Typical Performance Data

Input Frequency (MHz)	Conversion Loss (dB) F2	F1	F3	F4
10.00	12.09	20.80	27.00	15.50
20.00	12.24	20.60	26.20	14.50
40.00	12.08	21.80	26.40	14.20
60.00	12.37	21.00	25.60	14.20
80.00	12.08	21.40	25.60	14.40
100.00	12.10	21.80	25.20	14.50
200.00	11.88	24.50	26.40	15.70
400.00	13.60	25.00	32.40	17.00
600.00	13.25	17.40	31.40	21.00
800.00	14.47	13.60	26.60	21.40



Mini-Circuits
ISO 9001 ISO 14001 AS 9100 CERTIFIED
IF/RF MICROWAVE COMPONENTS

For detailed performance specs & shopping online see web site

P.O. Box 350166, Brooklyn, New York 11235-0003 (718) 934-4500 Fax (718) 332-4661 The Design Engineers Search Engine Provides ACTUAL Data Instantly at minicircuits.com

Notes: 1. Performance and quality attributes and conditions not expressly stated in this specification sheet are intended to be excluded and do not form a part of this specification sheet. 2. Electrical specifications and performance data contained herein are based on Mini-Circuit's applicable established test performance criteria and measurement instructions. 3. The parts covered by this specification sheet are subject to Mini-Circuits standard limited warranty and terms and conditions (collectively, "Standard Terms"); Purchasers of this part are entitled to the rights and benefits contained therein. For a full statement of the Standard Terms and the exclusive rights and remedies thereunder, please visit Mini-Circuits' website at www.minicircuits.com/MCLStore/terms.jsp.

REV. B
M126372
RK-5
AD/CP/AM
100215