

High Pass Filter

RHP-44+

50Ω 95 to 2400 MHz

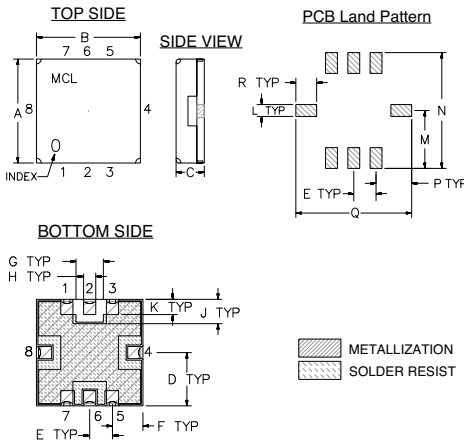
Maximum Ratings

Operating Temperature	-40°C to 85°C
Storage Temperature	-55°C to 100°C
RF Power Input	0.5W at 25°C

Pin Connections

INPUT	2
OUTPUT	6
GROUND	1, 3, 4, 5, 7, 8

Outline Drawing

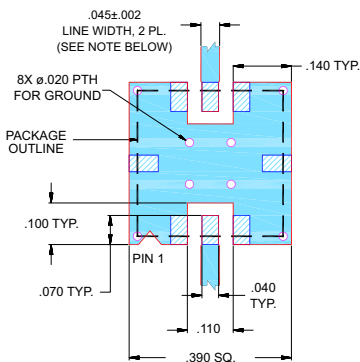


Outline Dimensions (inch/mm)

A	B	C	D	E	F	G	H	J
.350	.350	.100	.175	.075	.100	.090	.040	.080
8.89	8.89	2.54	4.45	1.93	2.54	2.29	1.02	2.03

K	L	M	N	P	Q	R	wt.
.050	.040	.195	.390	.120	.390	.070	grams
1.27	1.02	4.95	9.91	3.05	9.91	1.78	0.25

Demo Board MCL P/N: TB-332
Suggested PCB Layout (PL-176)



NOTES:
1. TRACE WIDTH IS SHOWN FOR FR4 WITH DIELECTRIC THICKNESS .025 ± .002"; COPPER: 1/2 OZ. EACH SIDE. FOR OTHER MATERIALS TRACE WIDTH MAY NEED TO BE MODIFIED.
2. BOTTOM SIDE OF THE PCB IS CONTINUOUS GROUND PLANE.

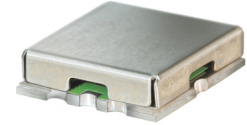
■ DENOTES PCB COPPER LAYOUT WITH SMOBC (SOLDER MASK OVER BARE COPPER)
■ DENOTES COPPER LAND PATTERN FREE OF SOLDER MASK

Features

- Low Insertion Loss, 0.3dB Typ @ Passband
- High Rejection
- Shielded case
- Aqueous washable

Applications

- Transmitters/Receivers
- Sub-Harmonic Rejection
- Military communications



CASE STYLE: GP731
PRICE: \$13.95 ea. QTY (1-9)

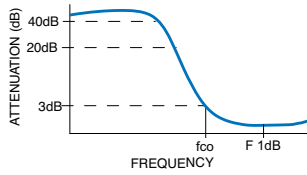
+ RoHS compliant in accordance with EU Directive (2002/95/EC)

The +Suffix has been added in order to identify RoHS Compliance. See our web site for RoHS Compliance methodologies and qualifications.

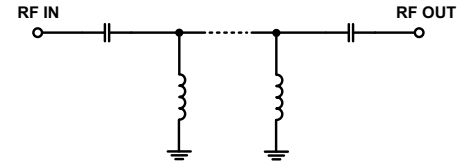
High Pass Filter Electrical Specifications (T_{AMB} = 25°C)

STOPBAND (MHz)		f _{co} , MHz Nom.	PASSBAND (MHz)	VSWR (:1)	
(Loss > 40dB)	(Loss > 20dB)	(Loss 3dB)	(Loss < 1dB)	Stopband Typ.	Passband Typ.
DC - 25	DC - 32	44	95 - 2400	18	1.2

Typical Frequency Response

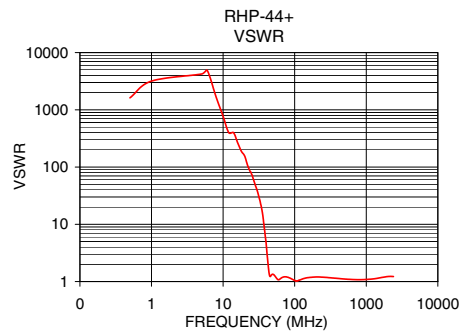
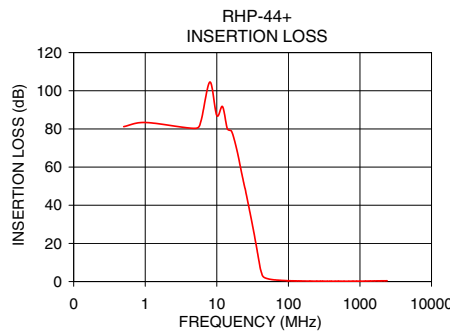


Functional Schematic



Typical Performance Data at 25°C

Frequency (MHz)	Insertion Loss (dB)	VSWR (:1)
0.5	81.20	1622.17
20.0	65.37	156.73
25.0	48.35	74.66
32.0	28.28	28.60
44.0	2.82	1.38
80.0	0.63	1.19
95.0	0.49	1.08
100.0	0.45	1.05
120.0	0.37	1.07
150.0	0.31	1.17
200.0	0.26	1.20
300.0	0.21	1.17
400.0	0.19	1.13
500.0	0.20	1.11
1000.0	0.23	1.09
1600.0	0.33	1.17
2000.0	0.39	1.22
2400.0	0.43	1.23



P.O. Box 350166, Brooklyn, New York 11235-0003 (718) 934-4500 Fax (718) 332-4661 For detailed performance specs & shopping online see Mini-Circuits web site



The Design Engineers Search Engine Provides ACTUAL Data Instantly From MINI-CIRCUITS At: www.minicircuits.com

RF/IF MICROWAVE COMPONENTS

REV. OR
M114801
EDR-8686U
RHP-44+
URJ/RAV
071204
Page 1 of 1